

**Model 2600**  
**Hillside Leveling System**  
**Parts Manual**

SN 2600-1043 thru 2600-1047

D-060928ADL01A







**2600 Leveling System**  
for 2166 and 2366 CASE-IH Combines

**TABLE OF CONTENTS**

<b>1 GENERAL INFORMATION</b> .....	<b>1-3</b>
Serial Number Location.....	1-3
Text Format and Illustrations.....	1-3
Abbreviations.....	1-3
Right and Left Identification.....	1-3
Parts Orders.....	1-3
<b>2 TRANSITION</b> .....	<b>2-1</b>
Radial Pin Slip Clutch and Header Lift Cylinder Extensions.....	2-3
Transition Fasteners.....	2-5
<b>3 CARRIAGE</b> .....	<b>3-1</b>
<b>4 Y-BRACE</b> .....	<b>4-1</b>
<b>5 DROP AXLE</b> .....	<b>5-1</b>
<b>6 LADDER</b> .....	<b>6-1</b>
<b>7 ELECTRICAL BOX</b> .....	<b>7-1</b>
Connectors.....	7-3
Electrical Cables.....	7-5
<b>8 HYDRAULICS</b> .....	<b>8-1</b>
Hydraulic Manifold.....	8-3
Hydraulic Hoses.....	8-5
Hydraulic Hoses (Continued).....	8-6
Hydraulic Adapters.....	8-7
<b>9 MISCELLANEOUS</b> .....	<b>9-8</b>
<b>10 PART NUMBER INDEX</b> .....	<b>10-1</b>
Part Number Index (Continued).....	10-2

Model 2600 Hillco Leveling System  
For Serial Numbers 2600-1043 thru 2600-1047

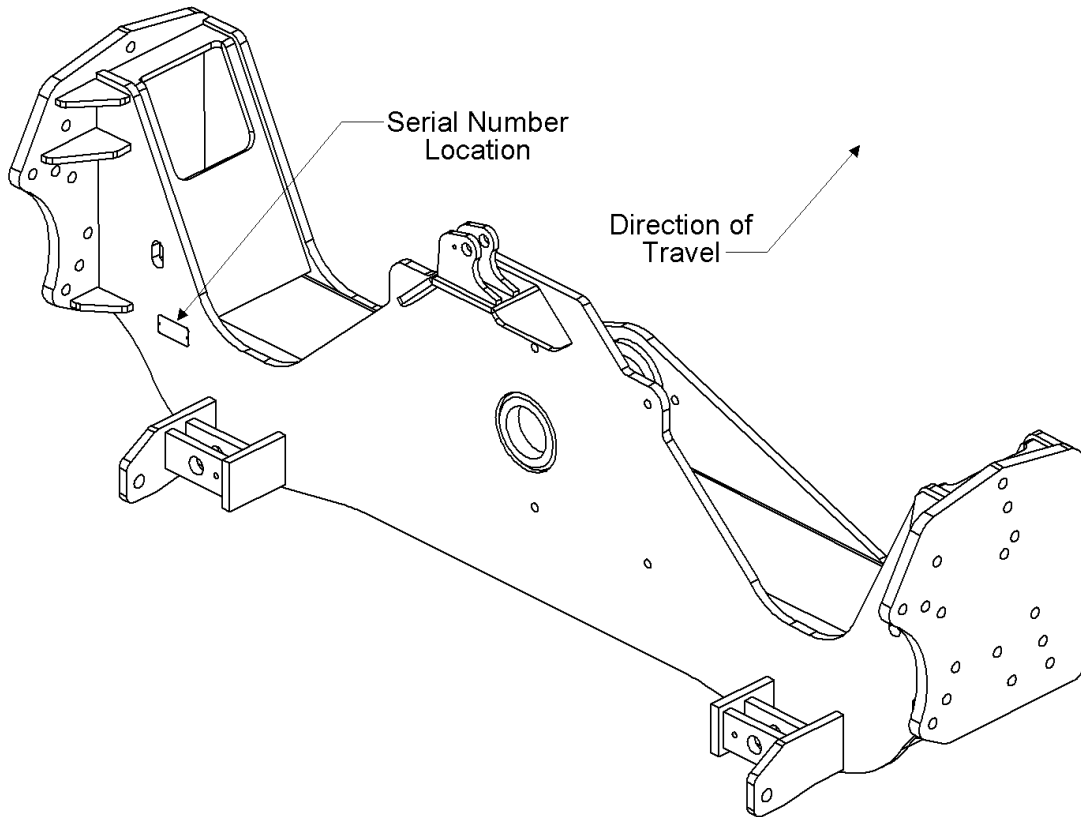
Hillco Technologies, Inc.  
107 1<sup>st</sup> Avenue  
Nezperce Id. 83543

Fax	208.937.2280
Phone	208.937.2461
Toll Free	800.937.2461

[www.hillcotechnologies.com](http://www.hillcotechnologies.com)

## 1 GENERAL INFORMATION

### SERIAL NUMBER LOCATION



### TEXT FORMAT AND ILLUSTRATIONS

The arrangement of this parts catalog is for easy identification of parts. All parts are illustrated in exploded views in proper relation to each other. Some diagrams refer to other pages for further information. Reference numbers used in the illustrations refer to line numbers in the part lists. The part lists appear to the right of all diagrams and correspond with those diagrams. Included in the part lists, along with the reference numbers are part numbers, part descriptions and the quantity of the part required per leveling system.

### ABBREVIATIONS

**SN** "Serial Number" refers to the serial number given to each leveling system (by Hillco Technologies), as well as the serial number given to the combine (by the specific combine manufacturer) the leveling system is installed upon. This abbreviation is used interchangeably in both instances. Each model 2600 Leveling System uses the following serial number format: 2600-XXXX (sequential numbers).

**ASM** "Assembly" refers to a whole grouping of parts (usually shown in the diagram corresponding with the page where "ASM" is shown unless otherwise noted). Some assemblies have parts that are sold separately, however some must be purchased as a single unit. Hillco Product Specialists will be able to assist you with any questions.

**NS** "Not Shown" refers to a part that is not depicted in the illustration.

### RIGHT AND LEFT IDENTIFICATION

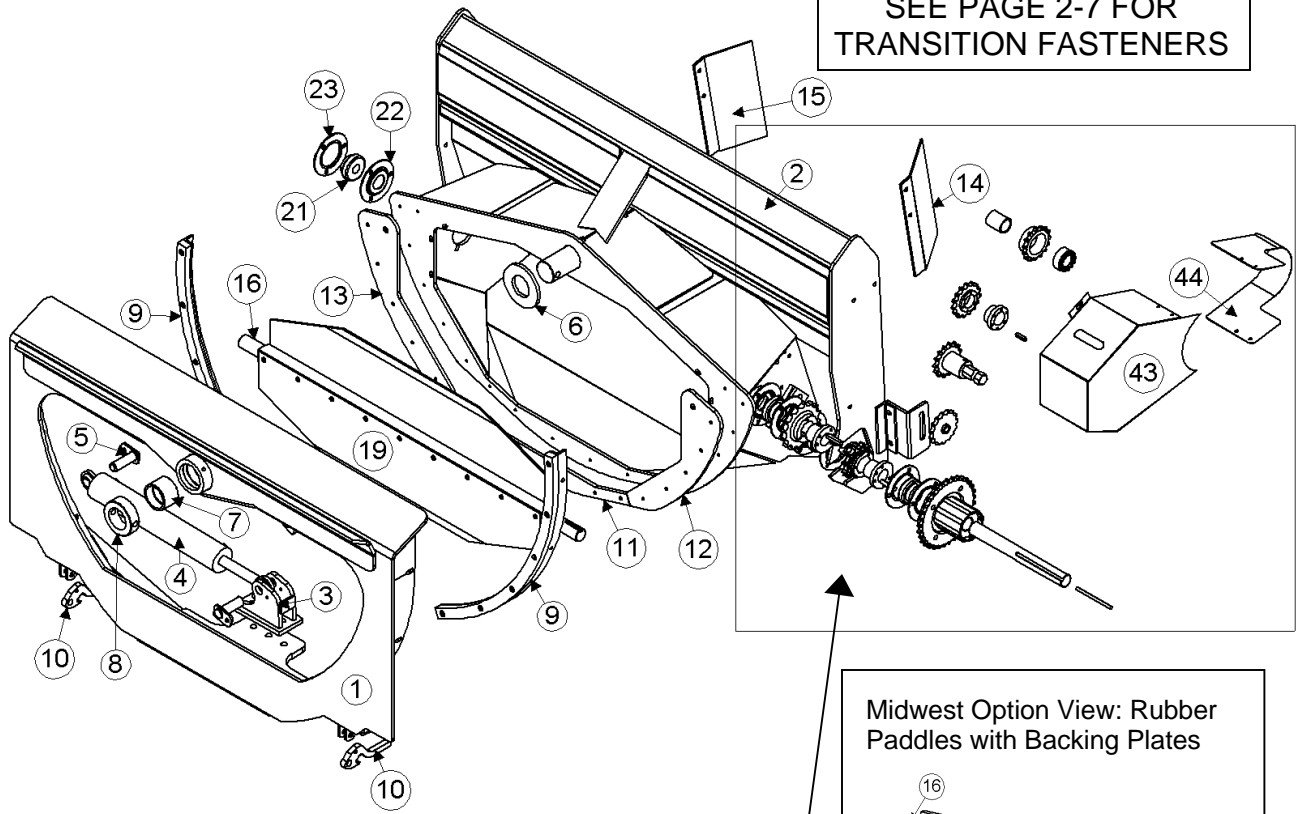
The reference to right-hand and left-hand in this catalog is identified by the operator sitting in the operator's seat, looking toward the front of the machine (in normal forward travel).

### PARTS ORDERS

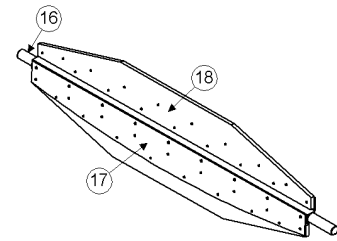
Orders must specify product model, serial number, correct part number, complete description, quantity required, method of shipment, shipping address, and billing address.

## 2 TRANSITION

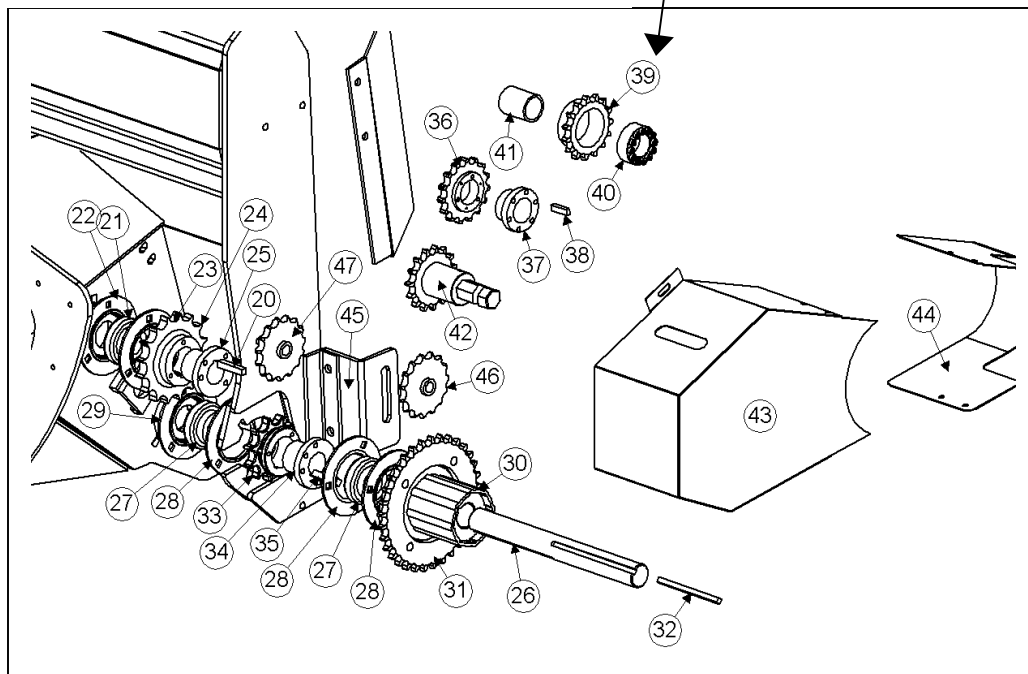
SEE PAGE 2-7 FOR  
TRANSITION FASTENERS



Midwest Option View: Rubber  
Paddles with Backing Plates



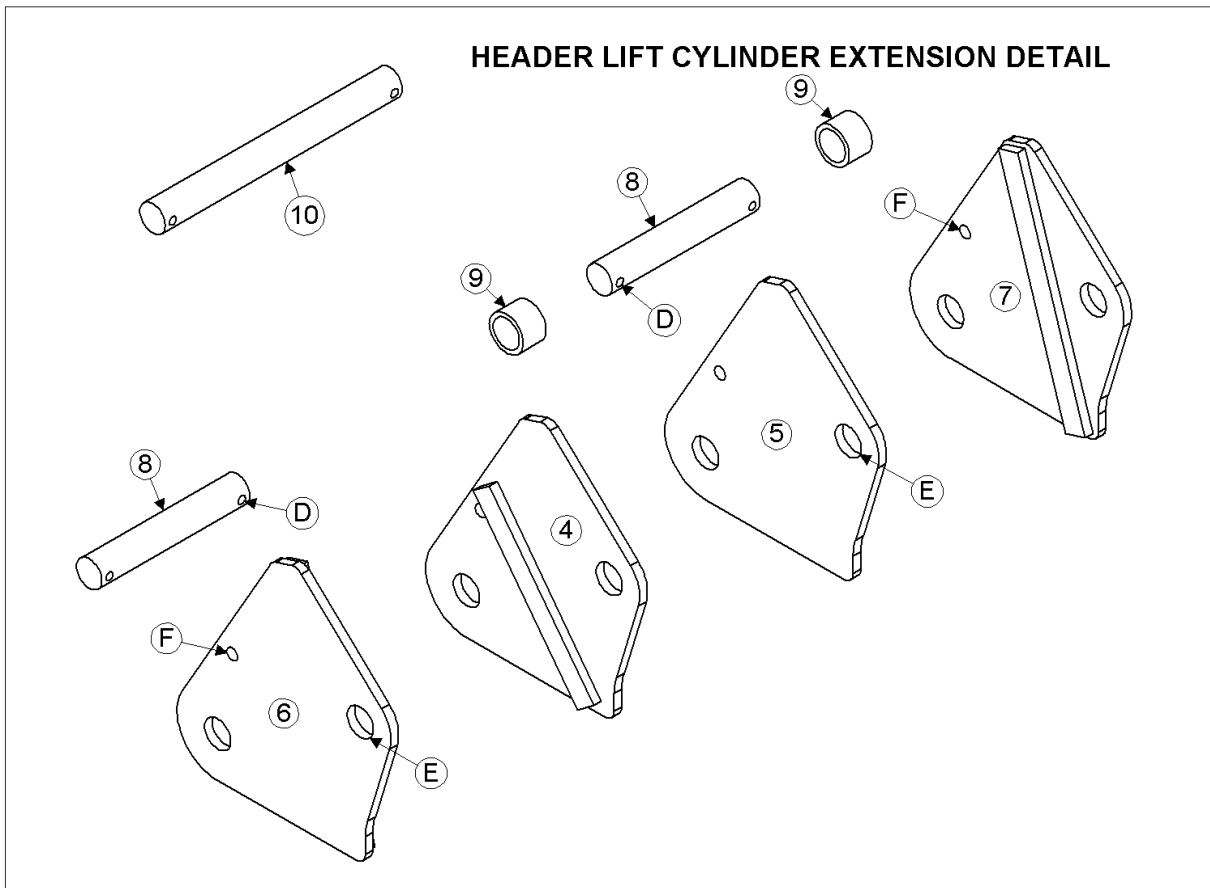
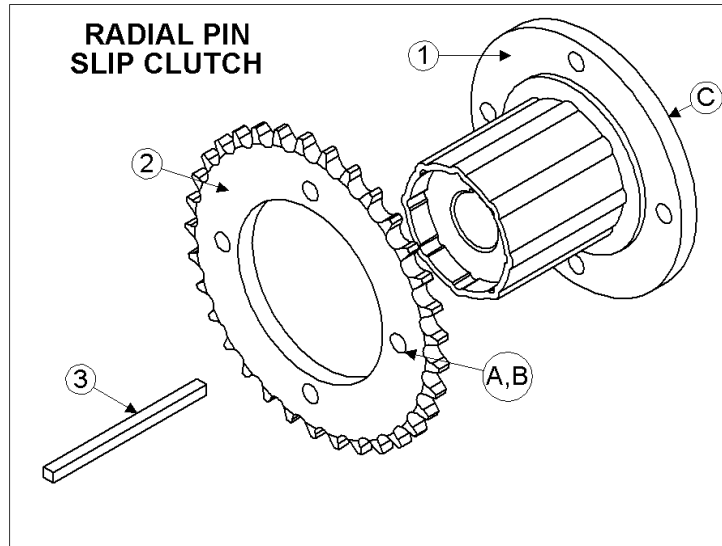
## TRANSITION DRIVE COMPONENT DETAIL



Model 2600 Hillco Leveling System  
For Serial Numbers 2600-1043 thru 2600-1047

<b>TRANSITION</b>				
<b>REF.</b>	<b>PART NO.</b>	<b>QTY.</b>	<b>PART NAME</b>	<b>NOTES</b>
1	LA-227101	1	TA ADAPTER ASM	
2	LA-226852	1	TT THROAT ASM	
3	LA-225411	1	TA MOUNT ASM, ROD	
4	HC-100706	1	CYLINDER, SLAVE	SEE HYDRAULICS PAGE 8-1
NS	HC-134191	1	SEAL KIT, SLAVE CYLINDER	
5	LA-229071	2	TM PIN ASM, TRIM CYLINDER	
6	LP-218371	1	TT RING, WEAR	
7	LM-226831	1	TM BUSHING, PIVOT	
8	LM-226841	1	TM COLLAR, PIVOT	
9	LA-243711	2	ANGLE BACKING ASM 26-2800	
..	F-FHS-05F20	16	FHSC 5/16-24 X 1-1/4	
..	F-HNS-05F	16	HN 5/16-24 STOVER	
10	LM-213291	2	TA ARM, HEADER LOCK	
11	LM-225522	1	TT PLATE, WEAR BOTTOM	
12	LM-225531	1	TT PLATE, WEAR LH	
13	LM-225541	1	TT PLATE, WEAR RH	
14	LP-219402	1	TM SPACER, LFT THROAT	
15	LP-219392	1	TM SPACER, RHT THROAT	
<b>BEATER SHAFT</b>				
16	LM-221601	1	TB SHAFT	
17	LM-213201	2	TB PLATE, PADDLE BACKING	MIDWEST COMBINES ONLY
18	LP-104791	2	TB PADDLE (RUBBER)	MIDWEST COMBINES ONLY
19	LM-238091	2	TB PADDLE (METAL)	NORTHWEST COMBINES ONLY
20	LS-212701	1	TM KEY, BEATER DRIVE	
21	MC-100548	2	INSERT, BEARING, 1-7/16	
22	LA-243691	2	TM ASM, INNER FLANGETTE	
23	MC-101339	1	FLANGETTE, RND BEARING (PAIR)	
24	MC-135501	1	SPROCKET, 16T 80P	
25	MC-135511	1	HUB, SPLIT TAPER 1-7/16	
NS	LP-213242	1	TM CHAIN, 30 PIN #80	
NS	MC-101333	1	LINK, CONNECTING, 80P	
NS	MC-101332	1	LINK, HALF, 80P	
<b>TRANSITION THROAT JACK SHAFT</b>				
26	LM-234152	1	TT SHAFT, JACK	
27	MC-100548	2	INSERT, BEARING, 1-7/16	
28	MC-101339	3	FLANGETTE, RND BEARING	
29	LA-245191	1	TM ASM, JS INNER FLANGETTE	
30	MC-136921	1	SLIP CLUTCH ASM, RADIAL PIN	
31	LM-226532	1	TM SPROCKET, RADIAL SLIP CLUTCH	SEE PAGE 2-3 FOR DETAIL
32	LM-244471	1	TM KEY, RADIAL SLIP CLUTCH	
33	MC-135491	1	SPROCKET, 11T, 80P	
34	MC-135511	1	HUB, SPLIT TAPER 1-7/16	
35	LS-212701	1	TM KEY, BEATER DRIVE	
NS	LP-213252	1	TM CHAIN, 62 PIN #60	
NS	MC-100240	1	LINK, HALF, 60P	
NS	MC-100239	1	LINK, CONNECTING, 60P	
<b>FEEDER HOUSE BEATER DRIVE</b>				
36	MC-100760	1	SPROCKET, QD, 60P, 15T	BEFORE SN JJCO182025
37	MC-100762	1	HUB, QD, 1-1/2B	BEFORE SN JJCO182025
38	LM-234221	1	TM KEY, FEEDER SHAFT	BEFORE SN JJCO182025
39	MC-101839	1	SPROCKET, POWER LOCK, 60P, 15T	SN JJCO182025 TO JJCO253999
40	MC-101838	1	HUB, POWER LOCK, 1-3/8B	SN JJCO182025 TO JJCO253999
41	LM-207011	1	TM SPACER, DRIVE SPROCKET	BEFORE SN JJCO254000
42	LA-234251	1	TM DRIVE ASM, TRANSITION	SN JJCO254000 AND AFTER
43	LA-243821	1	TM SHIELD, BEATER DRIVE	ALL COMBINES
44	LM-243841	1	TM SKIRT, BEATER DRIVE SHIELD	BEFORE SN JJCO254000
NS	LM-243831	1	TM SKIRT, BEATER DRIVE SHIELD	SN JJCO254000 AND AFTER
NS	LM-243801	1	TM BRACKET, 60P IDLER	BEFORE SN JJCO254000
45	LM-243792	1	TM BRACKET, 60P IDLER	SN JJCO254000 AND AFTER
<b>TENSIONER</b>				
46	MC-100237	1	SPROCKET, IDLER, 60P, 15T, 5/8B	
47	MC-137441	1	SPROCKET, IDLER 80P, 12T, 3/4B	

### **RADIAL PIN SLIP CLUTCH AND HEADER LIFT CYLINDER EXTENSIONS**



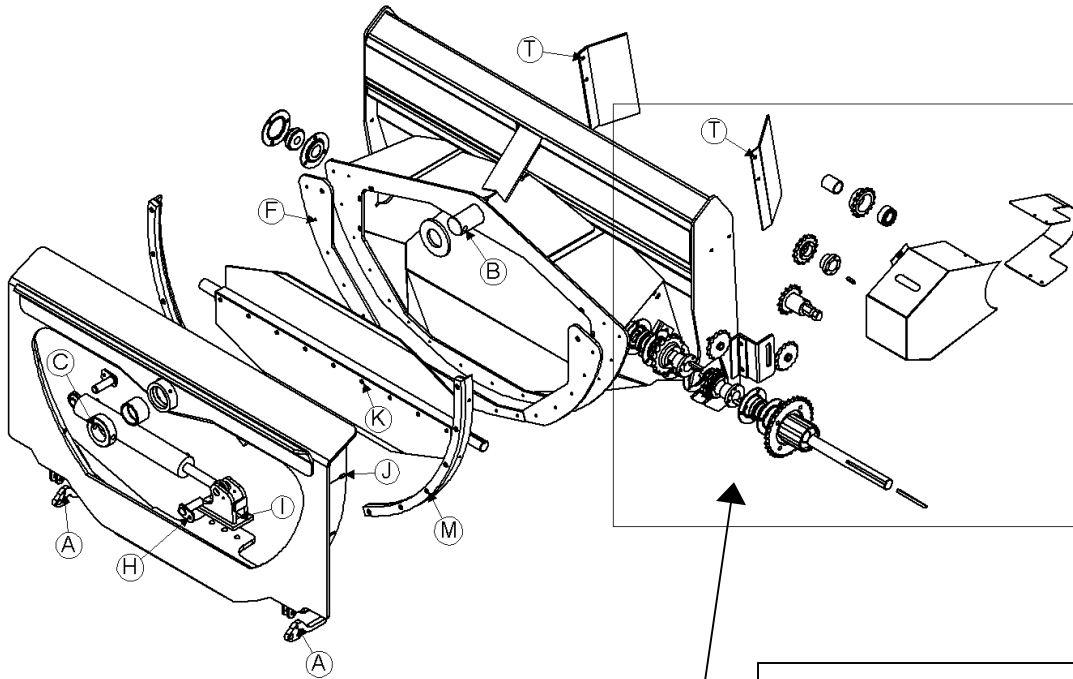


Model 2600 Hillco Leveling System  
For Serial Numbers 2600-1043 thru 2600-1047

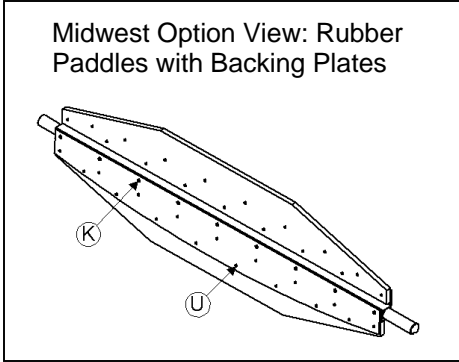
<b>RADIAL PIN SLIP CLUTCH ASM</b>				
<b>REF.</b>	<b>PART NO.</b>	<b>QTY.</b>	<b>PART NAME</b>	<b>NOTES</b>
1	MC-136921	1	RADIAL PIN SLIP CLUTCH ASM 1-7/16B & 5/16 KEY	
2	LM-226532	1	TM SPROCKET, PLATE, 33T 60P	
3	LM-244471	1	TM KEY, RADIAL PIN SLIP CLUTCH	
A	F-HC8-08F20	4	HC8 1/2-20 X 1-1/4	
B	F-LW-08A	4	LW 1/2 HD	
C	F-SSS-06C08	2	SCREW, SOCKET SET 3/8-16 X 1/2	
<b>HEADER LIFT CYLINDER EXTENSIONS</b>				
<b>60 IN. FEEDER HOUSE OPTION</b>				
<b>REF.</b>	<b>PART NO.</b>	<b>QTY.</b>	<b>PART NAME</b>	<b>NOTES</b>
4	LA-220631	↓	LM EXTENSION ASM, LIFT CYLINDER INNER LH	
4	..	1	WITH 2 HEADER LIFT CYLINDERS	
NS	..	2	WITH 3 HEADER LIFT CYLINDERS	
5	LA-220661	1	LM EXTENSION ASM, LIFT CYLINDER INNER RH	
6	LA-220641	1	LM EXTENSION ASM, LIFT CYLINDER OUTER LH	
7	LA-220651	1	LM EXTENSION ASM, LIFT CYLINDER OUTER RH	
8	LM-218501	2	LM PIN, HEADER LIFT CYLINDER ROD MOUNT	
9	LM-226961	2	LM SPACER, HEADER LIFT CYLINDER	
<b>54 IN. FEEDER HOUSE WITHOUT ROCK TRAP OPTION</b> <i>(DOES NOT INCLUDE MIDWEST UNITS)</i>				
<b>REF.</b>	<b>PART NO.</b>	<b>QTY.</b>	<b>PART NAME</b>	<b>NOTES</b>
6	LA-220641 OR LA-240111	2	LM EXTENSION ASM, LIFT CYLINDER OUTER LH	
7	LA-220651 OR LA-240121	↓	LM EXTENSION ASM, LIFT CYLINDER OUTER RH	
7	..	2	WITH 2 HEADER LIFT CYLINDERS	
NS	..	3	WITH 3 HEADER LIFT CYLINDERS	
8	LM-218501	2	LM PIN, HEADER LIFT CYLINDER ROD MOUNT	
9	LM-226961	↓	LM SPACER, HEADER LIFT CYLINDER	
9	..	2	WITH 2 HEADER LIFT CYLINDERS	
NS	..	4	WITH 3 HEADER LIFT CYLINDERS	
<b>54 IN. FEEDER HOUSE WITH ROCK TRAP AND THIRD HEADER LIFT CYLINDER</b>				
<b>REF.</b>	<b>PART NO.</b>	<b>QTY.</b>	<b>PART NAME</b>	<b>NOTES</b>
10	LM-235481	1	LM PIN, 3RD HEADER LIFT CYLINDER ROD MNT	
<b>54.5 IN. &amp; 60 IN. FEEDER HOUSE WITHOUT ROCK TRAP FASTENERS</b>				
<b>REF.</b>	<b>PART NO.</b>	<b>QTY.</b>	<b>PART NAME</b>	<b>WHERE USED</b>
D	F-PCT-05X48	4	COTTER PIN 5/16 x 3	
E	F-HC8-20C40	↓	HC8 1-1/4-7 X 2-1/2 ZINC PLT	
E	..	4	WITH 2 HEADER LIFT CYLINDERS	
NS	..	5	WITH 3 HEADER LIFT CYLINDERS	
E	F-HNS-20C	↓	HN8 1-1/4-7 STOVER PLT	
E	..	4	WITH 2 HEADER LIFT CYLINDERS	
NS	..	5	WITH 3 HEADER LIFT CYLINDERS	
F	F-HC5-08C104	↓	HC5 1/2-13 X 6-1/2	
F	..	2	WITH 2 HEADER LIFT CYLINDERS	
NS	..	1	WITH 3 HEADER LIFT CYLINDERS	
F	F-HNS-08C	2	HN 1/2-13, STOVER LOCK	
NS	F-HC5-08C176	↓	HC5 1/2-13 X 11	
NS	..	1	WITH 3 HEADER LIFT CYLINDERS	

Model 2600 Hillco Leveling System  
 For Serial Numbers 2600-1043 thru 2600-1047

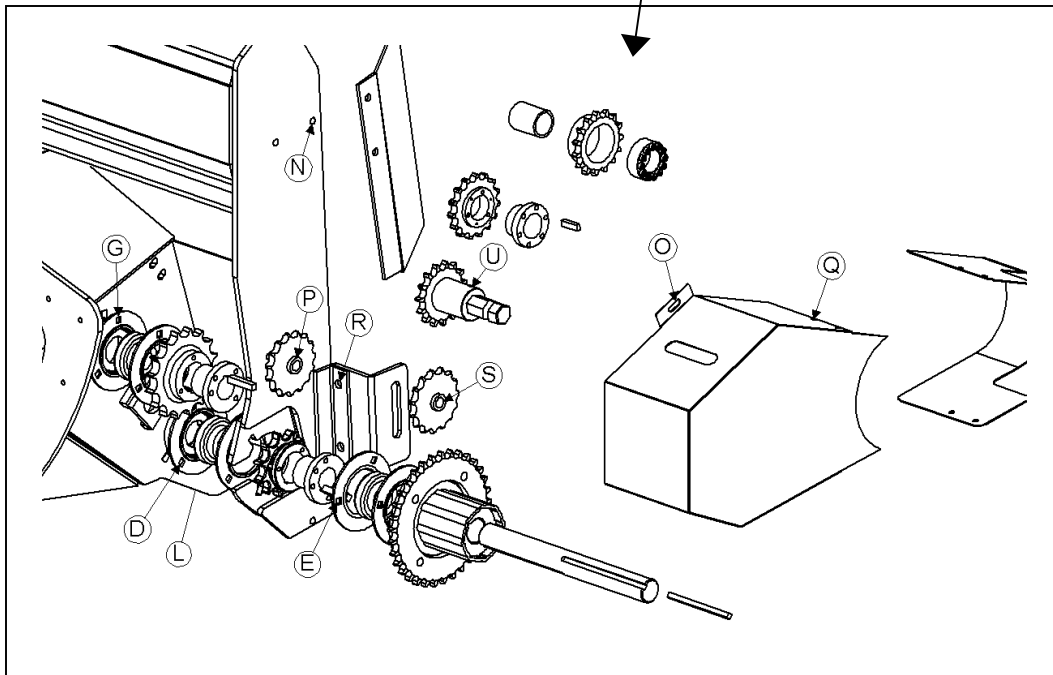
**TRANSITION FASTENERS**



\*Note: The fasteners with the reference number "L" attach to the bottom of the Transition for mounting purposes, however they cannot be seen in this view. The leader is pointing to the general area where the fasteners will be found.



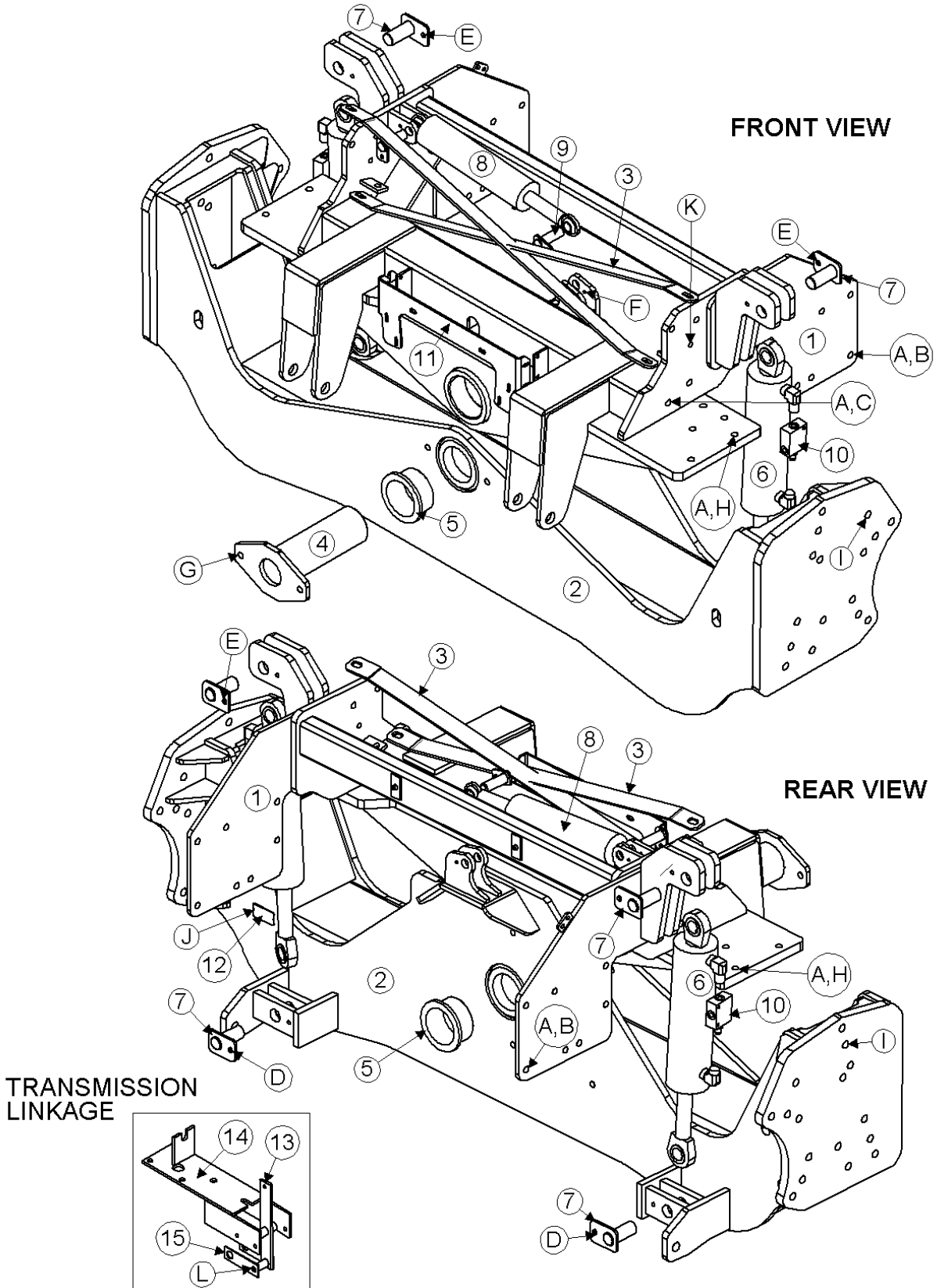
**Drive Component Fasteners Detail:**



Model 2600 Hillco Leveling System  
For Serial Numbers 2600-1043 thru 2600-1047

<b>TRANSITION FASTENERS</b>				
<b>REF.</b>	<b>PART NO.</b>	<b>QTY.</b>	<b>PART NAME</b>	<b>WHERE USED</b>
A	F-PCL-10X24	2	PIN, CLEVIS, 5/8 X 1-1/2 Plt	HEADER LOCK ARM
A	F-PCT-02X16	2	PIN, COTTER, 1/8 X 1	HEADER LOCK ARM
B	F-MB-14NR40	3	BUSHING, MACH 14 GA, NR, 2-1/2 ID	TT PIVOT PIN
C	F-HC8-10C80	1	HC8 5/8-11 X 5 Zinc Plt	TT PIVOT PIN COLLAR
C	F-HNS-10C	1	HN8 5/8-11, STOVER	TT PIVOT PIN COLLAR
D	F-CB-06C20	3	BOLT, CARRIAGE, 3/8-16 X 1-1/4	INNER JACKSHAFT BEARING
D	F-HN5-06C	3	HN5 3/8-16	INNER JACKSHAFT BEARING
D	F-LW-06	3	LW 3/8	INNER JACKSHAFT BEARING
E	F-CB-06C20	3	BOLT, CARRIAGE, 3/8-16 X 1-1/4	OUTER JACKSHAFT BEARING
E	F-HN5-06C	3	HN5 3/8-16	OUTER JACKSHAFT BEARING
E	F-LW-06	3	LW 3/8	OUTER JACKSHAFT BEARING
F	F-FHS-05F10	18	FHSC 5/16-24 X 5/8	UHMW WEAR PADS TO FACE PLATE
G	F-LW-06	6	LW 3/8	TT BEATER BRNG
G	F-CB-06C20	6	BOLT, CARRIAGE, 3/8-16 X 1-1/4	TT BEATER BRNG
G	F-HN5-06C	6	HN5 3/8-16	TT BEATER BRNG
H	F-HC5-06C12	2	HC5 3/8-16 X 3/4	SLAVE CYL MNT PIN
H	F-LW-06	2	LW 3/8	SLAVE CYL MNT PIN
I	F-HC8-10C32	3	HC8 5/8-11 X 2 Zinc Plt	ROD MNT
I	F-HNS-10C	3	HN8 5/8-11 STOVER	ROD MNT
J	F-HC5-06C20	8	HC5 3/8-16 X 1-1/4	BACKING ANGLE
J	F-HNS-06C	8	HN5 3/8-16 STOVER	BACKING ANGLE
J	F-FWH-06	8	FW 3/8 HD	BACKING ANGLE
K	F-HC8-08C44	9	HC8 1/2 -13 X 2-3/4 ZINC PLT	BEATER BACKING PLT MNT OR STEEL PADDLES
K	F-HNSF-08C	9	HN8 1/2-13, STOVER FLNG	BEATER BACKING PLT MNT OR STEEL PADDLES
L	F-HC5-08C32	2	HC5 1/2-13 X 2	TRANSITION MNT
L	F-HN5-08C	2	HN5 1/2-13	TRANSITION MNT
L	F-LW-08	2	LW 1/2	TRANSITION MNT
M	F-FHS-05F20	16	FHSC 5/16-24 X 1-1/4	UHMW BACKING WEAR PAD
M	F-HNS-05F	16	HN 5/16-24, STOVER	UHMW BACKING WEAR PAD
N	F-THM-06C16	2	THMS 3/8-16 X 1	HEADER HYDRAULIC COUPLER MOUNT
N	F-HNF-06C	2	HN 3/8-16, FLNG SERR	HEADER HYDRAULIC COUPLER MOUNT
O	F-THMS-05C16	2	THMS 5/16-18 X 1, SLT SERR	BEATER DRIVE SHIELD
O	F-HNF-05C	2	HN 5/16-18, FLNG SERR	BEATER DRIVE SHIELD
P	F-HNN-12C	1	HN 3/4-10 NYLOCK	80P IDLER SPROCKET
P	F-FWH-12	5	FW 3/4 HD	80P IDLER SPROCKET
P	F-MB-12WR18	2	BUSHING, MACH 18 GA, WR, 3/4 ID	80P IDLER SPROCKET
P	LM-248981	1	TM BOLT, 80P IDLER SPROCKET	80P IDLER SPROCKET
Q	F-THMS-04C08	4	THMS 1/4-20 X 1/2, SLT SERR	BEATER DRIVE SHIELD
Q	F-HNF-04C	4	HN 1/4-20, FLNG SERR	BEATER DRIVE SHIELD
R	F-HC5-08C20	2	HC5 1/2-13 X 1-1/4	60P IDLER SPROCKET BRACKET
R	F-LW-08	2	LW 1/2	60P IDLER SPROCKET BRACKET
R	F-HN5-08C	2	HN5 1/2-13	60P IDLER SPROCKET BRACKET
S	F-CB-10C40	1	BOLT, CARRIAGE GR 5 5/8-11 X 2-1/2	60P IDLER SPROCKET
S	F-HNN-10C	1	HN 5/8-11 NYLOCK	60P IDLER SPROCKET
S	F-FWH-10	10	FW 5/8 HD	60P IDLER SPROCKET
S	F-FWH-12	1	FW 3/4 HD	60P IDLER SPROCKET
T	F-THM-06C16	4	THMS 3/8-16 X 1	TRANSITION THROAT SPACER
T	F-HNF-06C	4	HN 3/8-16, FLNG SERR	TRANSITION THROAT SPACER
<b>FOR COMBINES WITH SERAL NUMBERS JJCO254000 &amp; AFTER (THESE ARE ALL COMBINES WITH HYDRAULIC HEADER REVERSER)</b>				
U	F-SSS-06C08	2	SET SCREW, SOCKET 3/8-16 X 1/2, GRADE 8	USE #242 LOCTITE WITH THESE FASTENERS
<b>FOR MIDWEST COMBINES</b>				
V	F-EB-04C20	34	BOLT, ELEVATOR, 1/4-20 X 1-1/4 ZINC PLT	BEATER PADDLES
V	F-HNF-04C	34	SERR. FLHN 1/4-20 ZINC PLT	BEATER PADDLES

### 3 CARRIAGE

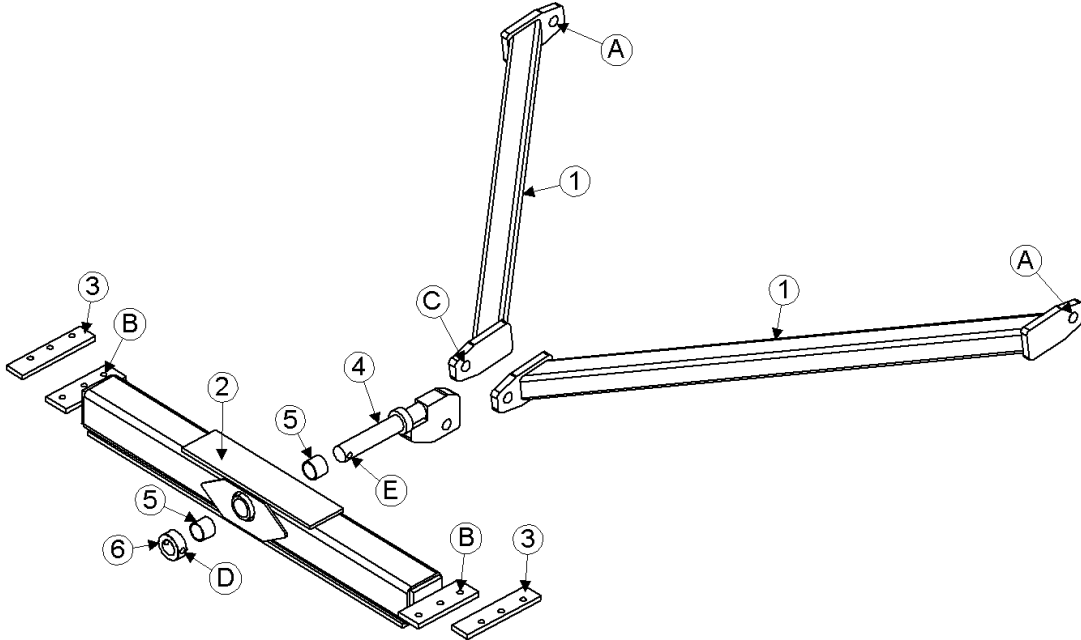


Model 2600 Hillco Leveling System  
For Serial Numbers 2600-1043 thru 2600-1047

<b>CARRIAGE</b>				
<b>REF.</b>	<b>PART NO.</b>	<b>QTY.</b>	<b>PART NAME</b>	<b>NOTES</b>
1	LA-227223	1	CO ASM	
2	LA-227233	1	CU UNDERCARRIAGE ASM	
3	LM-226171	2	CO STRAP, X BRACE	
4	LA-217691	1	CM PIN ASM, MAIN PIVOT	
5	LP-103871	2	CO BUSHING, PIVOT	
6	HC-101841	2	CYLINDER, MAIN	SEE HYDRAULIC PAGE 8-1
7	LA-230551	4	CM PIN ASM, MAIN CYLINDER	
8	HC-101842	1	CYLINDER, MASTER	SEE HYDRAULIC PAGE 8-1
9	LA-229071	2	TM PIN ASM, TRIM CYLINDER	
10	HC-138901	2	VALVE, COUNTERBALANCE	SEE HYDRAULIC PAGE 8-1
11	LP-249121	1	EM PLATE, MAIN CONTROL	
12	LA-255941	1	TAG, SERIAL NUMBER	
13	LA-226311	1	LM ARM ASM, TRANSMISSION	
14	LA-226301	1	LM LINKAGE ASM, TRANSMISSION	
15	LM-226291	2	LM PLATE, TRANSMISSION LINAKAGE	
<b>OPTIONAL CARRIAGE COMPONENTS</b>				
NS	MC-137491	?	COLLAR, 2 PIECE CLAMPING	QTY AS NEEDED
NS	MC-137511	?	WASHER, QUICK REPAIR 1-1/2"	QTY AS NEEDED
<b>CARRIAGE FASTENERS</b>				
<b>REF.</b>	<b>PART NO.</b>	<b>QTY.</b>	<b>PART NAME</b>	<b>WHERE USED</b>
A	F-HNS-10C	26	HN8 5/8-11 STOVER LOCK	OVERCARRIAGE
A	F-FWH-10	28	FW HD 5/8	OVERCARRIAGE
B	F-HC8-10C24	14	HC8 5/8-11 x 1-1/2	OVERCARRIAGE REAR SIDE PLT
C	F-HC8-10C32	12	HC8 5/8-11 x 2	OVERCARRIAGE FRONT SIDE PLT
D	F-HC5-08C16	2	HC5 1/2-13 X 1	LOWER MAIN CYL MNT PIN
D	F-LW-08	2	LW 1/2	LOWER MAIN CYL MNT PIN
E	F-HC5-08C16	2	HC5 1/2-13 X 1	TOP MAIN CYL MNT PIN
E	F-LW-08	2	LW 1/2	TOP MAIN CYL MNT PIN
F	F-HC5-06C14	2	HC5 3/8-16 X 7/8	MASTER CYL MNT PIN
F	F-LW-06	2	LW 3/8	MASTER CYL MNT PIN
G	F-HC8-10C36	2	HC8 5/8-11 X 2-1/4	MAIN PVT PIN
G	F-HNS-10C	2	HN8 5/8-11, STOVER	MAIN PVT PIN
G	F-FW-10	2	FW 5/8	MAIN PVT PIN
H	F-HC8-10C36	6	HC8 5/8-11 x 2-1/4	OVERCARRIAGE BASE PLT
I	F-SHC-20M065E	6	SHCS 10.9-20 X 2.5 X 65	FINAL DRIVE MOUNTING
I	F-HC-20M065E	22	HC 10.9-20 X 2.5 X 65	FINAL DRIVE MOUNTING
I	F-LWH-20M	28	LW 20 HD	FINAL DRIVE MOUNTING
J	F-UDS-#7X06	2	SCREW, U-DRIVE # 7 x 3/8	SERIAL NUMBER PLT
K	F-HC8-08C40	1	HC8 1/2-13 X 2-1/2 Zinc Plt	OC RIGHT FRONT SIDE PLATE
K	F-HNS-08C	1	HN8 1/2-13 STOVER	OC RIGHT FRONT SIDE PLATE
K	F-FWH-08	1	FW HD 1/2	OC RIGHT FRONT SIDE PLATE
L	F-HC5-08C48	1	HC5 1/2-13 X 3	TRANSMISSION LINKAGE
L	F-HNN-08C	1	HN 1/2-13, NYLOCK	TRANSMISSION LINKAGE

Model 2600 Hillco Leveling System  
For Serial Numbers 2600-1043 thru 2600-1047

### 4 Y-BRACE

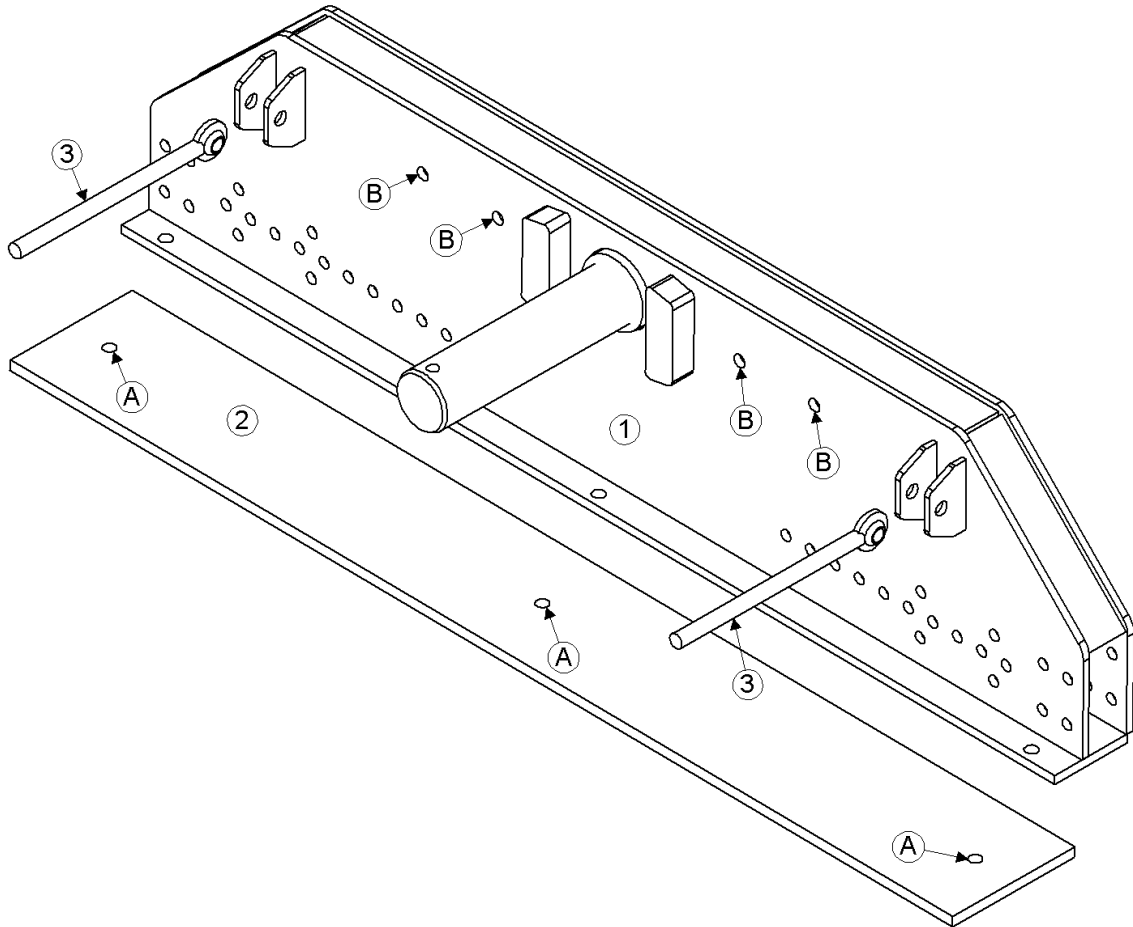


Model 2600 Hillco Leveling System  
For Serial Numbers 2600-1043 thru 2600-1047

<b>Y-BRACE</b>				
<b>REF.</b>	<b>PART NO.</b>	<b>QTY.</b>	<b>PART NAME</b>	<b>NOTES</b>
1	LA-226991	2	YB ARM ASM	
2	LA-217651	1	YB CROSS SUPPORT ASM	
3	LM-226061	2	YB CLAMP, CROSS SUPPORT	
4	LA-228761	1	YB PIN ASM, PIVOT	
5	LM-245431	2	YB BUSHING, PLANE	
6	LM-234101	1	YB COLLAR, PIVOT PIN	
<b>Y-BRACE FASTENERS</b>				
<b>REF.</b>	<b>PART NO.</b>	<b>QTY.</b>	<b>PART NAME</b>	<b>WHERE USED</b>
A	F-HC8-16C44	2	HC8 1-8 x 2-3/4	Y-BRACE FRNT MNT
A	F-HNS-16C	2	HN8 1-8, STOVER	Y-BRACE FRNT MNT
B	F-HC8-08C36	6	HC8 1/2-13 x 2-1/4	Y-BRACE FRAME MNT
B	F-HNS-08C	6	HN8 1/2-13, STOVER	Y-BRACE FRAME MNT
C	F-HC8-16C72	1	HC8 1-8 x 4-1/2	Y-BRACE REAR MNT
C	F-HNS-16C	1	HN8 1-8, STOVER	Y-BRACE REAR MNT
D	F-HC8-08C48	1	HC8 1/2-13 x 3	Y-BRACE PVT PIN
D	F-HNS-08C	1	HN8 1/2-13, STOVER	Y-BRACE PVT PIN
E	F-MB-18NR24	20	BUSHING, MACH 18 GA NR 1-1/2 ID	Y-BRACE PVT PIN

Model 2600 Hillco Leveling System  
For Serial Numbers 2600-1043 thru 2600-1047

### 5 DROP AXLE

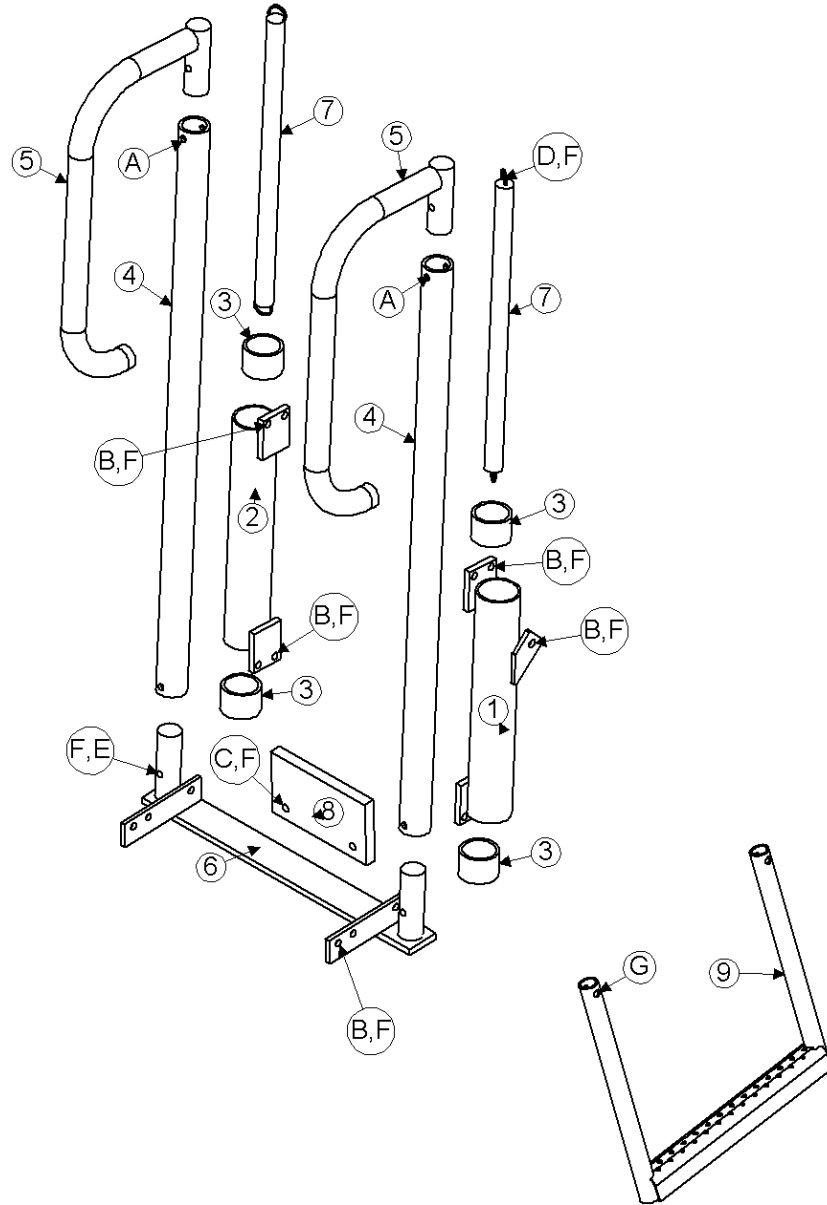




Model 2600 Hillco Leveling System  
For Serial Numbers 2600-1043 thru 2600-1047

<b>DROP AXLE</b>				
<b>REF.</b>	<b>PART NO.</b>	<b>QTY.</b>	<b>PART NAME</b>	<b>NOTES</b>
1	LA-226901	1	DA ASM	
2	LM-212561	1-10	DA WEIGHT, 160 LB	1600 LB MAX
3	MC-133711	2	LINK, BALL JOINT DRAG	
<b>DROP AXLE FASTENERS</b>				
<b>REF.</b>	<b>PART NO.</b>	<b>QTY.</b>	<b>PART NAME</b>	<b>WHERE USED</b>
NS	F-HC8-12C96	4	HC8 3/4-10 x 6	STEERING CYL MNT
A	F-HC8-12C56	3	HC8 3/4-10 x 3-1/2	1 WEIGHT BOLT PACKAGE
A	F-HC8-12C56	3	HC8 3/4-10 x 3-1/2	2 WEIGHT BOLT PACKAGE
A	F-HC8-12C72	3	HC8 3/4-10 x 4-1/2	3 WEIGHT BOLT PACKAGE
A	F-HC8-12C88	3	HC8 3/4-10 x 5-1/2	4 WEIGHT BOLT PACKAGE
A	F-HC8-12C96	3	HC8 3/4-10 x 6	5 WEIGHT BOLT PACKAGE
A	F-HC8-12C112	3	HC8 3/4-10 x 7	6 WEIGHT BOLT PACKAGE
A	F-HC8-12C120	3	HC8 3/4-10 x 7-1/2	7 WEIGHT BOLT PACKAGE
A	F-HC8-12C136	3	HC8 3/4-10 x 8-1/2	8 WEIGHT BOLT PACKAGE
A	F-HC8-12C144	3	HC8 3/4-10 x 9	9 WEIGHT BOLT PACKAGE
A	F-HC8-12C160	3	HC8 3/4-10 x 10	10 WEIGHT BOLT PACKAGE
A	F-HN8-12C	3	HN8 3/4-10	ALL WEIGHT BOLT PACKAGE
A	F-LW-12A	3	LW 3/4 HD	ALL WEIGHT BOLT PACKAGE
A	F-FWH-12	3	FW 3/4 HD	ALL WEIGHT BOLT PACKAGE
<b>COMBINES WITH 4WD</b>				
B	F-HC5-12C88	4	OPTIONAL HC5 3/4-10 X 5-1/2	4WD ASM MOUNT
B	F-FW-12	4	OPTIONAL FW 3/4	4WD ASM MOUNT
B	F-HNF-12C	4	OPTIONAL HN 3/4-10, FLNG, SERR	4WD ASM MOUNT
NS	F-HC8-12C96	6	HC8 3/4-10 x 6	STEERING CYL MNT

### 6 LADDER

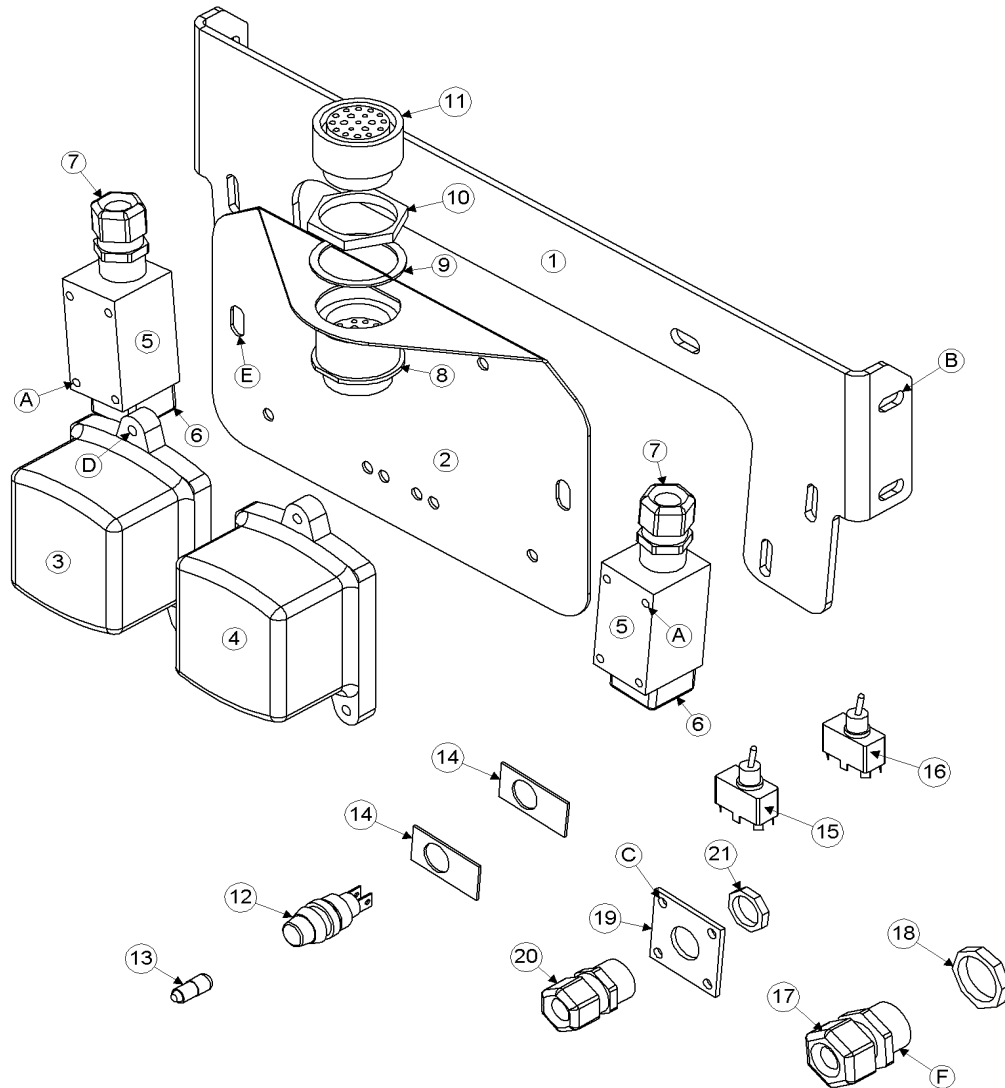


Model 2600 Hillco Leveling System  
For Serial Numbers 2600-1043 thru 2600-1047

<b>LADDER COMPONENTS</b>				
<b>REF.</b>	<b>PART NO.</b>	<b>QTY.</b>	<b>PART NAME</b>	<b>NOTES</b>
1	LA-214931	1	LM BUSHING ASM, SLIDE TUBE LH	
2	LA-219511	1	LM BUSHING ASM, SLIDE TUBE RH	
3	LM-214941	4	LM BUSHING, SLIDE	
4	LM-214951	2	LM TUBE, SLIDE	
5	LA-227001	2	LM HANDLE ASM, LADDER	
6	LA-226971	1	LM STEP ASM, SLIDE 21-2300	
7	MC-100710	2	SPRING, EXTENSION, ZINC PLATED	
8	LP-117921	1	LM BUMPER, STEP	
9	LA-238131	1	LM STEP ASM, REAR SERVICE LADDER	
<b>LADDER FASTENERS</b>				
<b>REF.</b>	<b>PART NO.</b>	<b>QTY.</b>	<b>PART NAME</b>	<b>WHERE USED</b>
A	F-PR-06X40	2	PIN, ROLL, 3/8 x 2-1/2	SECURES HANDLE ASM TO SLIDE TUBE
B	F-THMS-06C16	16	THMS 3/8-16 x 1, SLT, SERR	SECURES SLIDE BUSH TUBE ASM TO LADDER CHANNEL, HAND RAIL & BOTTOM STEP
C	F-PHMS-06C24	2	PHMS 3/8-16 X 1-1/2, SLT	BUMPER MNT
C	F-FW-06	2	FW 3/8	BUMPER MNT
D	F-PHMS-06C40	2	PHMS 3/8-16 x 2-1/2, SLT	TOP SPRING MNT
E	F-PHMS-06C56	2	PHMS 3/8-16 x 3-1/2, SLT	BOTTOM SPRING MNT AND SECURES SLIDE TUBE TO STEP ARM
F	F-HNF-06C	30	HN 3/8-16, FLNG, SERR	SECURES TUBE ASM TO LADDER CHNL., SPRING MNTS, HAND RAIL & BTM STEP
G	F-PHMS-06C32	2	PHMS 3/8-16 X 2, SLT.	RIGHT REAR SERVICE LADDER EXT STEP
G	F-HNF-06C	2	HN 3/8-16, FLNG, SERR	RIGHT REAR SERVICE LADDER EXT STEP
NS	LM-230811	2	CHAIN, 2/0 STR. LINK, PLATED - 1 LINK	BOTTOM SPRING MNT
NS	LM-230821	2	CHAIN, 2/0 STR. LINK, PLATED - 5 LINKS	TOP SPRING MNT

Model 2600 Hillco Leveling System  
For Serial Numbers 2600-1043 thru 2600-1047

**7 ELECTRICAL BOX**



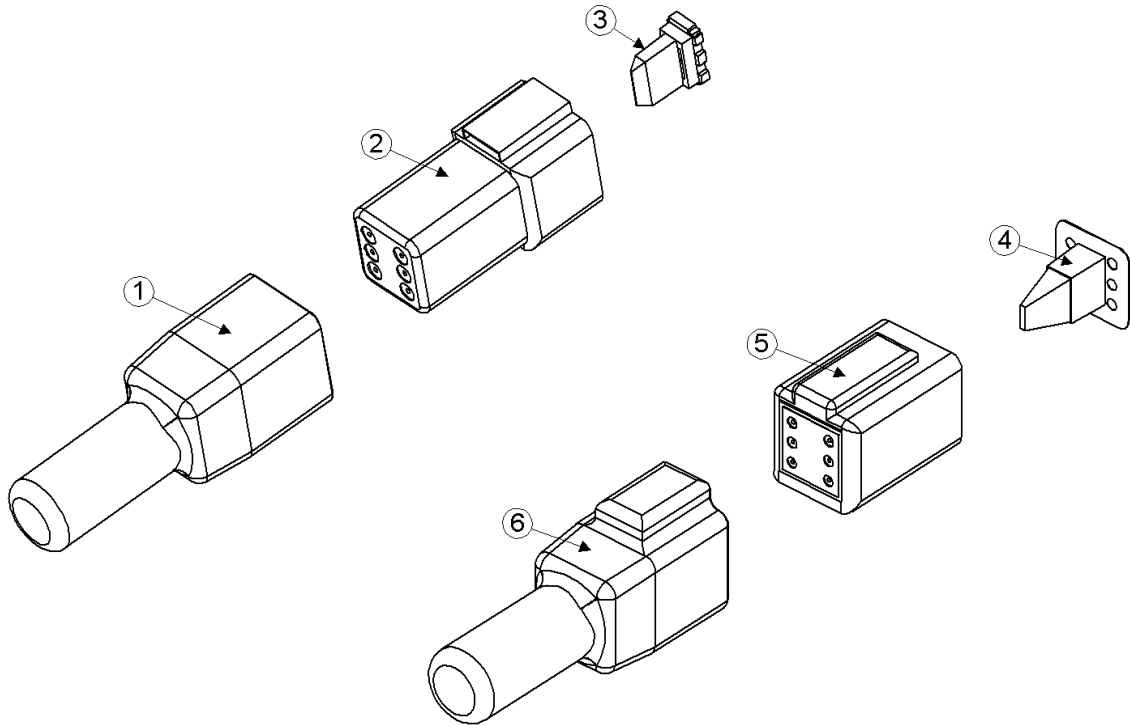
ELECTRICAL FASTENERS				
REF.	PART NO.	QTY.	PART NAME	WHERE USED
A	F-PHM-#10C28	4	PHMS 10-24 X 1-3/4	LIMIT SWITCH MNT
A	F-HNF-#10C	4	HN 10-24, FLNG SERR	LIMIT SWITCH MNT
B	F-HC5-05C12	4	HC5 5/16-18 X 3/4	EM PLATE ELECTRICAL MOUNT
B	F-HNF-05C	4	FLHN 5/16-18	EM PLATE ELECTRICAL MOUNT
C	F-THC-#10C08	4	TC HWH 10-24 X 1/2	STRAIN RELIEF MOUNT
D	F-THMS-04C12	6	THMS 1/4-20 X 3/4, SLT SERR	CONTROLLER MOUNT
D	F-HNF-04C	6	HN 1/4-20, FLNG SERR	CONTROLLER MOUNT
E	F-LWE-06	1	LW 3/8, EXTERNAL STAR	CONTROLLER MOUNTING PLATE
E	F-THMS-06C16	2	THMS 3/8-16 X 1, SLT SERR	CONTROLLER MOUNTING PLATE
E	F-HNF-06C	2	HN 3/8-16, FLNG SERR	CONTROLLER MOUNTING PLATE
F	F-MB-18NR18	2	BUSHING, MACH 18 GA, NR, 1-1/8 ID	STRAIN RELIEF ON SIDE OF CAB
NS	F-THMS-04C08	1	THMS 1/4-20 X 1/2, SLT SERR	GROUND
NS	F-HNF-04C	1	HN 1/4-20, FLNG SERR	GROUND

Model 2600 Hillco Leveling System  
For Serial Numbers 2600-1043 thru 2600-1047

<b>ELECTRICAL</b>				
<b>REF.</b>	<b>PART NO.</b>	<b>QTY.</b>	<b>PART NAME</b>	<b>NOTES</b>
<b>FOR ALL COMBINES</b>				
ASM	LA-249111	1	EM ASM, CONTROLLER	
1	LP-249121	1	EM PLATE, MAIN CONTROL	
2	LP-249181	1	EM PLATE, ELECTRICAL MOUNT	
3	EC-100002	1	LEVELING CONTROLLER, LOW SPEED	
4	EC-100003	1	LEVELING CONTROLLER, HIGH SPEED	
5	EC-100557	2	BODY, LIMIT SWITCH	
6	EC-100692	2	HEAD, LIMIT SWITCH STRAIGHT PLUNGER	
7	EC-138781	2	STRAIN RELIEF, NYLON, BLK,1/2 NPT	
8	EC-138751	1	DEUTSCH, RECEPTACLE	
9	EC-138771	1	DEUTSCH, PANEL LOCK WASHER	
10	EC-138761	1	DEUTSCH, PANEL NUT	
11	EC-138741	1	DEUTSCH PLUG	
12	EC-101876	1	LAMP, INDICATOR	IN CAB CONSOLE
13	EC-101877	1	BULB, INDICATOR LAMP	IN CAB CONSOLE
14	LM-219501	2	EM MOUNT, OUT OF LEVEL LAMP	IN CAB CONSOLE
NS	LL20-101869	1	PLATE, MAXIMUM LEVEL	IN CAB CONSOLE
15	EC-101874	1	SWITCH, TOGGLE, DP ON-OFF-ON, 3-POS.	AUTO/OFF/MANUAL SWITCH
16	EC-138731	1	SWITCH, TOGGLE, DP MO-OFF-MO, 3-POS.	LEFT/RIGHT LEVELING SWITCH
NS	LL20-101868	1	PLATE, CONSOLE SWITCH	IN CAB CONSOLE
17	EC-141891	1	STRAIN RELIEF, NYLON, BLK	
18	EC-141901	1	STRAIN RELIEF NUT, NYLON, BLK	
<b>FOR COMBINES WITH FIELD TRACKER</b>				
NS	LA-236731	1	AUTO CENTER DISABLE RELAY KIT	
<b>FOR COMBINES WITH FIELD TRACKER ELECTRONICS, BUT NO VALVE</b>				
NS	EC-138781	1	STRAIN RELIEF, NYLON, BLK,1/2 NPT	MOUNTED TO TRIM VALVE
NS	LA-236731	1	AUTO CENTER DISABLE RELAY KIT	
<b>FOR COMBINES WITHOUT FIELD TRACKER</b>				
19	LM-207631	1	LM MOUNT, CAB STRAIN RELIEF	
20	EC-138781	1	STRAIN RELIEF, NYLON, BLK,1/2 NPT	RIGHT SIDE OF CAB
21	EC-142121	1	STRAIN RELIEF NUT, 1/2" NYLON, BLK	RIGHT SIDE OF CAB
NS	EC-138781	1	STRAIN RELIEF, NYLON, BLK,1/2 NPT	MOUNTED ON TRIM VALVE
ASM	LA-235472	1	LATERAL TILT RELAY KIT	
NS	..	1	EC-100009 - BASE, RELAY, AUTOMOTIVE	
NS	..	1	EC-100010 - RELAY, AUTOMOTIVE	

Model 2600 Hillco Leveling System  
For Serial Numbers 2600-1043 thru 2600-1047

## CONNECTORS



Model 2600 Hillco Leveling System  
For Serial Numbers 2600-1043 thru 2600-1047

<b>ELECTRICAL CONNECTORS</b>			
REF.	PART NO.	QTY.	PART NAME
<b>FOR ALL COMBINES</b>			
NS	EC-100164	20	PIN, ELECTRICAL
NS	EC-100165	20	SOCKET, SIZE 16 DEUTSCH
1	EC-100549	1	BOOT, 6 PIN
2	EC-100554	1	RECEPTACLE, 6 PIN
3	EC-100551	1	WEDGE, 6 PIN
NS	EC-100628	8	PLUG, SEALING, 18 GAUGE
NS	EC-100693	2	NUT, DRESS, 13/32-32
NS	ET-QC-20	1	QUICK-CONNECT, BLUE
NS	ET-SP-20	2	TERMINAL, FEMALE SPADE, NON-INSUL, 20 GA
NS	ET-ST-20#6	18	TERMINAL, RING, #6, 20 GA., NON-INSULATED
NS	ET-ST-2004	3	TERMINAL, RING, NON-INS, 1/4, 20 GA
<b>FOR FACTORY AND DEALER INSTALL WITH FIELD TRACKER ONLY</b>			
ASM	LA-236731	1	AUTO CENTER DISABLE RELAY KIT
NS	..	4	EC-139301 - SPADE, FIFO FEMALE .187
NS	..	1	EC-139311 - SPADE, FIFO FEMALE .250
NS	..	1	EC-139321 - SPADE, MALE .187 NON-INSUL (14-16)
NS	..	1	EC-139331 - RELAY, BOSCH
NS	..	1	ET-ST-20#10 - TERMINAL, RING, #10, 20 GA.
<b>FOR FACTORY INSTALL ONLY</b>			
ASM	LA-239402	1	FACTORY INSTAL MANIFOLD WIRING KIT
NS	..	3	EC-100165 - SOCKET, SIZE 16 DEUTSCH
4	..	1	EC-100552 - WEDGE, 6 SOCKET
5	..	1	EC-100553 - PLUG, 6 SOCKET
NS	..	3	EC-100628 - PLUG, SEALING, 18 GAUGE
NS	..	3	ET-ST-2008 - TERMINAL, RING, 1/2, 20 GA
<b>FOR DEALER INSTALL WITHOUT FIELD TRACKER ONLY</b>			
ASM	LA-235472	1	LATERAL TILT RELAY KIT
NS	..	8	EC-100008 - TERMINAL, RELAY, AUTOMOTIVE
NS	..	2	EC-100009 - BASE, RELAY, AUTOMOTIVE
NS	..	2	EC-100010 - RELAY, AUTOMOTIVE
NS	..	2	EC-100164 - PIN, ELECTRICAL
NS	..	7	EC-100165 - SOCKET, SIZE 16 DEUTSCH
4	..	1	EC-100552 - WEDGE, 6 SOCKET
5	..	1	EC-100553 - PLUG, 6 SOCKET
6	..	1	EC-100550 - BOOT, 6 SOCKET
NS	..	1	EC-100628 - PLUG, SEALING, 18 GAUGE
NS	..	1	ET-ST-20#10 - TERMINAL, RING, #10, 20 GA
NS	..	1	ET-ST-20#6 - TERMINAL, RING, #6, 20 GA
<b>FOR DEALER INSTALL WITH FIELD TRACKER ONLY</b>			
NS	EC-100165	3	SOCKET, SIZE 16 DEUTSCH
4	EC-100552	1	WEDGE, 6 SOCKET
5	EC-100553	1	PLUG, 6 SOCKET
6	EC-100550	1	BOOT, 6 SOCKET
NS	EC-100628	3	PLUG, SEALING, 18 GAUGE

**ELECTRICAL CABLES**



**#1 LA-249101**  
EM CABLE ASM, CONTROLLERS  
TO VALVE



**#2 LA-249091**  
EM CABLE ASM, CAB  
TO CONTROLLERS



**#3 LA-249081**  
EM CABLE ASM, LEVELING & TRIM



**#4 LA-249071**  
EM CABLE ASM, SWITCH  
TO VALVE



**#5 LA-249061**  
EM CABLE ASM, LEVELING



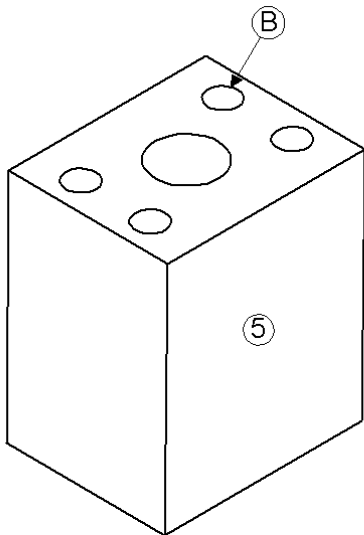
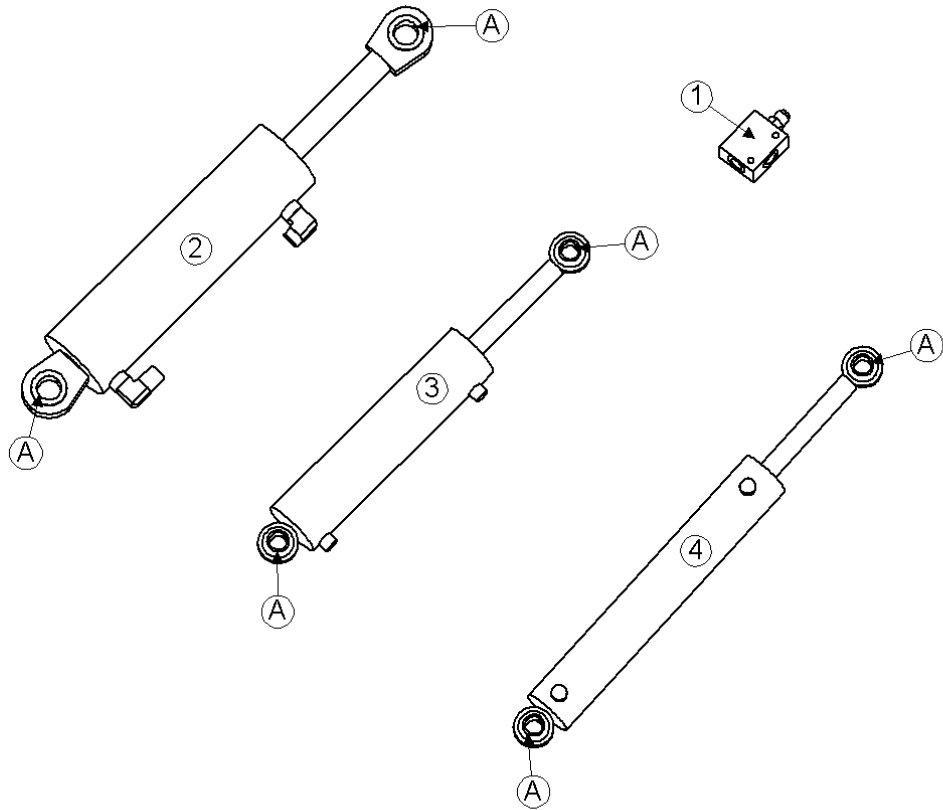
**#6 LA-249051**  
EM CABLE ASM, FIELD TRACKER JUMPER



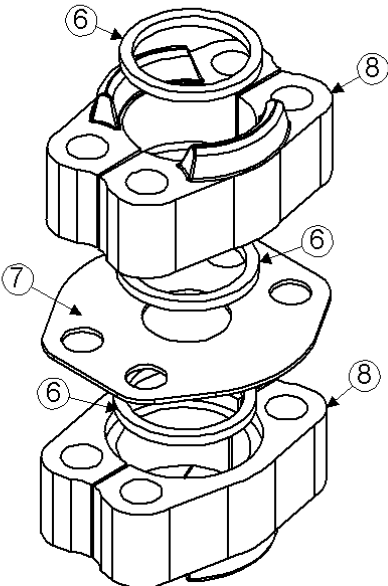
Model 2600 Hillco Leveling System  
 For Serial Numbers 2600-1043 thru 2600-1047

<b>CABLE ASSEMBLIES</b>			
<b>REF.</b>	<b>PART NO.</b>	<b>QTY.</b>	<b>PART NAME AND DESCRIPTION</b>
<b>FOR ALL COMBINES</b>			
1	LA-249101	1	CABLE ASM, CONTROLLERS TO VALVE
2	LA-249091	1	CABLE ASM, CAB TO CONROLLERS
<b>FOR COMBINES WITH LEVELING VALVE INTEGRATED INTO CASE-IH VALVE STACK</b>			
NS	LA-239402	1	26-2800 FACTORY INSTALL MANIFOLD WIRING KIT
<b>FOR COMBINES WITH HILLCO LEVELING &amp; FIELD TRACKER VALVES BUT NO FIELD TRACKER ELECTRONICS</b>			
3	LA-249081	1	CABLE ASM, LEVELING & TRIM
4	LA-249071	1	CABLE ASM, SWITCH TO VALVE
NS	LA-235472	1	RELAY KIT, HILLCO LATERAL TILT (21-2300)
<b>FOR COMBINES WITH HILLCO LEVELING VALAVE &amp; CASE-IH FIELD TRACKER VALVE</b>			
5	LA-249061	1	CABLE ASM, LEVELING
<b>FOR COMBINES WITH HILLCO LEVELING &amp; FIELD TRACKER VALVES &amp; FIELD TRACKER ELECTRONICS</b>			
6	LA-249051	1	CABLE ASM, FIELD TRACKER JUMPER

**8 HYDRAULICS**



MANFOLD, RELIEF VALVE



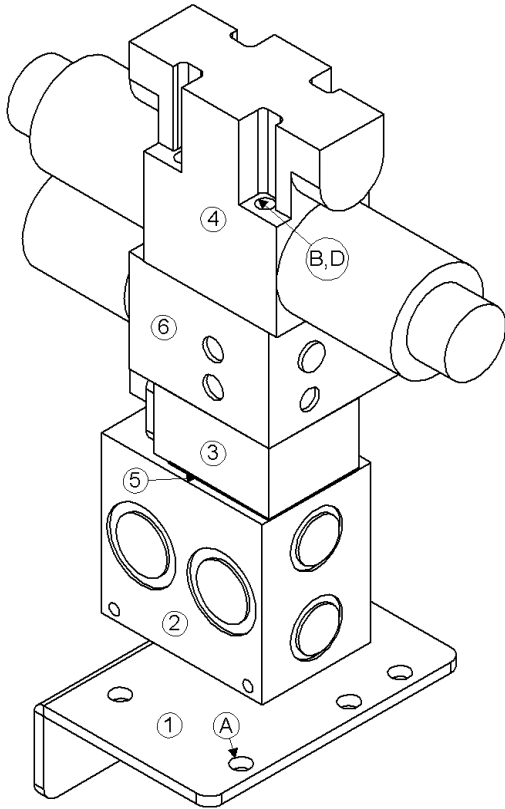
CODE 62 SPLIT FLANGE  
CONNECTOR KIT  
ASSEMBLY WITH O-RINGS

Model 2600 Hillco Leveling System  
For Serial Numbers 2600-1043 thru 2600-1047

<b>COUNTERBALANCE VALVE AND CYLINDERS</b>				
<b>REF.</b>	<b>PART NO.</b>	<b>QTY.</b>	<b>PART NAME</b>	<b>NOTES</b>
1	HC-138901	2	VALVE, 3-PORT COUNTERBALANCE	
..	HC-139171	2	BODY, COUNTERBALANCE VALVE	
..	HC-139161	2	CARTRIDGE, COUNTERBALANCE VALVE	
NS	HC-140361	2	KIT, SEAL, COUNTERBALANCE VALVE	
2	HC-101841	2	CYLINDER, MAIN	
..	HC-134241	2	KIT, SEAL, MAIN CYLINDER 2600	
3	HC-101842	1	CYLINDER, MASTER	
..	HC-134201	1	KIT, SEAL, MASTER CYLINDER	
4	HC-100706	1	CYLINDER, SLAVE	
..	HC-134191	1	KIT, SEAL, SLAVE CYLINDER	
5	HC-140011	1	HM EXTENSION, FORWARD PROPULSION	FORWARD PROPULSION HOSE AT HYDRO MOTOR
<b>CODE 62 SPLIT FLANGE CONNECTOR KIT ASSEMBLY</b>				
<b>REF.</b>	<b>PART NO.</b>	<b>QTY.</b>	<b>PART NAME</b>	<b>DESCRIPTION</b>
ASM	HC-101843	2	CODE 62 SPLT FLNG CONNECTOR KIT WITH O-RINGS	FWD AND REAR PROPULSION HOSE
6	HC-134911	6	O-RING, CODE 62 CONNECTOR	
7	HC-137891	2	PLATE, CODE 62	
8	HC-137901	4	CODE 62, #16 SPLIT FLANGE KIT	
NS	F-HC8-07C44	8	HC8 7/16 X 2-3/4 PLT	
NS	F-HN8-07C	8	HN8 7/16-14	
NS	F-LW-07	8	LW 7/16 PLT	
<b>HYDRAULIC FASTENERS</b>				
<b>REF.</b>	<b>PART NO.</b>	<b>QTY.</b>	<b>PART NAME</b>	<b>WHERE USED</b>
A	F-SSS-04F04	8	SET SCREW, SOCKET 1/4-28 X 1/4, GRADE 8	MASTER, SLAVE, & MAIN CYLINDERS
B	F-HC8-07C88	4	HC8 7/16-14 X 5-1/2	HYDRO FWD PROPULSION EXTENSION
B	F-LWH-07	4	LW 7/16 HD	HYDRO FWD PROPULSION EXTENSION

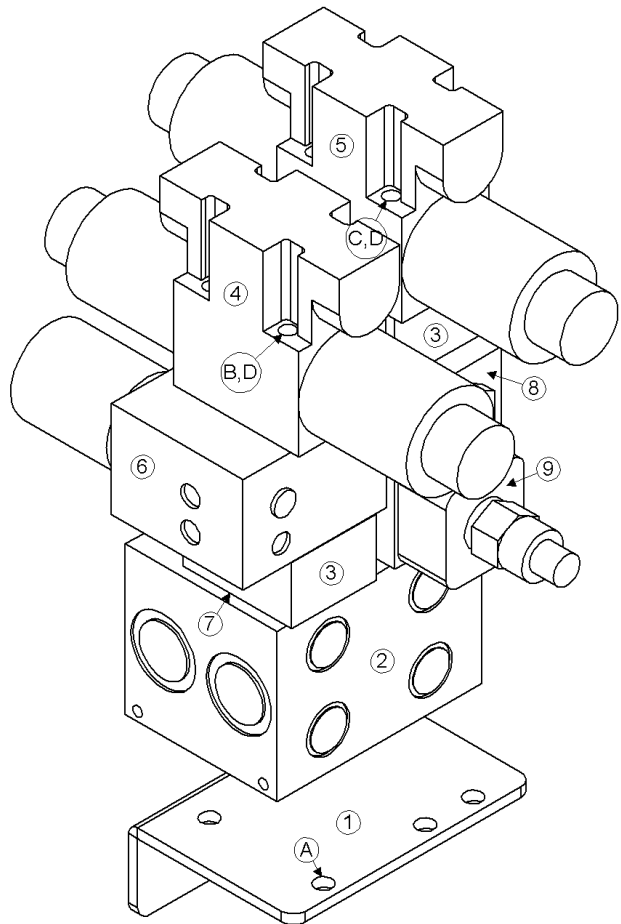
**HYDRAULIC MANIFOLD**

**MANIFOLD ASSEMBLY FOR  
COMBINES WITH FIELD  
TRACKER VALVE**



**\*\*Note:** Be sure to look under the correct headings in both the drawings and the lists to the right, as the components for the two manifold assemblies are different.

**MANIFOLD ASSEMBLY FOR  
COMBINES WITHOUT  
FIELD TRACKER VALVE**



Model 2600 Hillco Leveling System  
For Serial Numbers 2600-1043 thru 2600-1047

<b>MANIFOLD COMPONENTS</b>				
REF.	PART NO.	QTY.	PART NAME	NOTES
<b>FOR COMBINES WITH FIELD TRACKER VALVE</b>				
1	LM-249041	1	HM PLATE, MANIFOLD MOUNT	
2	HC-138861	1	MANIFOLD, SINGLE STATION	
3	HC-101264	1	SHUTTLE ASM, LOAD SENSE	
..	HC-101021	1	CARTRIDGE, LOAD SENSE VALVE	
..	HC-101022	1	BODY, LOAD SENSE VALVE	
NS	HC-102082	1	SEAL KIT, LOAD SENSE SHUTTLE ASM	
4	HC-139781	1	VALVE, DIRECTIONAL CONTROL, LEVELING	
NS	LM-250111	1	ORIFICE, .128, "P" PORT ON DIRECTIONAL CONTROL VALVE	
NS	HC-142731	1	SEAL KIT, DIRECTIONAL CONTROL VALVE	
5	HC-142761	1	SUBPLATE	
6	HC-138841	1	VALVE, HIGH SPEED	
<b>FOR COMBINES WITHOUT FIELD TRACKER VALVE</b>				
1	LM-249041	1	HM PLATE, MANIFOLD MOUNT	
2	HC-138851	1	MANIFOLD, 2 STATION	
3	HC-101264	2	SHUTTLE ASM, LOAD SENSE	
..	HC-101021	2	CARTRIDGE, LOAD SENSE VALVE	
..	HC-101022	2	BODY, LOAD SENSE VALVE	
NS	HC-102082	2	SEAL KIT, LOAD SENSE SHUTTLE ASM	
4	HC-139781	1	VALVE, DIRECTIONAL CONTROL, LEVELING	
NS	LM-250111	1	ORIFICE, .128, "P" PORT IN DIRECTIONAL CONTROL VALVE	
NS	HC-142731	1	SEAL KIT, DIRECTIONAL CONTROL VALVE	
5	HC-139881	1	VALVE, HEADER TRIM DIRECTIONAL CONTROL	
NS	LM-250121	1	ORIFICE, .55, "P" PORT IN DIRECTIONAL CONTROL VALVE	
NS	HC-142731	1	SEAL KIT, DIRECTIONAL CONTROL VALVE	
6	HC-138841	1	VALVE, HIGH SPEED	
7	HC-142761	2	SUBPLATE	
8	HC-138881	1	VALVE, PILOT OPERATED CHECK	
9	HC-138891	1	RELIEF, DUAL	
NS	LM-250131	1	HM TUBE, LOAD SENSE	
<b>MANIFOLD FASTENERS</b>				
A	F-HNF-05C	4	FLHN 5/16-18 SERR	SECURES MANIFOLD TO MNT PLT
B	LM-249691	4	HM STUD, MANIFOLD LEVELING	LEVELING SECTION OF MANIFOLD
C	LM-249701	4	HM STUD, MANIFOLD TRIM	TRIM SECTION OF MANIFOLD
D	HC-139871	8	NUT, STUD, 10-24	TRIM & LEVELING SECTIONS OF MANIFOLD

Model 2600 Hillco Leveling System  
For Serial Numbers 2600-1043 thru 2600-1047

**HYDRAULIC HOSES**

REF.	PART NO.	QTY.	PART NAME	WHERE USED
<b>FOR ALL COMBINES</b>				
NS	LA-139571	1	5/8" 100R2 HOSE 47" #10 FORS X #10 FORS 90°	LEVELING VALVE PRESSURE HOSE
NS	LA-140031	1	5/8" 100R2 HOSE 47" #10 FORS 90° X #12 FORS	LEVELING VALVE PRESSURE HOSE
NS	LA-139581	1	5/8" 100R1 HOSE 35" #12 FORS X #10 FORS 90°	LEVELING VALVE RETURN HOSE
NS	LA-140021	1	5/8" 100R2 HOSE 36" #12 FORS X #12 FORS 90°	PRESSURE HOSE TO CASE MANIFOLD
NS	LA-133102	1	1/4" 100R2 HOSE 54" #6 FORS 90° X #4 FORS	LOAD SENSE LINE
<b>FOR ALL COMBINES WITH STAND-ALONE LEVELING MANIFOLD</b>				
NS	LA-139831	1	3/8" 100R2 HOSE 123" #6 FORS 90° X #6 FORS	LEVELING VALVE PORT A TO BOTTOM TEE REAR
NS	LA-139831	1	3/8" 100R2 HOSE 123" #6 FORS 90° X #6 FORS	LEVELING VALVE PORT B TO TOP TEE REAR
<b>FOR COMBINES WITHOUT FIELD TRACKER VALVE</b>				
NS	LA-139811	1	1/4" 100R2 HOSE 132" #6 FORS X #6 FORS	MASTER ROD PORT TO TRIM CCW PORT
NS	LA-139821	1	1/4" 100R2 HOSE 143" #6 FORS X #6 FORS	MASTER BASE PORT TO TRIM CW PORT
<b>FOR ALL COMBINES WITH LEVELING MANIFOLD INTEGRATED WITH CASE MANIFOLD</b>				
NS	LA-133632	1	3/8" 100R2 HOSE 82" #6 FORS 90° X #6 FORS	LEVELING VALVE PORT A TO BOTTOM TEE REAR
NS	LA-133632	1	3/8" 100R2 HOSE 82" #6 FORS 90° X #6 FORS	LEVELING VALVE PORT B TO TOP TEE REAR
<b>BULKHEAD TO MASTER AND SLAVE CYLINDERS</b>				
NS	LA-133423	1	1/4" 100R2 HOSE 111" #6 FORS X #6 FORS	MASTER CYLINDER BASE TO SLAVE CYLINDER BASE
NS	LA-133433	1	1/4" 100R2 HOSE 133" #6 FORS X #6 FORS	MASTER CYLINDER ROD TO SLAVE CYLINDER ROD
NS	LA-139841	2	3/8" 100R2 HOSE 14-1/4" #6 FORS 90° X #6 FORS	LEFT & RIGHT MAIN ROD TO COUNTERBALANCE PORT #3
NS	LA-139851	1	3/8" 100R2 HOSE 35-3/4" #6 FORS X #6 FORS	LEFT COUNTERBALANCE PORT #2 TO TOP TEE LEFT
NS	LA-139851	1	3/8" 100R2 HOSE 35-3/4" #6 FORS X #6 FORS	RIGHT COUNTERBALANCE PORT #2 TO BOTTOM TEE RIGHT
NS	LA-139861	1	3/8" 100R2 HOSE 40-1/2" #6 FORS 90° X #6 FORS	LEFT COUNTERBALANCE PORT #3 TO BOTTOM TEE LEFT
NS	LA-139861	1	3/8" 100R2 HOSE 40-1/2" #6 FORS 90° X #6 FORS	RIGHT COUNTERBALANCE PORT #3 TO TOP TEE RIGHT
<b>FOR COMBINES WITH FIELD TRACKER VALVE</b>				
NS	LA-139791	1	1/4" 100R2 HOSE 91" #6 FORS X #6 FORS	MASTER ROD PORT TO TRIM CCW PORT
NS	LA-139801	1	1/4" 100R2 HOSE 102" #6 FORS X #6 FORS	MASTER BASE PORT TO TRIM CW PORT
<b>HYDROSTAT</b>				
NS	LA-101809	1	1" 6000 PSI WP 18" WITH 1" CODE 62 FLANGE ENDS STR	
<b>FOR SERIAL NUMBERS PRIOR TO SN JJCO182025</b>				
NS	L26A-102097	1	1" 100R15 HOSE 44" W/ 1" CODE 62 FLANGE ENDS	HYDROSTAT HOSE
NS	L26A-102098	1	1" 100R1 HOSE 46" #16 FORS X #16 FORS	HYDROSTAT HOSE

Model 2600 Hillco Leveling System  
 For Serial Numbers 2600-1043 thru 2600-1047  
**HYDRAULIC HOSES (CONTINUED)**

<b>GREASE</b>				
<b>FOR ALL COMBINES</b>				
NS	LA-133641	1	3/16" R1 GREASE HOSE 15" 1/8 MPT X 1/8 MPT	MASTER BASE TO GREASE BULKHEAD FRONT
NS	LA-133651	1	3/16" R1 GREASE HOSE 52-1/2" 1/8 MPT X 1/8 MPT	MASTER ROD TO GREASE BULKHEAD REAR
NS	LA-133661	1	3/16" R1 GREASE HOSE 28-1/2" 1/8 MPT X 1/8 MPT	MAIN PIVOT BUSHING TO GREASE BULKHEAD UNDER
<b>BRAKES</b>				
<b>FOR ALL COMBINES</b>				
NS	LA-133471	1	1/4" HTB HOSE (7000 PSI) 56" #4 FORS X #4 FORS	FOOT-N-INCH VALVE (ATTENUATOR)
NS	LA-133481	1	3/8" 100R2 HOSE 39" #6 FORS 90 X #8 FORS	RIGHT BRAKE HOSE
NS	LA-133601	1	3/8" 100R2 HOSE 44" #6 FORS 90° X #6 FORS	LEFT BRAKE HOSE (2600)

Model 2600 Hillco Leveling System  
For Serial Numbers 2600-1043 thru 2600-1047

**HYDRAULIC ADAPTERS**

<b>LEVELING AND TRIM MANIFOLDS</b>				
<b>REF.</b>	<b>PART NO.</b>	<b>QTY.</b>	<b>PART NAME</b>	<b>WHERE USED</b>
NS	HA-M-6MF6FF	1	#6 ORS SWIVEL NUT RUN TEE	LOAD SENSE LINE AT STEERING PRIORITY VALVE
NS	HA-M-10FF10MF	1	#10 ORS SWIVEL NUT RUN TEE	PRESSURE HOSE AT STEERING PRIORITY VALVE
NS	HA-M-12FF12MF	2	#12 ORS SWIVEL NUT RUN TEE	RETURN HOSE AT RETURN BLOCK & PRESSURE HOSE AT PRIORITY VALVE
NS	HA-A-10MO	2	#10 MORB ALLEN HEAD PLUG	"P" & "T" PORTS
NS	HA-L-10MF10MO	2	#10 MORS X #10 MORB 90°	"P" & "T" PORTS
NS	HA-S-6MF8MO	2	#6 MORS X #8 MORB STR	"A" & "B" LEVELING PORTS
NS	HA-B-6MF6MF	2	#6 MORS UNION TEE	REAR OF OC BETWEEN HOSE CLAMPS
NS	HA-L-6MF8MO	1	#6 MORS X #8 MORB 90°	LEVELING MANIFOLD PORT A
NS	HA-S-6MF8MO	1	#6 MORS X #8 MORB STR	LEVELING MANIFOLD PORT B
NS	HA-L-6FF6MF	1	#6 FORS X #6 MORS 90°	LEVELING MANIFOLD PORT B
NS	HA-L-6MF6MO	2	#6 MORS X #6 MORB 90°	FIELD TRACKER VALVE CW AND CCW PORTS
<b>FOR COMBINES WITHOUT FIELD TRACKER VALVE</b>				
NS	HA-S-6MF8MO	2	#6 MORS X #8 MORB STR	"A" & "B" TRIM PORTS
NS	HA-T-4MF4MO	1	#4 MORB X #4 MORS STR THREAD RUN TEE	LOAD SENSE SHUTTLE
NS	HA-S-4MF4MO	1	#4 MORB X #4 MORS STR	LOAD SENSE SHUTTLE
NS	HC-139901	2	#4 ORS-TF NUT	STEEL LOAD SENSE LINE
NS	HC-139911	2	#4 ORS-TF FERRULE	STEEL LOAD SENSE LINE
NS	HC-139921	2	#4 ORS-TF SLEEVE	STEEL LOAD SENSE LINE
<b>FOR COMBINES WITH FIELD TRACKER VALVE</b>				
NS	HA-L-4MF4MO	1	#4 MORB X #4 MORS 90°	LOAD SENSE SHUTTLE
NS	LA-L-6MF6MO	2	#6 MORS X #6 MORB 90°	FIELD TRACKER CW AND CCW PORTS
<b>MAIN CYLINDERS AND COUNTERBALANCE VALVES</b>				
NS	HA-Q-6MF6MO	2	#6 MORB X #6 MORS STR THREAD BRANCH TEE	COUNTERBALANCE PORT #3 LEFT AND RIGHT
NS	HA-F-6MF6MO	2	#6 MORB X #6 MORS 45°	COUNTERBALANCE PORT #2 LEFT AND RIGHT
NS	HA-S-8MO6FO	2	#8 MORB X #6 FORB STR	LEFT AND RIGHT MAIN CYLINDER BASE
NS	HA-L-6MO6MO	2	#6 MORB X #6 MORB 90°	LEFT AND RIGHT COUNTERBALANCE VALVE PORT #1 TO MAIN CYL BASE
NS	HA-L-6MF8MO	2	#6 MORS X #8 MORB 90°	LEFT AND RIGHT MAIN CYLINDER ROD
<b>MASTER AND SLAVE CYLINDERS</b>				
NS	HA-Q-6MF6MO	2	#6 MORS X #6 MORB STR THREAD BRANCH TEE	MASTER BASE AND ROD PORTS
NS	HA-L-6MF6MO	2	#6 MORS X #6 MORB 90°	SLAVE BASE AND ROD PORTS
<b>GREASE</b>				
NS	HC-133891	1	ZERK, GREASE 1/8 MPT STR	TRANSITION MAIN PIVOT PIN
NS	HC-135771	1	1/4-28 MALE X 1/8 FPT 90°	MASTER CYLINDER BASE
NS	HC-135761	1	1/4-28 MALE X 1/8 FPT 45°	LEVELING CYLINDERS BASE
NS	HC-138011	3	ZERK, GREASE 1/4-28 STRAIGHT	ALL GREASE HOSES
NS	HA-NJ-2FN	3	1/8" NPSM BULKHEAD LOCKNUT	BULKHEAD CONNECTOR
NS	HA-L-2FP2MP	3	1/8 MPT 90 STREET EL	BULKHEAD CONNECTOR
NS	HC-135881	1	1/4-28 MALE X 1/8 FPT STR	MASTER CYLINDER ROD
NS	HA-S-2MN2FP	3	1/8" NPSM X 1/8" FPT BULKHEAD CONNECTOR	GREASE BULKHEAD MOUNT



Model 2600 Hillco Leveling System  
For Serial Numbers 2600-1043 thru 2600-1047

**9 MISCELLANEOUS**

<b>DECALS AND LITERATURE</b>				
<b>REF.</b>	<b>PART NO.</b>	<b>QTY.</b>	<b>PART NAME</b>	<b>NOTES</b>
NS	LL20-100773	2	DECAL, GRAY	HILLCO 2000 LEVELING SYSTEM
NS	LL20-100782	1	LABEL, SAFETY	CAUTION LEVELING SYSTEM CAB
NS	LL20-100783	6	LABEL, SAFETY	DANGER CRUSHING HAZARD
NS	LL20-100784	2	LABEL, SAFETY	DANGER PINCH POINT
NS	LL20-100785	1	LABEL, SAFETY	CAUTION MOVING STEP
NS	LL20-100786	1	LABEL, SAFETY	WARNING ELECTRONIC CRUSHING HAZARD
NS	LL20-100787	2	LABEL, SAFETY	CAUTION LEVELING SYSTEM HAZARD
NS	LL20-100788	3	LABEL, SAFETY	DANGER HYDRAULIC HAZARD
NS	LL-133731	1	LABEL, GREASE 10 HRS	REAR AXLE
NS	LL-133731	1	LABEL, GREASE 10 HRS	RH OVERCARRIAGE
NS	LL-133731	1	LABEL, GREASE 10 HRS	LH OVERCARRIAGE
NS	LL-133731	1	LABEL, GREASE 10 HRS	TT PVT PIN
NS	LL-133741	1	LABEL, GREASE 50 HRS	RH TRANS SIDE PLT
NS	LL-133741	1	LABEL, GREASE 50 HRS	HDR LIFT CYL MNT (MAIN PVT PIN)
NS	LL-133731	2	LABEL, GREASE 10 HRS	MAIN LEV CYL BOTTOM (RH AND LH)
NS	D-010223DJC01	1	MANUAL, OPERATOR'S	
NS	D-010310DJC08	1	MANUAL, INSTALLATION	
NS	D-10227DJC01	1	MANUAL, FACTORY INSTALLATION	
NS	D-060928ADL01	1	MANUAL, PARTS	
<b>FOR FACTORY AND DEALER INSTALL WITH FIELD TRACKER</b>				
NS	D-010621LJH01	1	AUTO DISABLE RELAY KIT INSTRUCTIONS	
<b>FOR FACTORY INSTALL ONLY</b>				
NS	D-031111DJC01	1	INSTRUCTION SHEET	
<b>HOSE CLAMPS AND FASTENERS</b>				
NS	MC-101342	2	CLAMP R/C 1/4H 1-1/2T	LEFT SIDE OVERCARRIAGE
NS	MC-101342	2	CLAMP R/C 1/4H 1-1/2T	AXLE FRONT CORNER GUSSET
NS	MC-101343	1	CLAMP R/C 1/4H 2-7/16T	RIGHT SIDE OVERCARRIAGE
NS	MC-101342	1	CLAMP R/C 1/4H 1-1/2T	TRANSITION RIGHT UP-RIGHT
NS	F-HC5-04C12	5	HC5 1/4-20 x 3/4	HOSE CLAMPS
NS	F-HNF-04C	5	HN 1/4-20, FLNG, SERR	HOSE CLAMPS
NS	F-FW-04	5	FW 1/4	HOSE CLAMPS
NS	HC-139431	2	BEHRINGER TWIN CLAMP .750 DIAMETER	ON OC HOSES BETWEEN CYLINDERS AND HOSES TO LEVELING VALVE
NS	HC-139451	1	BEHRINGER TWIN COVER PLATE (FOR .750)	ON OC HOSES BETWEEN CYLINDERS AND HOSES TO LEVELING VALVE
NS	HC-139461	1	BEHRINGER TWIN BOLT (FOR .750)	ON OC HOSES BETWEEN CYLINDERS AND HOSES TO LEVELING VALVE
NS	HC-139471	1	BEHRINGER STACK BOLT (FOR .750)	ON OC HOSES BETWEEN CYLINDERS AND HOSES TO LEVELING VALVE
NS	HC-139481	1	BEHRINGER TWIN CLAMP .620 DIAMETER	ON OC HOSES TO TRIM VALVE
NS	HC-139501	1	BEHRINGER TWIN COVER PLATE (FOR .620)	ON OC HOSES TO TRIM VALVE
NS	HC-139511	1	BEHRINGER TWIN BOLT (FOR .620)	ON OC HOSES TO TRIM VALVE

Model 2600 Hillco Leveling System  
For Serial Numbers 2600-1043 thru 2600-1047

**10 PART NUMBER INDEX**

PART NUMBER	PAGE NUMBER	PART NUMBER	PAGE NUMBER	PART NUMBER	PAGE NUMBER
D-010223DJC01	9-1	F-HC5-05C12	7-2	F-LWH-20M	3-2
D-010310DJC08	9-1	F-HC5-06C12	2-6	F-MB-12WR18	2-6
D-010621LJH01	9-1	F-HC5-06C14	3-2	F-MB-14NR40	2-6
D-031111DJC01	9-1	F-HC5-06C20	2-6	F-MB-18NR18	7-2
D-060928ADL01	9-1	F-HC5-08C104	2-4	F-MB-18NR24	4-2
D-10227DJC01	9-1	F-HC5-08C16	3-2	F-PCL-10X24	2-6
EC-100002	7-2	F-HC5-08C176	2-4	F-PCT-02X16	2-6
EC-100003	7-2	F-HC5-08C20	2-6	F-PCT-05X48	2-4
EC-100008	7-4	F-HC5-08C32	2-6	F-PHM-#10C28	7-2
EC-100009	7-2, 7-4	F-HC5-08C48	3-2	F-PHMS-06C24	6-2
EC-100010	7-2, 7-4	F-HC5-12C88	5-2	F-PHMS-06C32	6-2
EC-100164	7-4	F-HC8-07C44	8-2	F-PHMS-06C40	6-2
EC-100165	7-4	F-HC8-07C88	8-2	F-PHMS-06C56	6-2
EC-100549	7-4	F-HC8-08C36	4-2	F-PR-06X40	6-2
EC-100550	7-4	F-HC8-08C40	3-2	F-SHC-20M065E	3-2
EC-100551	7-4	F-HC8-08C44	2-6	F-SSS-04F04	8-2
EC-100552	7-4	F-HC8-08C48	4-2	F-SSS-06C08	2-4, 2-6
EC-100553	7-4	F-HC8-08F20	2-4	F-THC-#10C08	7-2
EC-100554	7-4	F-HC8-10C24	3-2	F-THM-06C16	2-6
EC-100557	7-2	F-HC8-10C32	2-6, 3-2	F-THMS-04C08	2-6, 7-2
EC-100628	7-4	F-HC8-10C36	3-2	F-THMS-04C12	7-2
EC-100692	7-2	F-HC8-10C80	2-6	F-THMS-05C16	2-6
EC-100693	7-4	F-HC8-12C112	5-2	F-THMS-06C16	6-2, 7-2
EC-101874	7-2	F-HC8-12C120	5-2	F-UDS-#7X06	3-2
EC-101876	7-2	F-HC8-12C136	5-2	HA-A-10MO	8-7
EC-101877	7-2	F-HC8-12C144	5-2	HA-B-6MF6MF	8-7
EC-138731	7-2	F-HC8-12C160	5-2	HA-F-6MF6MO	8-7
EC-138741	7-2	F-HC8-12C56	5-2	HA-L-10MF10MO	8-7
EC-138751	7-2	F-HC8-12C72	5-2	HA-L-2FP2MP	8-7
EC-138761	7-2	F-HC8-12C88	5-2	HA-L-4MF4MO	8-7
EC-138771	7-2	F-HC8-12C96	5-2	HA-L-6FF6MF	8-7
EC-138781	7-2	F-HC8-16C44	4-2	HA-L-6MF6MO	8-7
EC-139301	7-4	F-HC8-16C72	4-2	HA-L-6MF8MO	8-7
EC-139311	7-4	F-HC8-20C40	2-4	HA-L-6MO6MO	8-7
EC-139321	7-4	F-HN5-06C	2-6	HA-M-10FF10MF	8-7
EC-139331	7-4	F-HN5-08C	2-6	HA-M-12FF12MF	8-7
EC-141891	7-2	F-HN8-07C	8-2	HA-M-6MF6FF	8-7
EC-141901	7-2	F-HN8-12C	5-2	HA-NJ-2FN	8-7
EC-142121	7-2	F-HNF-#10C	7-2	HA-Q-6MF6MO	8-7
ET-QC-20	7-4	F-HNF-04C	2-6, 7-2, 9-1	HA-S-2MN2FP	8-7
ET-SP-20	7-4	F-HNF-05C	2-6, 7-2, 8-4	HA-S-4MF4MO	8-7
ET-ST-20#10	7-4	F-HNF-06C	2-6, 6-2, 7-2	HA-S-6MF8MO	8-7
ET-ST-20#6	7-4	F-HNF-12C	5-2	HA-S-8MO6FO	8-7
ET-ST-2004	7-4	F-HNN-08C	3-2	HA-T-4MF4MO	8-7
ET-ST-2008	7-4	F-HNN-10C	2-6	HC-100706	2-2, 8-2
F-CB-06C20	2-6	F-HNN-12C	2-6	HC-101021	8-4
F-CB-10C40	2-6	F-HNS-05F	2-2, 2-6	HC-101022	8-4
F-EB-04C20	2-6	F-HNS-06C	2-6	HC-101264	8-4
F-FHS-05F10	2-6	F-HNS-08C	2-4, 3-2, 4-2	HC-101841	3-2, 8-2
F-FHS-05F20	2-2, 2-6	F-HNS-10C	2-6, 3-2	HC-101842	3-2, 8-2
F-FW-04	9-1	F-HNS-16C	4-2	HC-101843	8-2
F-FW-06	6-2	F-HNS-20C	2-4	HC-102082	8-4
F-FW-10	3-2	F-HNSF-08C	2-6	HC-133891	8-7
F-FW-12	5-2	F-LW-06	2-6, 3-2	HC-134191	2-2, 8-2
F-FWH-06	2-6	F-LW-07	8-2	HC-134201	8-2
F-FWH-08	3-2	F-LW-08	2-6, 3-2	HC-134241	8-2
F-FWH-10	2-6, 3-2	F-LW-08A	2-4	HC-134911	8-2
F-FWH-12	2-6, 5-2	F-LW-12A	5-2	HC-135761	8-7
F-HC-20M065E	3-2	F-LWE-06	7-2	HC-135771	8-7
F-HC5-04C12	9-1	F-LWH-07	8-2	HC-135881	8-7

Model 2600 Hillco Leveling System  
 For Serial Numbers 2600-1043 thru 2600-1047  
**PART NUMBER INDEX (CONTINUED)**

PART NUMBER	PAGE NUMBER	PART NUMBER	PAGE NUMBER	PART NUMBER	PAGE NUMBER
HC-137891	8-2	LA-220651	2-4	LM-226061	4-2
HC-137901	8-2	LA-240121	2-4	LM-226171	3-2
HC-138011	8-7	LA-220661	2-4	LM-226291	3-2
HC-138841	8-4	LA-225411	2-2	LM-226532	2-2, 2-4
HC-138851	8-4	LA-226301	3-2	LM-226831	2-2
HC-138861	8-4	LA-226311	3-2	LM-226841	2-2
HC-138881	8-4	LA-226852	2-2	LM-226961	2-4
HC-138891	8-4	LA-226901	5-2	LM-230811	6-2
HC-138901	3-2, 8-2	LA-226971	6-2	LM-230821	6-2
HC-139161	8-2	LA-226991	4-2	LM-234101	4-2
HC-139171	8-2	LA-227001	6-2	LM-234152	2-2
HC-139431	9-1	LA-227101	2-2	LM-234221	2-2
HC-139451	9-1	LA-227223	3-2	LM-235481	2-4
HC-139461	9-1	LA-227233	3-2	LM-238091	2-2
HC-139471	9-1	LA-228761	4-2	LM-243792	2-2
HC-139481	9-1	LA-229071	2-2, 3-2	LM-243801	2-2
HC-139501	9-1	LA-230551	3-2	LM-243831	2-2
HC-139511	9-1	LA-234251	2-2	LM-243841	2-2
HC-139781	8-4	LA-235472	7-2, 7-4, 7-6	LM-244471	2-2, 2-4
HC-139871	8-4	LA-236731	7-2, 7-4	LM-245431	4-2
HC-139881	8-4	LA-238131	6-2	LM-248981	2-6
HC-139901	8-7	LA-239402	7-4, 7-6	LM-249041	8-4
HC-139911	8-7	LA-243691	2-2	LM-249691	8-4
HC-139921	8-7	LA-243711	2-2	LM-249701	8-4
HC-140011	8-2	LA-243821	2-2	LM-250111	8-4
HC-140361	8-2	LA-245191	2-2	LM-250121	8-4
HC-142731	8-4	LA-249051	7-6	LM-250131	8-4
HC-142761	8-4	LA-249061	7-6	LP-103871	3-2
L26A-102097	8-5	LA-249071	7-6	LP-104791	2-2
L26A-102098	8-5	LA-249081	7-6	LP-117921	6-2
LA-101809	8-5	LA-249091	7-6	LP-213242	2-2
LA-133102	8-5	LA-249101	7-6	LP-213252	2-2
LA-133423	8-5	LA-249111	7-2	LP-218371	2-2
LA-133433	8-5	LA-255941	3-2	LP-219392	2-2
LA-133471	8-6	LA-L-6MF6MO	8-7	LP-219402	2-2
LA-133481	8-6	LL-133731	9-1	LP-249121	3-2, 7-2
LA-133601	8-6	LL-133741	9-1	LP-249181	7-2
LA-133632	8-5	LL20-100773	9-1	LS-212701	2-2
LA-133641	8-6	LL20-100782	9-1	MC-100237	2-2
LA-133651	8-6	LL20-100783	9-1	MC-100239	2-2
LA-133661	8-6	LL20-100784	9-1	MC-100240	2-2
LA-139571	8-5	LL20-100785	9-1	MC-100548	2-2
LA-139581	8-5	LL20-100786	9-1	MC-100710	6-2
LA-139791	8-5	LL20-100787	9-1	MC-100760	2-2
LA-139801	8-5	LL20-100788	9-1	MC-100762	2-2
LA-139811	8-5	LL20-101868	7-2	MC-101332	2-2
LA-139821	8-5	LL20-101869	7-2	MC-101333	2-2
LA-139831	8-5	LM-207011	2-2	MC-101339	2-2
LA-139841	8-5	LM-207631	7-2	MC-101342	9-1
LA-139851	8-5	LM-212561	5-2	MC-101343	9-1
LA-139861	8-5	LM-213201	2-2	MC-101838	2-2
LA-140021	8-5	LM-213291	2-2	MC-101839	2-2
LA-140031	8-5	LM-214941	6-2	MC-133711	5-2
LA-214931	6-2	LM-214951	6-2	MC-135491	2-2
LA-217651	4-2	LM-218501	2-4	MC-135501	2-2
LA-217691	3-2	LM-219501	7-2	MC-135511	2-2
LA-219511	6-2	LM-221601	2-2	MC-136921	2-2, 2-4
LA-220631	2-4	LM-225522	2-2	MC-137441	2-2
LA-220641	2-4	LM-225531	2-2	MC-137491	3-2
LA-240111	2-4	LM-225541	2-2	MC-137511	3-2