

Model 2950
Hillside Leveling System
Parts Manual

SN 2950-1007
D-060915ADL01A





2950 Hillside Leveling System
for 9500, 9510, CTS, CTS II, 9650 CTS,
and 9660 CTS John Deere Combines

TABLE OF CONTENTS

1 GENERAL INFORMATION	1-3
Serial Number Location.....	1-3
Text Format and Illustrations.....	1-3
Abbreviations.....	1-3
Right and Left Identification.....	1-3
Parts Orders.....	1-3
2 TRANSITION	2-1
Transition Fasteners.....	2-3
Radial Pin Slip Clutch.....	2-5
3 CARRIAGE	3-1
Carriage Fasteners.....	3-3
4 Y-BRACE	4-1
5 DROP AXLE	5-1
6 LADDER	6-1
7 ELECTRICAL COMPONENTS	7-3
Electrical Connectors.....	7-5
Electrical Cables.....	7-7
8 HYDRAULICS	8-1
Hydraulic Manifold.....	8-3
Hydraulic Pump.....	8-5
Hydraulic Hoses.....	8-7
Hydraulic Hoses (Continued).....	8-8
Hydraulic Adapters.....	8-9
Hydraulic Adapters (Continued).....	8-10
9 MISCELLANEOUS	9-1
10 PART NUMBER INDEX	10-1
Part Number Index (Continued).....	10-2

Model 2950 Hillco Leveling System
For Serial Number 2950-1007

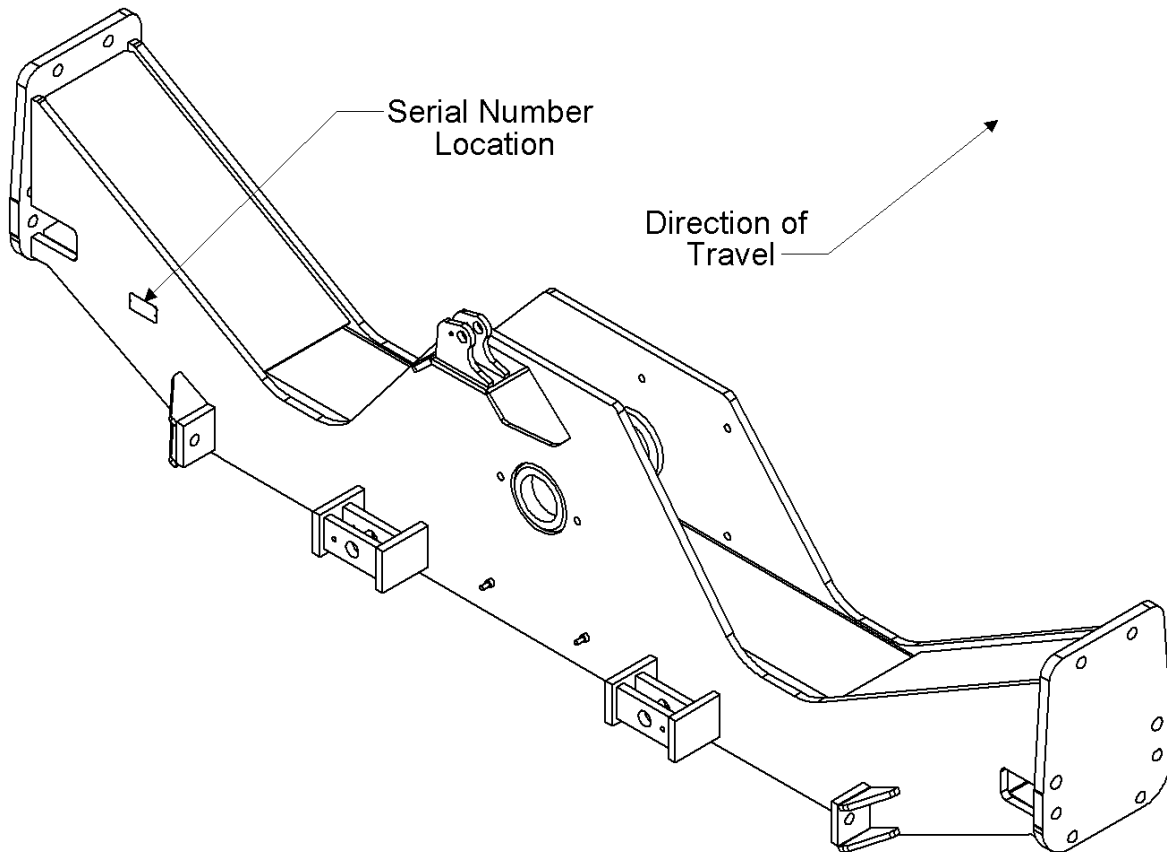
Hillco Technologies, Inc.
107 1st Avenue
Nezperce Id. 83543

Fax	208.937.2280
Phone	208.937.2461
Toll Free	800.937.2461

www.hillcotechnologies.com

1 GENERAL INFORMATION

SERIAL NUMBER LOCATION



TEXT FORMAT AND ILLUSTRATIONS

The arrangement of this parts catalog is for easy identification of parts. All parts are illustrated in exploded views in proper relation to each other. Some diagrams refer to other pages for further information. Reference numbers used in the illustrations refer to line numbers in the part lists. The part lists appear to the right of all diagrams and correspond with those diagrams. Included in the part lists, along with the reference numbers are part numbers, part descriptions and the quantity of the part required per leveling system.

ABBREVIATIONS

SN "Serial Number" refers to the serial number given to each leveling system (by Hillco Technologies), as well as the serial number given to the combine (by the specific combine manufacturer) the leveling system is installed upon. This abbreviation is used interchangeably in both instances. Each model 2950 Leveling System uses the following serial number format: 2950-XXXX (sequential numbers).

ASM "Assembly" refers to a whole grouping of parts (usually shown in the diagram corresponding with the page where "ASM" is shown unless otherwise noted). Some assemblies have parts that are sold separately, however some must be purchased as a single unit. Hillco Product Specialists will be able to assist you with any questions.

NS "Not Shown" refers to a part that is not depicted in the illustration.

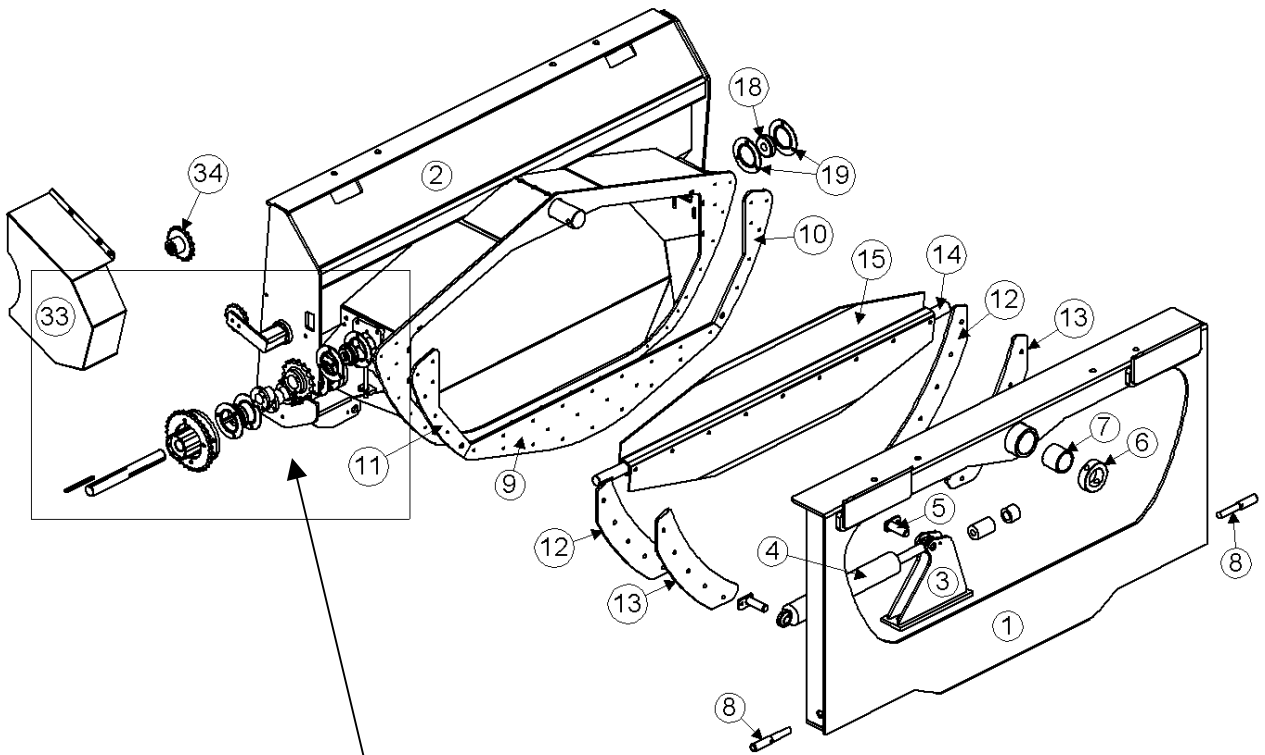
RIGHT AND LEFT IDENTIFICATION

The reference to right-hand and left-hand in this catalog is identified by the operator sitting in the operator's seat, looking toward the front of the machine (in normal forward travel).

PARTS ORDERS

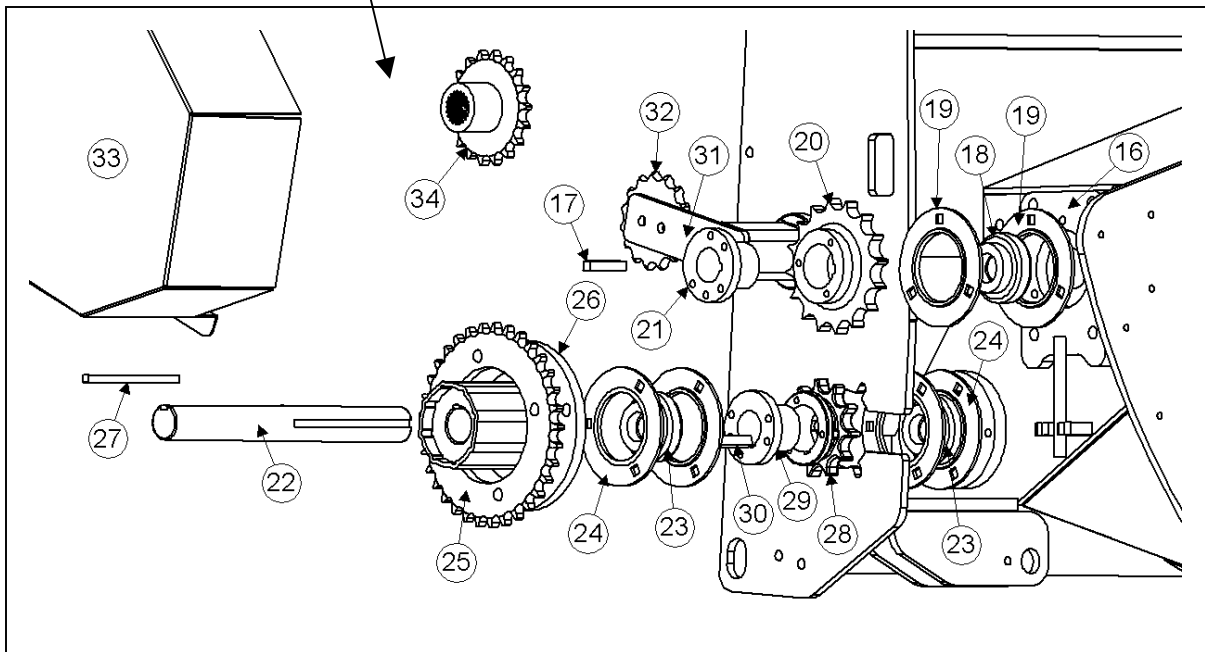
Orders must specify product model, serial number, correct part number, complete description, quantity required, method of shipment, shipping address, and billing address.

2 TRANSITION



SEE PAGE 2-3 FOR
TRANSITION FASTENERS

TRANSITION DRIVE COMPONENT DETAIL

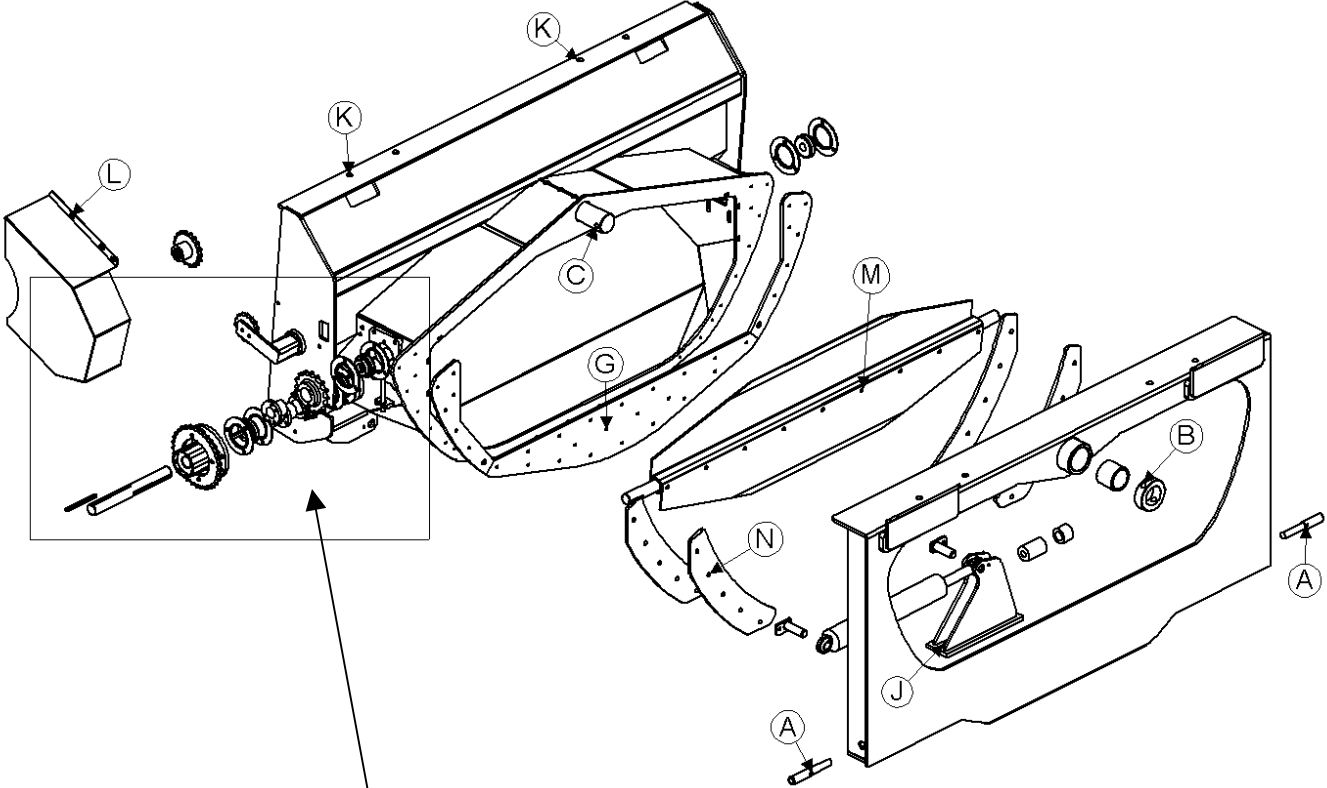


Model 2950 Hillco Leveling System
For Serial Number 2950-1007

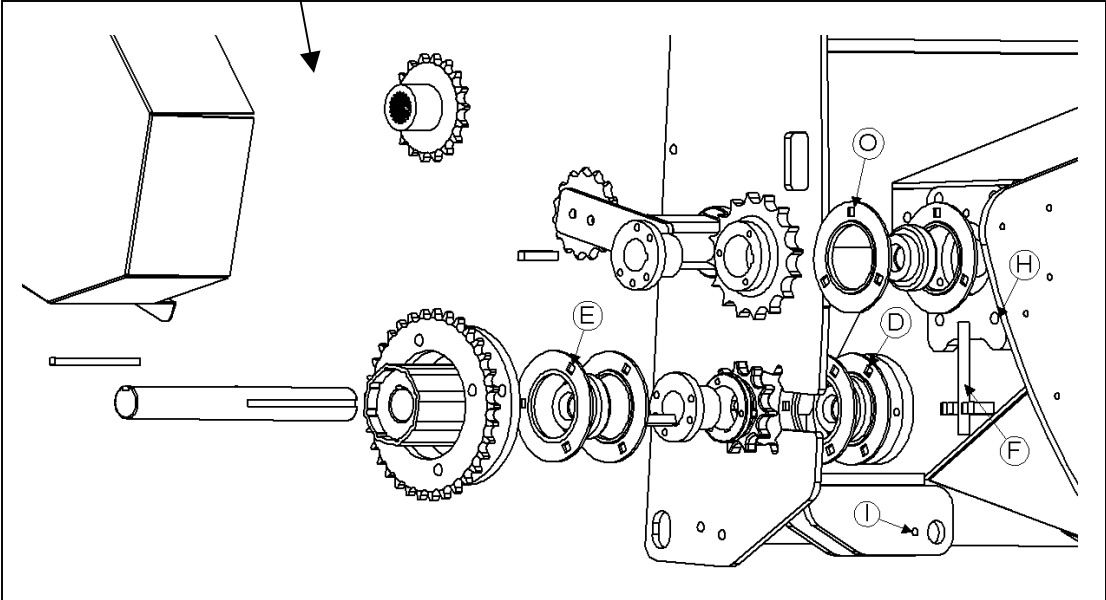
TRANSITION				
REF.	PART NO.	QTY.	PART NAME	NOTES
1	LA-228893	1	TA ADAPTER ASM	
2	LA-234952	1	TT THROAT ASM	
3	LA-229022	1	TM MOUNT ASM, ROD	
4	HC-100706	1	CYLINDER, SLAVE	SEE HYDRAULICS PAGE
NS	HC-134191	1	SEAL KIT, SLAVE CYLINDER	
5	LA-229071	4	TM PIN ASM, TRIM CYLINDER	
6	LM-226841	1	TM COLLAR, PIVOT	
7	LTP-241721	1	BUSHING, GRAPHITE MICARTA	
8	LM-229192	2	TM ROD, LOCK	
NS	MC-135531	2	SPRING, COMPRESSION	
9	LM-229152	1	TM PLATE, WEAR BOTTOM	
10	LM-229161	1	TM PLATE, WEAR LH	
11	LM-229171	1	TM PLATE, WEAR RH	
12	LM-249861	2	TM PLT, BACKING	
13	LP-249871	2	TM UHMW, BACKING	
BEATER SHAFT				
14	LA-249611	1	TB ASM, SHAFT	
15	LM-238341	2	TB PADDLE, METAL	
16	LA-229051	2	TM MOUNT ASM, BEATER	
17	LS-212701	1	TM KEY, BEATER DRIVE	
18	MC-100548	2	BEARING INSERT, 1-7/16, NON-RELUBE	
19	MC-101339	2	FLANGETTES, RND BEARING (PAIR)	
20	MC-135501	1	SPROCKET, 16T 80P TAPER BORE HRD	
21	MC-135511	1	HUB, SPLIT TAPER 1-7/16	
NS	LP-232162	1	TM CHAIN, 28 PIN 80P	
NS	MC-139341	1	LINK, CONNECTING, 80P	
NS	MC-139351	1	LINK, OFFSET, 80P	
TRANSITION THROAT JACK SHAFT				
22	LM-229142	1	TM SHAFT, JACK	
23	MC-100548	2	BEARING INSERT, 1-7/16, NON-RELUBE	
24	MC-101339	2	FLANGETTES, RND BEARING (PAIR)	
25	LM-226532	1	TM SPROCKET, RADIAL SLIP CLUTCH	SEE RADIAL PIN SLIP CLUTCH PAGE
26	MC-136921	1	RADIAL PIN SLIP CLUTCH	
27	LS-244471	1	TM KEY, RADIAL PIN SLIP CLUTCH	
28	MC-135491	1	SPROCKET, 11T 80P TAPER BORE HRD	
29	MC-135511	1	HUB, SPLIT TAPER 1-7/16	
30	LS-212701	1	TM KEY, BEATER DRIVE	
NS	LP-255131	1	TM CHAIN, 72 PIN 60P	
NS	MC-139361	1	LINK, CONNECTING, 60P	
NS	MC-139371	1	LINK, OFFSET, 60P	
TENSIONER				
31	MC-100546	1	TENSIONER	
32	MC-100237	1	SPROCKET, IDLER, 15T 60P 5/8B	
NS	MC-139241	1	TENSIONER HARDWARE KIT	
FEEDER HOUSE BEATER DRIVE				
33	LM-236232	1	TM SHIELD, DRIVE	
34	LA-243071	1	TM ASM, DRIVE SPROCKET	
NS	MC-142001	2	1 PC SPLIT COLLAR 1-3/8" BORE	

Model 2950 Hillco Leveling System
For Serial Number 2950-1007

TRANSITION FASTENERS



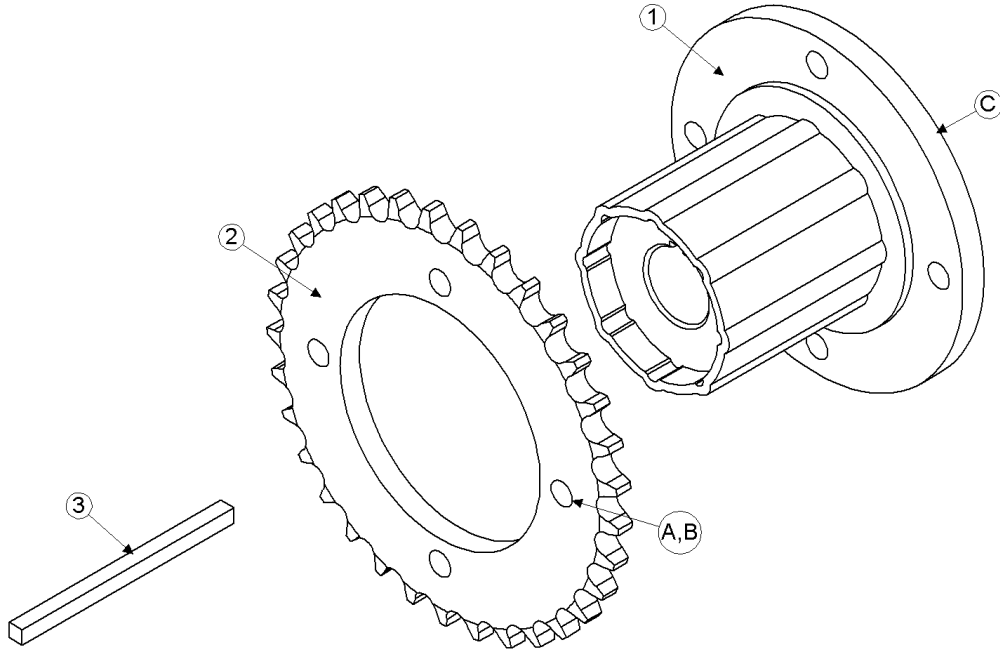
TRANSITION FASTENERS DRIVE COMPONENT DETAIL



Model 2950 Hillco Leveling System
For Serial Number 2950-1007

TRANSITION FASTENERS				
REF.	PART NO.	QTY.	PART NAME	WHERE USED
A	F-SHC-10M070F	2	SHCS-8.8 M10 X 1.50 X 70	THA HEADER LOCK
B	F-HC-16M120E	1	HC-10.9 M16 X 2.00 X 120	MAIN PIVOT PIN COLLAR
B	F-HNS-16ME	1	HN-10.9 M16 X 2.00 STV	MAIN PIVOT PIN COLLAR
C	F-MB-14NR40	3	MACH BUSH 14 GA NR 2-1/2" ID	MAIN PIVOT PIN
D	F-HCF-10M020E	3	FLHC-10.9 M10 X 1.50 X 20	INNER 3-BOLT JS BEARING
E	F-CB-10M030F	3	CARR-8.8 M10 X 1.50 X 30	OUTER 3-BOLT JS BEARING
E	F-HNF-10MF	3	FLHN-8.8 M10 X 1.50	OUTER 3-BOLT JS BEARING
F	F-FWH-08	4	FW 1/2 HD YELLOW	BEATER BRNG TAKE-UP BLT
F	F-HNJ-12MF	4	HN-8.8 M12 X 1.75 JAM	BEATER BRNG TAKE-UP BLT
G	F-FHS-8M015E	29	FHSC-10.9 M8 X 1.25 X 15	TT FACE PLATE
H	F-CB-12M040F	8	CARR-8.8 M12 X 1.75 X 40	TT BEATER BRNG MNT PLT
H	F-HNF-12MF	8	FLHN-8.8 M12 X 1.75	TT BEATER BRNG MNT PLT
I	F-HCF-10M020F	2	FLHC-8.8 M10 X 1.50 X 20	SLAVE CYL MNT PIN
J	F-HC-16M050E	3	HC-10.9 M16 X 2.00 X 50	ROD MNT
J	F-HNS-16ME	3	HN-10.9 M16 X 2.00 STV	ROD MNT
K	F-HCF-12M040E	4	FLHC-10.9 M12 X 1.75 X 40	TRANSITION MNT
K	F-HCF-16M040E	4	FLHC-10.9 M16 X 2.00 X 40	TRANSITION MNT
L	F-HNF-10MF	2	FLHN-8.8 M10 X 1.50	TM DRIVE SHIELD
L	F-HCF-10M020F	2	FLHC-8.8 M10 X 1.50 X 20	TM DRIVE SHIELD
M	F-HNSF-12ME	9	FLHN-10.9 M12 X 1.75 STV FLNG	BEATER PADDLES
M	F-HCF-12M080E	9	FLHC-10.9 M12 X 1.75 X 80	BEATER PADDLES
N	F-HCF-12M040E	10	FLHC-10.9 M12 X 1.75 X 40	BACKING PLATES
O	F-HCF-10M020F	6	FLHC-8.8 M10 X 1.50 X 20	TT BEATER BRNG MNT PLT

Model 2950 Hillco Leveling System
For Serial Number 2950-1007
RADIAL PIN SLIP CLUTCH

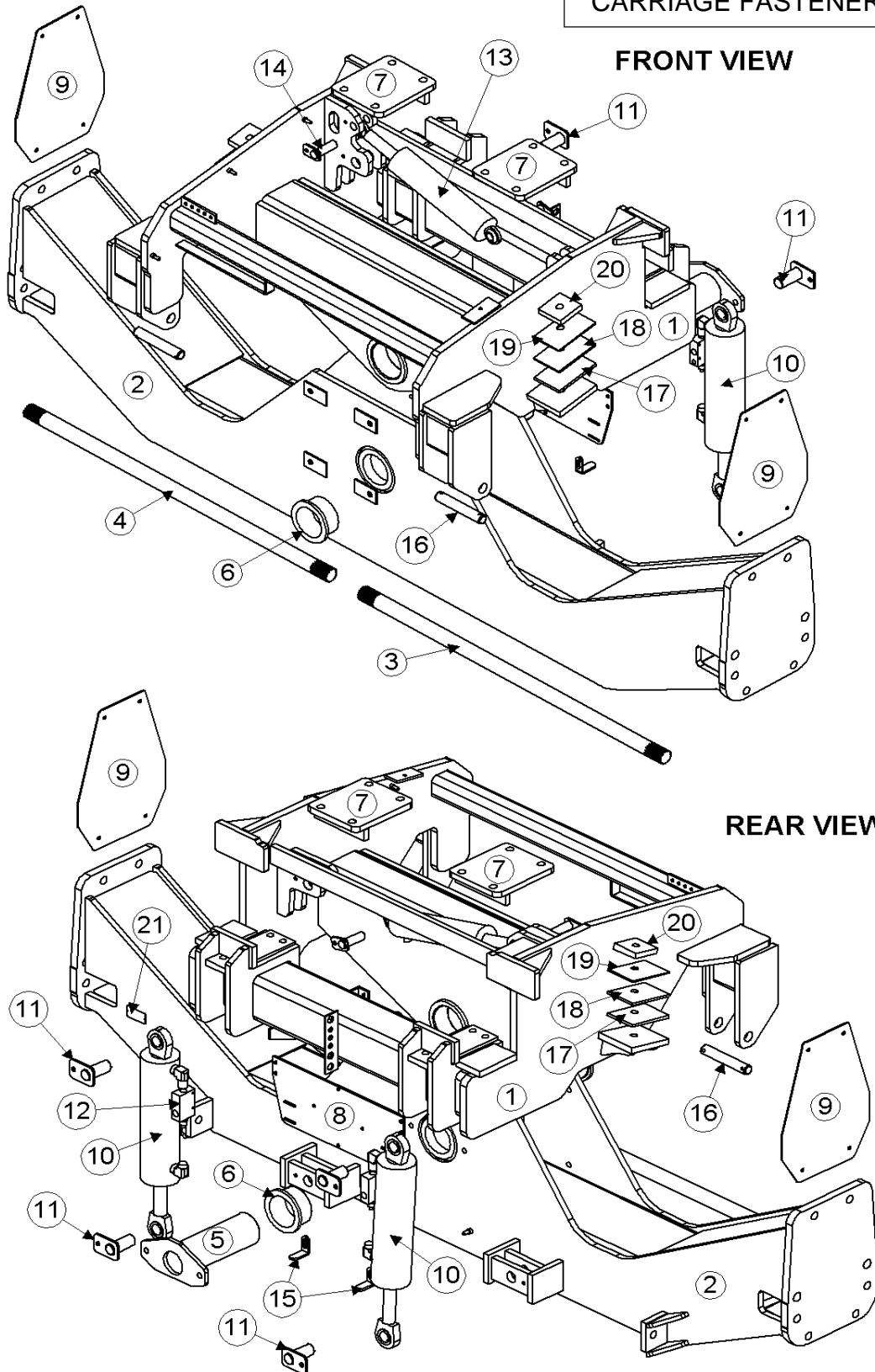


Model 2950 Hillco Leveling System
 For Serial Number 2950-1007

RADIAL PIN SLIP CLUTCH COMPONENTS				
REF.	PART NO.	QTY.	PART NAME	NOTES
1	LM-226532	1	TM SPROCKET, RADIAL SLIP CLUTCH	
2	MC-136921	1	RADIAL PIN SLIP CLUTCH	
3	LS-244471	1	TM KEY, RADIAL PIN SLIP CLUTCH	
RADIAL PIN SLIP CLUTCH FASTENERS				
REF.	PART NO.	QTY.	PART NAME	WHERE USED
A	F-HC8-08F20	4	HC8 1/2-20 X 1-1/4	
B	F-LW-08A	4	LW 1/2 HD	
C	F-SSS-06C08	2	SCREW, SOCKET SET 3/8-16 X 1/2	

3 CARRIAGE

SEE PAGE 3-3 FOR
CARRIAGE FASTENERS



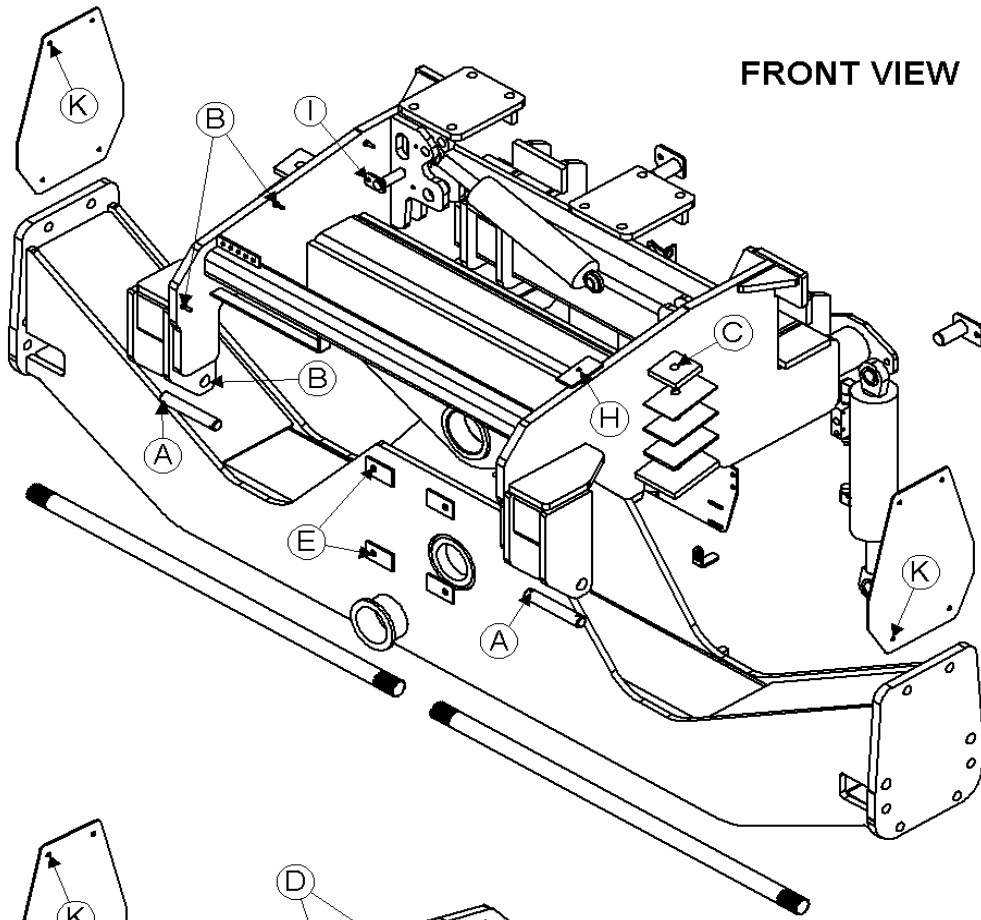
Model 2950 Hillco Leveling System
For Serial Number 2950-1007

CARRIAGE COMPONENTS				
REF.	PART NO.	QTY.	PART NAME	NOTES
1	LA-240412	1	CO ASM	
2	LA-240461	1	CU ASM, 114.5	
3	MC-134281	1	COUNTER SHAFT 1126.5 MM, LEFT	
4	MC-134291	1	COUNTER SHAFT 849.5 MM, RIGHT	
5	LA-229251	1	CM PIN ASM, MAIN PIVOT	
6	LP-103871	2	CO BUSHING, PIVOT	
7	LA-240511	2	CM PLT ASM, AXLE BOLT	
8	LM-236473	1	EM PLATE, CONTROL BOX MOUNT	
9	LP-230241	2	CM CAP, AXLE	
10	HC-103228	2	CYLINDER, MAIN LEVELING	SEE HYDRAULICS PAGE
11	LA-230551	4	CM PIN ASM, MAIN CYLINDER	
12	HC-101265	2	VALVE, COUNTER BALANCE, 1/2	SEE HYDRAULICS PAGE
13	HC-101842	1	CYLINDER, MASTER	SEE HYDRAULICS PAGE
14	LA-229071	2	TM PIN ASM, TRIM CYLINDER	
15	LP-234572	2	EM MOUNT, LIMIT SWITCH ACTUATOR	
16	LM-229483	2	CM PIN, HEADER LIFT	
17	LM-230621	2	CM SPACER, CO MOUNT 3/8	
18	LM-230611	2	CM SPACER, CO MOUNT 1/4	
19	LM-230641	2	CM SPACER, CO MOUNT 3/16	
20	LM-230631	2	CM PAD, CO MOUNT TOP	
21	LL20-100790	1	SERIAL NUMBER PLATE	

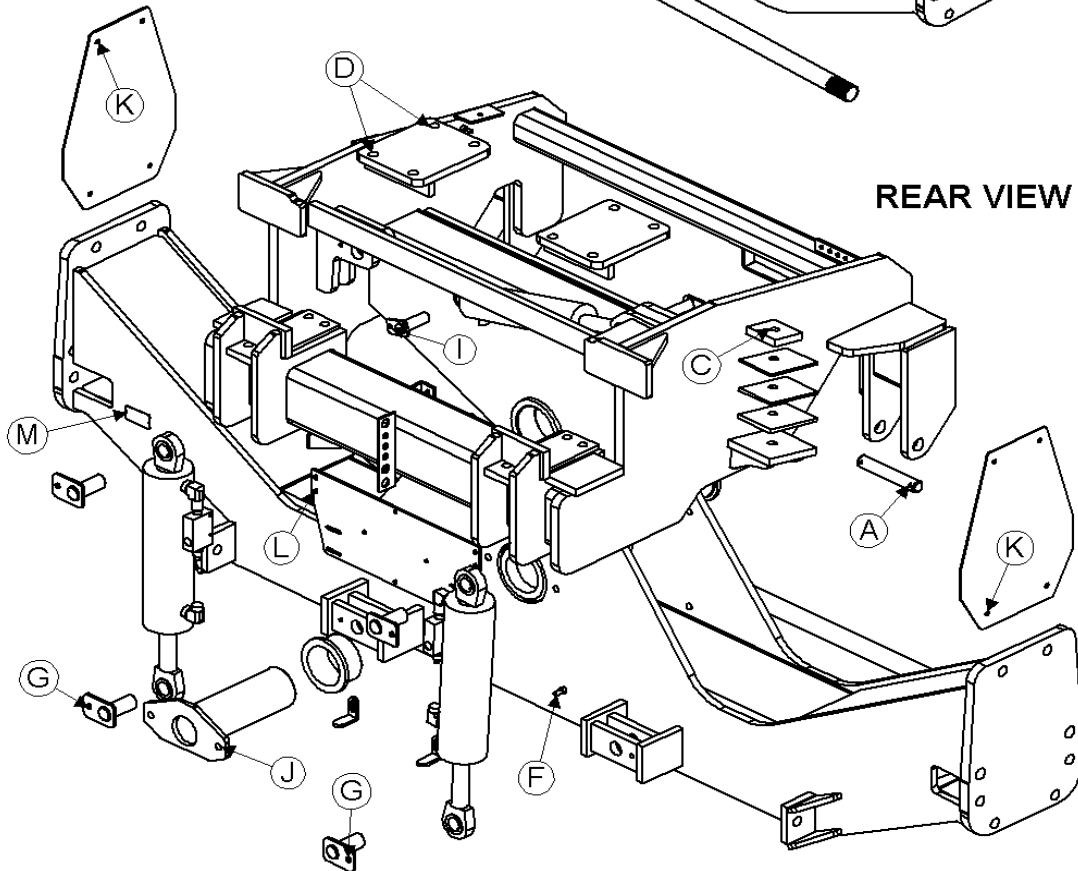
Model 2950 Hillco Leveling System
For Serial Number 2950-1007

CARRIAGE FASTENERS

FRONT VIEW



REAR VIEW

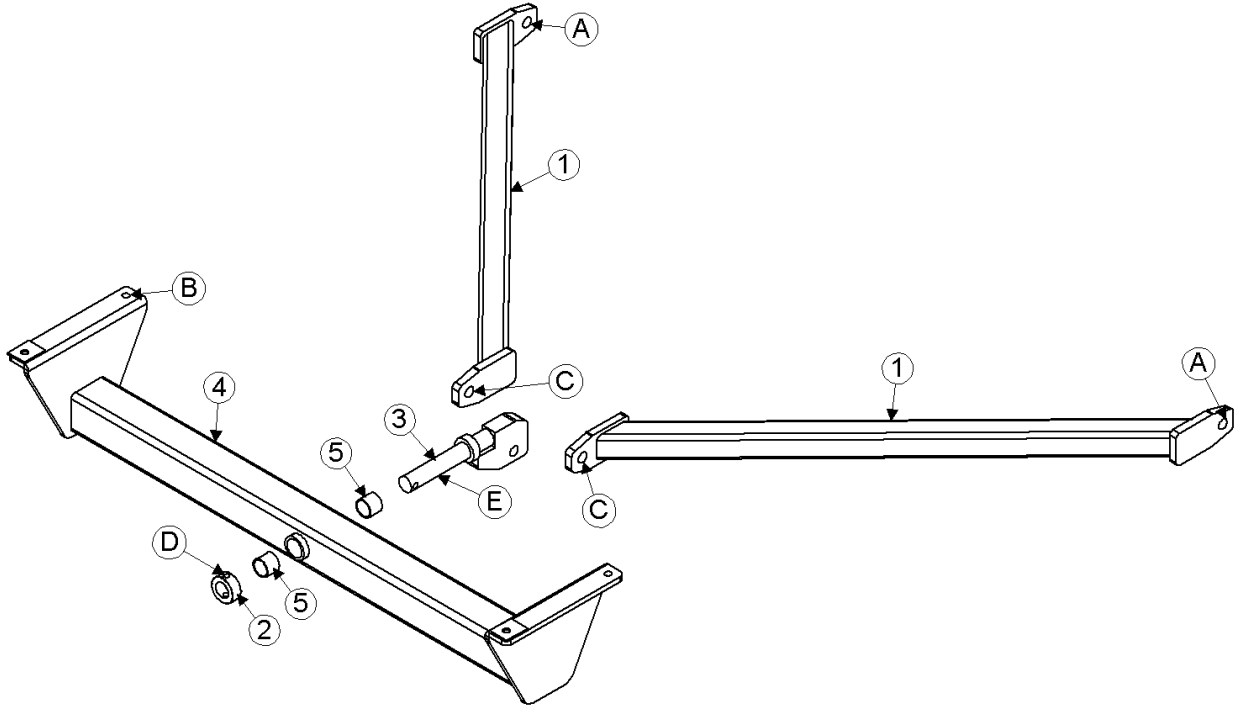


Model 2950 Hillco Leveling System
For Serial Number 2950-1007

CARRIAGE FASTENERS				
REF.	PART NO.	QTY.	PART NAME	WHERE USED
A	F-PCT-05X48	4	COTTER PIN 5/16 X 3	HEADER LIFT CYLINDER PIN
A	F-MB-10NR20	4	MACH BUSH, 10 GA NR 1-1/4	HEADER LIFT CYLINDER PIN
B	F-HNF-08MF	4	FLHN-8.8 M8 X 1.25	GREASE HOSE MNTS
C	F-HC-16M180E	2	HC-10.9 M16 X 2.00 X 180	FRONT OVERCARRIAGE MOUNT
C	F-FWH-10	4	FW 5/8 HD	FRONT OVERCARRIAGE MOUNT
C	F-HNS-16ME	2	HN-10.9 M16 X 2.00 STOVER	FRONT OVERCARRIAGE MOUNT
D	F-HNS-12C	8	HN8 3/4-10 STOVER	REAR OVERCARRIAGE MOUNT
D	F-HC8-12C256	8	HC8 3/4-10 X 16	REAR OVERCARRIAGE MOUNT
E	F-HCF-16M080E	4	FLHC-10.9 M16 X 2.00 X 80	TRANSMISSION
F	F-HNF-10ME	2	FLHN-10.9 M10 X 1.50	LIMIT SWITCH ACTUATOR
G	F-HCF-12M025F	4	FLHC-8.8 M12 X 1.75 X 25	LEVELING CYL MNT PIN
H	F-HC-08M090F	2	HC- 8.8 M8 X 1.25 X 90	BEHRINGER CLAPS FOR HYDRO HOSES
H	F-HNF-08MF	2	FLHN- 8.8 M8 X 1.25	BEHRINGER CLAPS FOR HYDRO HOSES
I	F-HCF-10M020E	2	FLHC-10.9 M10 X 1.50 X 20	MASTER CYL MNT PIN
J	F-HC-16M060E	2	HC-10.9 M16 X 2.00 X 60	MAIN PVT PIN
J	F-HNS-16ME	2	HN-10.9 M16 X 2.00 STOVER	MAIN PVT PIN
K	F-HC-10M040F	8	HC-8.8 M10 X 1.50 X 40	ORIGINAL AXLE COVER
K	F-FWF-06020	8	3/8 FW FENDER X 1-1/4	ORIGINAL AXLE COVER
K	F-HNF-10MF	8	FLHN-8.8 M10 X 1.50	ORIGINAL AXLE COVER
L	F-HC-10M025F	4	HC-8.8 M10 X 1.50 X 25	CONTROL BOX MOUNT BRACKET
L	F-HNF-10MF	4	FLHN-8.8 M10 X 1.50	CONTROL BOX MOUNT BRACKET
M	F-UDS-#7X06	2	#7 X 3/8 U-DRIVE SCREW	SERIAL NUMBER PLATE

Model 2950 Hillco Leveling System
For Serial Number 2950-1007

4 Y-BRACE

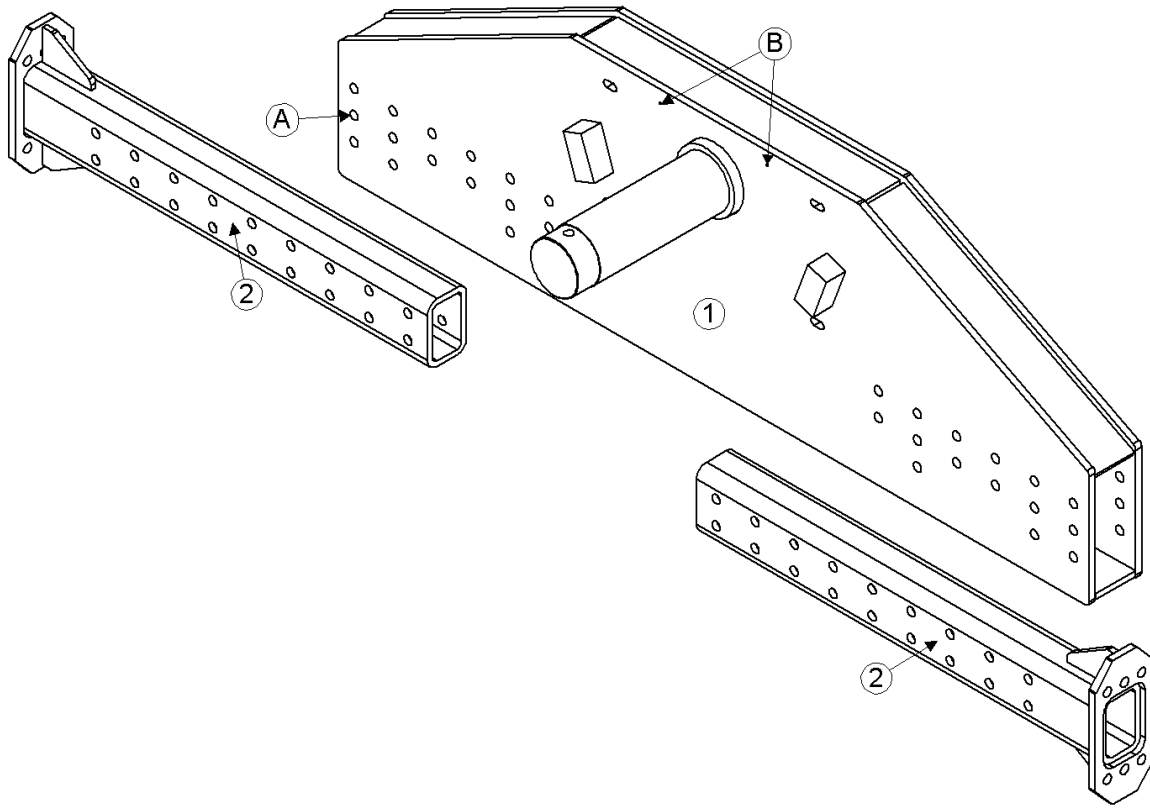


Model 2950 Hillco Leveling System
For Serial Number 2950-1007

Y-BRACE COMPONENTS				
REF.	PART NO.	QTY.	PART NAME	NOTES
1	LA-228702	2	YB ARM ASM	
2	LM-234101	1	YB COLLAR, PIVOT PIN	
3	LA-228762	1	YB PIN ASM, PIVOT	
4	LA-240481	1	YB ASM, CROSS SUPPORT	
5	MC-135431	2	BUSHING, PLANE	
Y-BRACE FASTENERS				
REF.	PART NO.	QTY.	PART NAME	WHERE USED
A	F-HC-24M070E	2	HC-10.9 M24 X 3.00 X 70	Y-BRACE FRNT MNT
A	F-HNS-24ME	2	HN-10.9 M24 X 3.00 STOVER	Y-BRACE FRNT MNT
B	F-HC-16M140E	4	HC-10.9 M16 X 2.00 X 140	Y-BRACE FRAME MNT
B	F-HNS-16ME	4	HN-10.9 M16 X 2.00 STOVER	Y-BRACE FRAME MNT
B	F-FWH-10	8	FW 5/8 HD	Y-BRACE FRAME MNT
C	F-HC-24M110E	1	HC-10.9 M24 X 3.00 X 110	Y-BRACE REAR MNT
C	F-HNS-24ME	1	HN-10.9 M24 X 3.00 STOVER	Y-BRACE REAR MNT
D	F-HC-12M080E	1	HC-10.9 M12 X 1.75 X 80	Y-BRACE PVT PIN COLLAR
D	F-HNS-12ME	1	HN-10.9 M12 X 1.75 STOVER	Y-BRACE PVT PIN COLLAR
E	F-MB-18NR24	20	MACH BUSH 18 GA NR 1-1/2" ID	Y-BRACE PVT PIN

Model 2950 Hillco Leveling System
For Serial Number 2950-1007

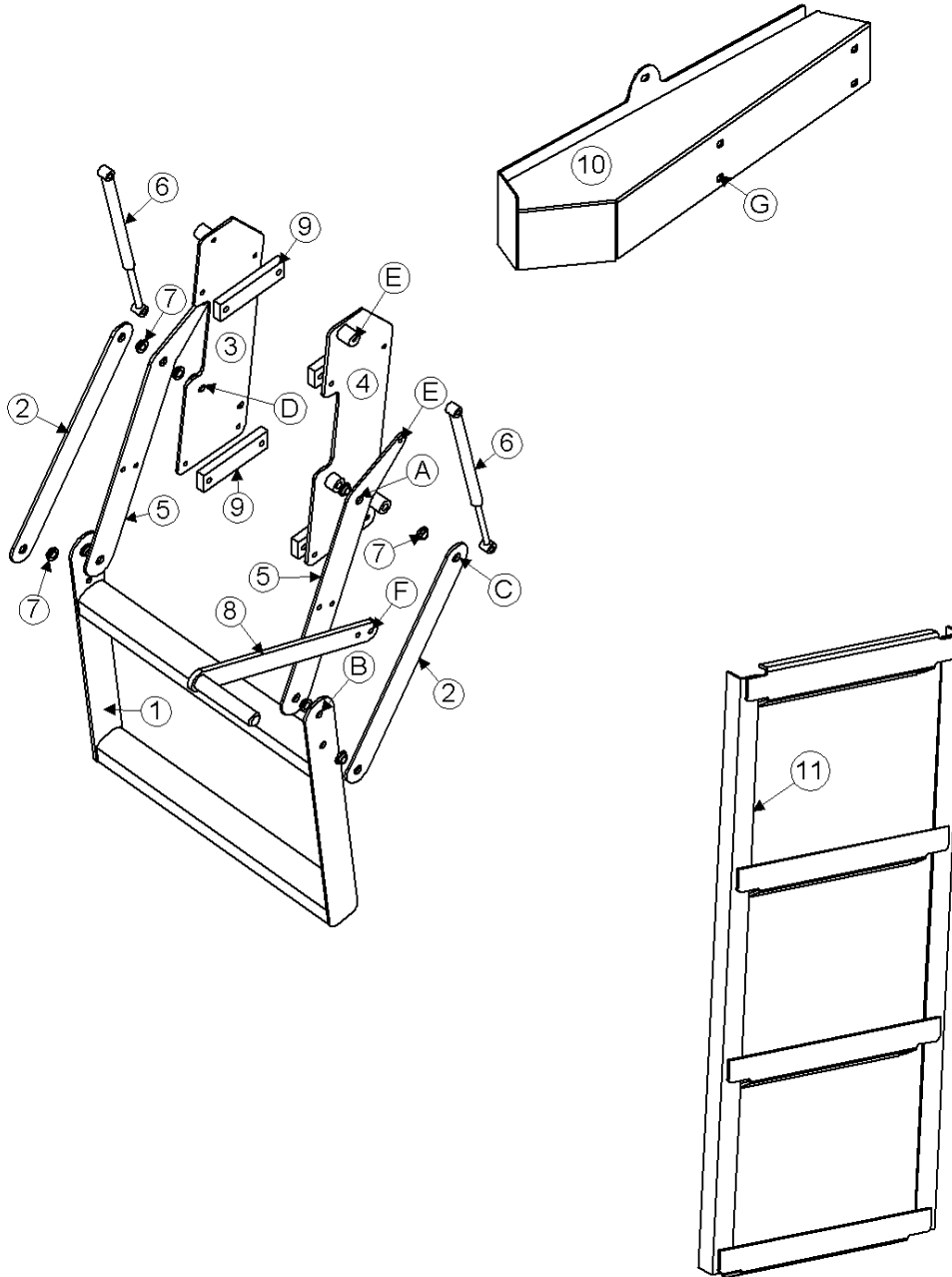
5 **DROP AXLE**



Model 2950 Hillco Leveling System
 For Serial Number 2950-1007

DROP AXLE COMPONENTS				
REF.	PART NO.	QTY.	PART NAME	NOTES
1	LA-228811	1	DA AXLE ASM, DROP	
2	LA-238881	2	DA ASM, EXTENSION	<i>OPTIONAL - IF COMBINE DIDN'T HAVE ADJUSTABLE REAR AXLE</i>
DROP AXLE FASTENERS				
REF.	PART NO.	QTY.	PART NAME	WHERE USED
A	F-HC-20M160E	8	HC-10.9 M20 X 2.50 X 160	
A	F-HC-20M210E	4	HC-10.9 M20 X 2.50 X 210	STEERING CYLINDER MOUNT
A	F-HNS-20ME	12	HN-10.9 M20 X 2.50 STOVER	
B	F-HCF-06M045F	2	FLHC-8.8 M6 X 1.00 X 45	

6 LADDER

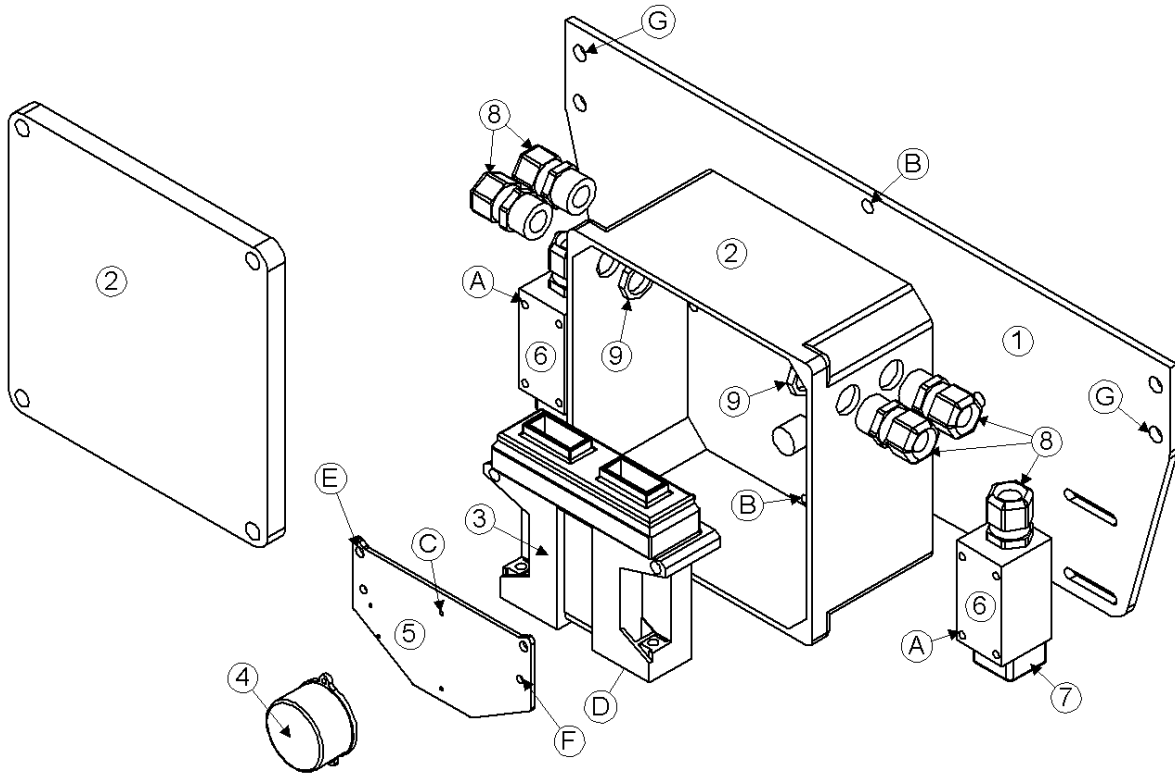


Model 2950 Hillco Leveling System
For Serial Number 2950-1007

LADDER COMPONENTS				
REF.	PART NO.	QTY.	PART NAME	NOTES
1	LA-236563	1	LM ASM, LOWER STEP ASM	
2	LM-236053	2	LM PLT, MID ARM (FOLDING LADDER LINK)	
3	LA-236542	1	LM PLT ASM, LFT SIDE FOLDING LADDER	
4	LA-236552	1	LM PLT ASM, RHT SIDE FOLDING LADDER	
5	LM-236632	2	LM PLT, UPPER ARM	
6	MC-134921	2	LIFT SUPPORT, GAS CHARGED	
NS	MC-134931	2	BRACKETS, LIFT SUPPORT (PAIR)	
7	MC-134941	8	BUSHING, FLANGED OILITE	
8	LA-238761	1	LM ASM, LADDER HANDLE	
9	LM-241271	4	LM FLT, LADDER SPACER	
10	LA-240161	1	LM ASM, LDR WEDGE	
11	LA-238691	1	LM ASM, REAR LADDER	
LADDER FASTENERS				
REF.	PART NO.	QTY.	PART NAME	WHERE USED
A	F-HC-12M050E	2	HC-8.8 M12 X 1.75 X 50	TOP SIDE PLATE PIVOT
A	F-HNS-12ME	2	HN-10.9 M12 X 1.75 STV	PIVOTS
B	F-HC-12M030F	4	HC-8.8 M12 X 1.75 X 30	MIDDLE PIVOTS
B	F-HNS-12ME	4	HN-10.9 M12 X 1.75 STV	PIVOTS
C	F-HC-12M065F	2	HC-8.8 M12 X 1.75 X 65	BOTTOM SIDE PLT PIVOTS
C	F-HNS-12ME	2	HN-10.9 M12 X 1.75 STV	PIVOTS
D	F-HC-08M035F	8	HC-8.8 M8 X 1.25 X 35	SIDE PLATE MOUNTS
D	F-HNF-08MF	8	FLHN 8.8 M8 X 1.25	SIDE PLATE MOUNTS
E	F-HNJ-05C	2	HN5 5/16-18 JAM NUT	BALL STUD
E	F-LW-05	4	LW 5/16	BALL STUD
F	F-HC-08M025F	2	HC-8.8 M8 X 1.25 X 25	HANDLE
F	F-HNF-08MF	2	FLHN 8.8 M8 X 1.25	HANDLE
G	F-HCF-10M025F	4	FLHC-8.8 M10 X 1.50 X 25	WEDGE
G	F-HNF-10MF	4	FLHN-8.8 M10 X 1.50	WEDGE

Model 2950 Hillco Leveling System
For Serial Number 2950-1007

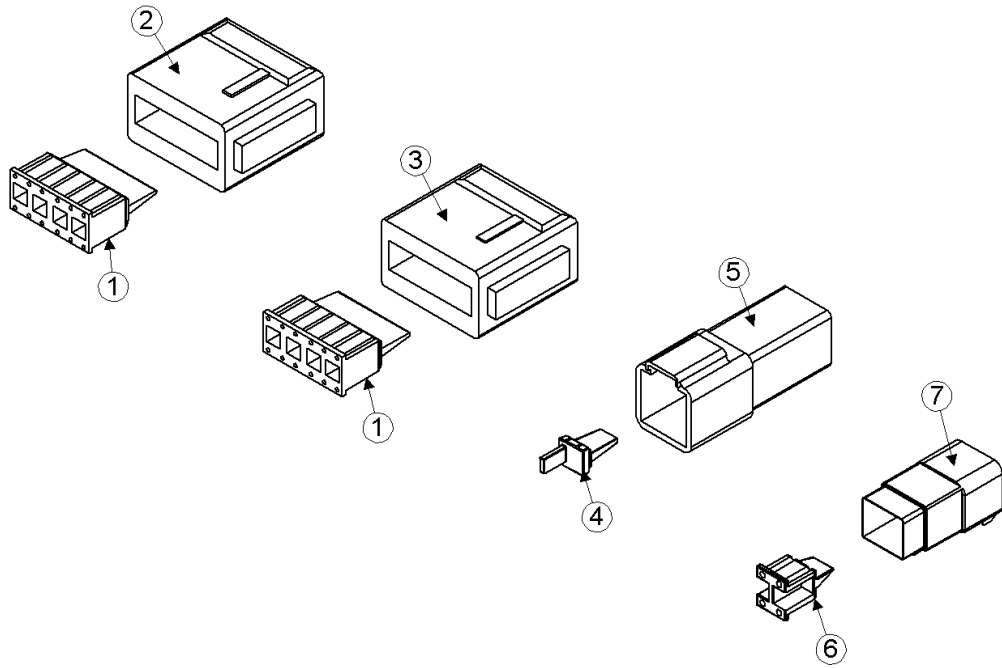
7 ELECTRICAL COMPONENTS



Model 2950 Hillco Leveling System
For Serial Number 2950-1007

ELECTRICAL BOX COMPONENTS				
REF.	PART NO.	QTY.	PART NAME	DESCRIPTION
ASM	LA-257371	1	EM ASM, CONTROLLER	
1	LM-236473	1	EM PLATE, CONTROL BOX MOUNT	
2	LM-255341	1	EM BOX, CONTROLLER MOUNT	
3	EC-141831	1	CONTROLLER	
4	LA-255821	1	EM ASM, CLINOMETER	
5	LM-255331	1	EM SHT, CLINOMETER MOUNT	
6	EC-100557	2	BODY, LIMIT SWITCH	
7	EC-100692	2	HEAD, LIMIT SWITCH STRAIGHT PLUNGER	
8	EC-138781	6	STRAIN RELIEF, NYLON, BLK, 1/2 NPT	
9	EC-142121	4	STRAIN RELIEF NUT, 1/2" NYLON, BLK	
MAIN ELECTRICAL BOX FASTENERS				
REF.	PART NO.	QTY.	PART NAME	WHERE USED
A	F-PHM-#10C28	4	PHMS 10-24 X 1-3/4	LIMIT SWITCH MNT
A	F-HNF-#10C	4	HN 10-24, FLNG SERR	LIMIT SWITCH MNT
B	F-HC5-04C12	3	HC5 1/4-20 X 3/4	PVC BOX TO BRACKET
B	F-LW-04	3	LW 1/4	PVC BOX TO BRACKET
C	F-PHM-#6C06	2	PHMS #6-32 X 3/8	CLINOMETER MOUNT
D	F-PHM-04C24	2	PHMS 1/4-20 X 1-1/2	CONTROLLER TO PVC BOX
D	F-HNF-04C	2	FLHN 1/4-20 SERR	CONTROLLER TO PVC BOX
E	F-PHM-04C36	2	PHMS 1/4-20 X 2-1/4	GROUNDING PLATE MOUNTING
E	F-HNF-04C	2	FLHN 1/4-20 SERR	GROUNDING PLATE MOUNTING
F	F-PHM-#10C16	2	PHMS 10-24 X 3/4	GROUND
F	F-HNF-#10C	2	HN5 10-24, FLNG SERR	GROUND
F	F-HN-#10C	2	HN5 10-24	GROUND
G	F-HC-10M025F	4	HC- 8.8 M10 X 1.50 X 25	
G	F-HNF-10MF	4	FLHN 8.8 M10 X 1.50	

Model 2950 Hillco Leveling System
For Serial Number 2950-1007
ELECTRICAL CONNECTORS



Model 2950 Hillco Leveling System
For Serial Number 2950-1007

ELECTRICAL CONNECTORS				
REF.	PART NO.	QTY.	PART NAME	NOTES
1	EC-141741	2	DTM SERIES 12-SOCKET WEDGE	
2	EC-141751	1	DTM SERIES 12-SOCKET PLUG W/ A-KEY	
3	EC-141761	1	DTM SERIES 12-SOCKET PLUG W/ B-KEY	
4	EC-141821	1	DTM SERIES 4-PIN WEDGE	
5	EC-141811	1	DTM SERIES 4-PIN RECEPTACLE	
6	EC-141801	1	DTM SERIES 4-SOCKET WEDGE	
7	EC-141791	1	DTM SERIES 4-SOCKET PLUG	
NS	EC-141771	10	DTM SERIES SOCKET CONTACT, STAMPED	
NS	EC-141781	4	DTM SERIES PIN CONTACT, STAMPED	
NS	ET-ST-20#10	6	TERMINAL, RING, #10, 20 GA., NON-INSULATED	
NS	ET-ST-2004	1	TERMINAL, RING, NON-INS, 1/4, 20 GA	
NS	EC-136651	1	WP CONN. ASM. 1M	
NS	EC-136661	4	WP PIN TERM	
NS	EC-136681	1	WP CONN. ASM.4F	
NS	EC-136621	1	WP FM SLEEVE TERM	
NS	EC-136631	2	WP CABLE SEAL	
NS	EC-133281	2	DIODE, 6 AMP, 50 PIV, SILICON	
NS	EC-136711	1	AMP SOCKET	
NS	EC-136741	1	AMP CPC CABLE CLAMP	
NS	EC-136731	1	AMP STD. SEX PLUG	
NS	ET-ST-2005	2	5/16 STUD TERMINAL	
NS	EC-139631	1	CONNECTOR, PARALLEL 12-10 GA	
NS	EC-139641	2	CONNECTOR, PARALLEL 16-14 GA	
NS	EC-140891	8	SPADE, FEMALE, INSULATED, 16-22 GA	

Model 2950 Hillco Leveling System
For Serial Number 2950-1007
ELECTRICAL CABLES



#1 LA-255631
EM CABLE ASM, LIMIT SWITCH



#2 LA-257231
EM CABLE ASM, BOX TO VALVE



#3 LA-255821
EM ASM, CLINOMETER



#4 LA-249062
EM CABLE ASM,
LEVELING VALVE



#5 LTA-242271
LTM CABLE MAIN WITH DIODES



#6 LTA-242281
LTM CABLE FOR DUMP VALVE



#7 LA-257311
EM ALL CABLE ASM, CAB TO
BOX, LATE



#9 LA-257301
EM CABLE ASM, CAB TO BOX



#10 LA-252462
EM CABLE ASM, MAX LEVEL
LIGHT



#8 LA-255621
EM CABLE ASM, RESISTOR

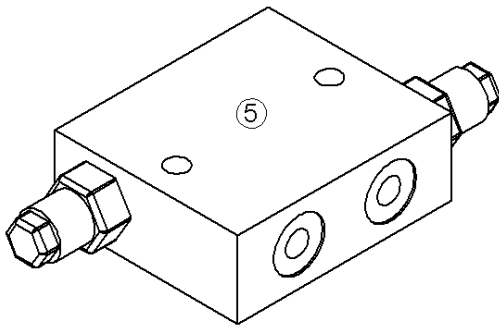
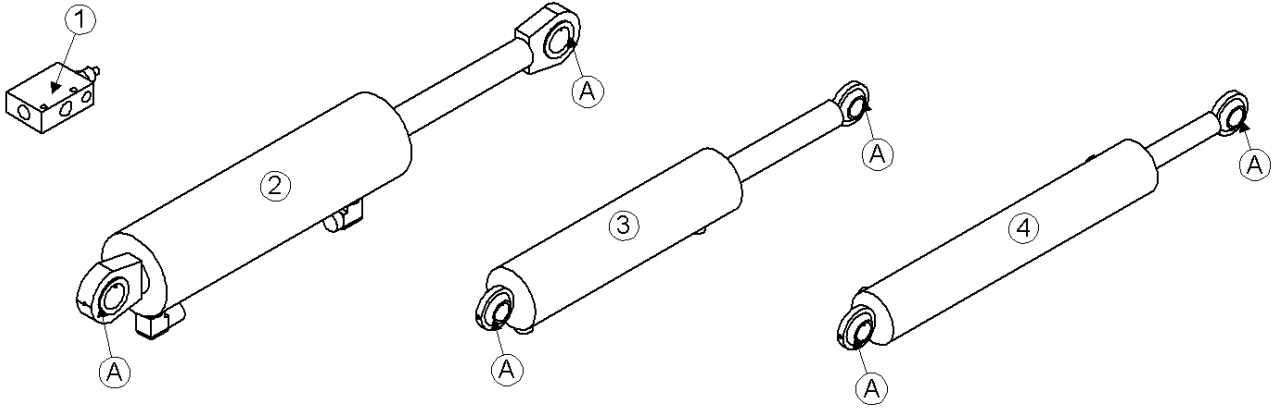


#11 LA-259701
EM CABLE ASM, CM JUMPER

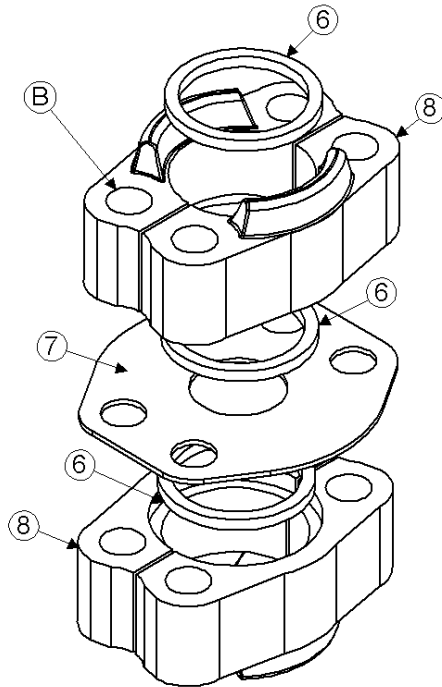
Model 2950 Hillco Leveling System
 For Serial Number 2950-1007

ELECTRICAL CABLES				
REF.	PART NO.	QTY.	PART NAME	NOTES
1	LA-255631	2	EM CABLE ASM, LIMIT SWITCH	
2	LA-257231	1	EM CABLE ASM, BOX TO VALVE	
3	LA-255821	1	EM ASM, CLINOMETER	
4	LA-249062	1	EM CABLE ASM, LEVELING VALVE	
5	LTA-242271	1	LTM CABLE MAIN W/ DIODES	
FOR COMBINES WITH SERIAL NUMBERS: 9600 & 9610 (660301-)				
6	LTA- 242281	1	LTM CABLE FOR DUMP VALVE	<i>FOR MANUAL OPERATION</i>
FOR LATE 50 SERIES COMBINES WITH SERIAL NUMBERS: 9650 (695301-)				
7	LA-257311	1	EM ALL CABLE ASM, CAB TO BOX, LATE	
8	LA-255621	1	EM CABLE ASM, RESISTOR	INCLUDED IN LA-257311
9	LA-257301	1	EM CABLE ASM, CAB TO BOX	INCLUDED IN LA-257311
10	LA-252462	1	EM CABLE ASM, MAX LEVEL LIGHT	INCLUDED IN LA-257311
11	LA-259701	1	EM CABLE ASM, CM JUMPER	

8 HYDRAULICS



MANIFOLD, RELIEF VALVE

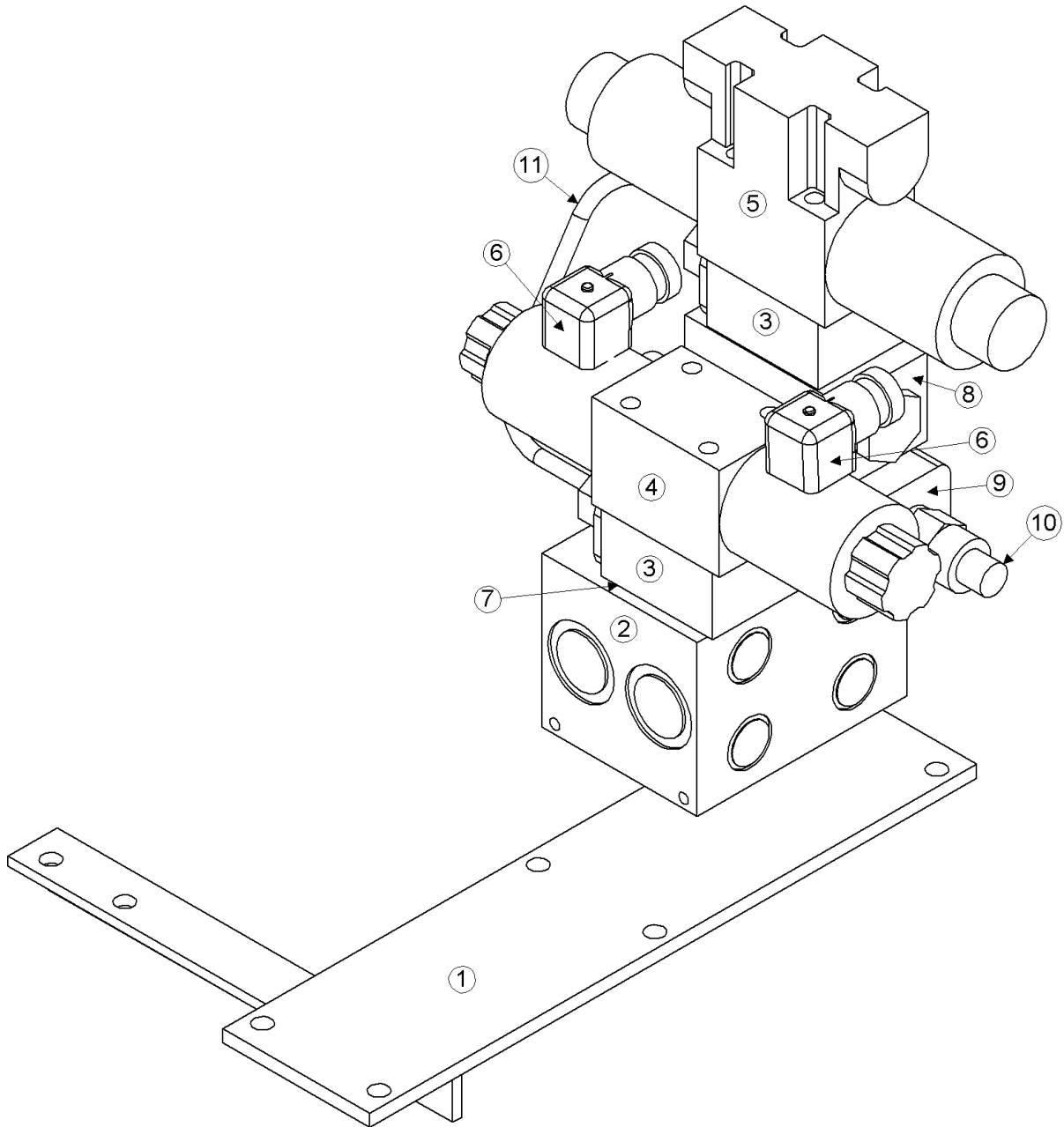


CODE 62 SPLIT FLANGE
CONNECTOR KIT
ASSEMBLY WITH O-RINGS

Model 2950 Hillco Leveling System
For Serial Number 2950-1007

HYDRAULIC COMPONENTS				
REF.	PART NO.	QTY.	PART NAME	NOTES
1	HC-101265	2	VALVE, COUNTERBALANCE, 1/2	
..	HC-102068	2	BODY, COUNTERBALANCE VALVE	
..	HC-102125	2	CARTRIDGE, COUNTERBALANCE VALVE	
NS	HC-100805	2	SEAL KIT, COUNTERBALANCE VALVE	
2	HC-103228	2	CYLINDER, MAIN LEVELING	
NS	HC-134251	2	SEAL KIT, MAIN LEVELING CYLINDER	
3	HC-101842	1	CYLINDER, MASTER	
NS	HC-134201	1	SEAL KIT, MASTER CYLINDER	
4	HC-100706	1	CYLINDER, SLAVE	
NS	HC-134191	1	SEAL KIT, SLAVE CYLINDER	
5	HC-138691	1	MANIFOLD, RELIEF VALVE	
NS	HC-141351	2	CARTRIDGE, RELIEF VALVE	
NS	HC-141361	1	SEAL KIT, RELIEF VALVE	
HYDRAULIC FASTENERS				
REF.	PART NO.	QTY.	PART NAME	WHERE USED
A	F-SSS-04F04	6	SET SCREW, SOCKET 1/4-28 X 1/4, GRADE 8	MASTER AND MAIN CYLINDERS
CODE 62 SPLIT FLANGE CONNECTOR KIT COMPONENTS				
REF.	PART NO.	QTY.	PART NAME	NOTES
ASM	HC-101843	2	CODE 62 SLT FLNG CONNECTOR KIT WITH O-RINGS	FWD AND REAR PROPULSION HOSE
ONE HC-101843 KIT INCLUDES				
5	HC-134911	3	O-RINGS, CODE 62 CONNECTOR	
6	HC-137891	1	PLATE, CODE 62	
7	HC-137901	2	CODE 62, #16 SPLIT FLANGE KIT	
B	F-HC8-07C44	4	HC8 7/16 X 2-3/4	
B	F-HN8-07C	4	HN8 7/16-14	

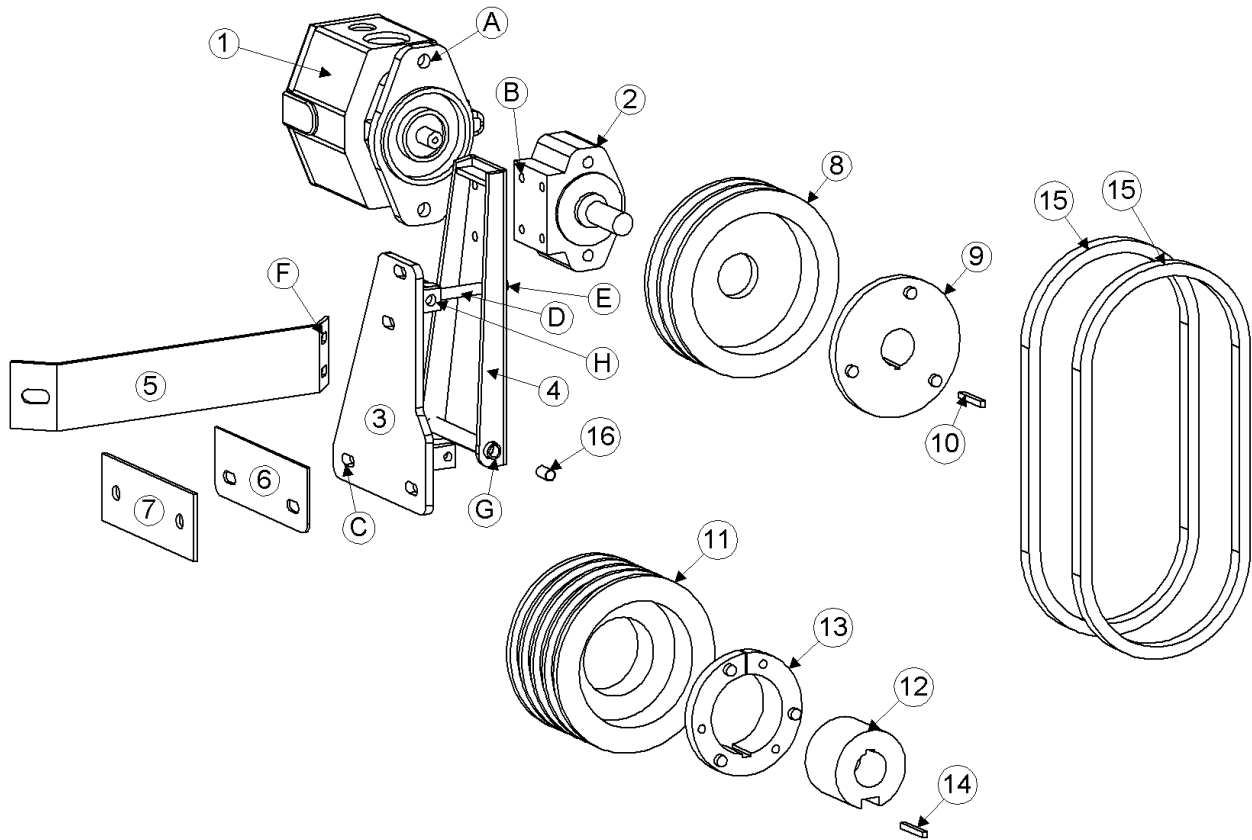
Model 2950 Hillco Leveling System
For Serial Number 2950-1007
HYDRAULIC MANIFOLD



Model 2950 Hillco Leveling System
For Serial Number 2950-1007

MANIFOLD COMPONENTS				
REF.	PART NO.	QTY.	PART NAME	NOTES
ASM	LA-259711	1	MANIFOLD ASM, 2950	
1	LA-229293	1	HM MOUNT ASM, MANIFOLD	
2	HC-138851	1	MANIFOLD, 2 STATION	
3	HC-101264	2	SHUTTLE ASM, LOAD SENSE	
..	HC-101021	2	CARTRIDGE, LOAD SENSE VALVE	
..	HC-101022	2	BODY, LOAD SENSE VALVE	
NS	HC-102082	2	SEAL KIT, LOAD SENSE SHUTTLE ASM	
4	HC-140411	2	VALVE, DIRECTIONAL CONTROL, LEVELING PROPORTIONAL	
NS	LM-250111	2	ORIFICE, .128, "P" PORT IN DIRECTIONAL CONTROL VALVE	
NS	HC-142731	2	SEAL KIT, DIRECTIONAL CONTROL VALVE	
5	HC-139881	1	VALVE, HEADER TRIM DIRECTIONAL CONTROL	
NS	LM-250121	1	ORIFICE, .55, "P" PORT IN DIRECTIONAL CONTROL VALVE	
NS	HC-142731	1	SEAL KIT, DIRECTIONAL CONTROL VALVE	
6	HC-140291	4	PLUG, DIN, LIGHTED	
7	HC-142761	2	SUBPLATE	
8	HC-138881	1	VALVE, PILOT OPERATED CHECK	
NS	HC-143951	1	CARTRIDGE, PILOT OPERATED CHECK VALVE	
NS	HC-143961	1	SEAL KIT, PILOT OPERATED CHECK VALVE	
NS	HC-143971	4	O-RINGS, PILOT OPERATED CHECK VALVE	
9	HC-138891	1	RELIEF, DUAL	SET TO 1800 PSI
10	HC-141351	2	CARTRIDGE, RELIEF VAVLE	
NS	HC-101038	1	SEAL KIT, HEADER TRIM RELIEF	
11	LM-250131	1	HM TUBE, LOAD SENSE	
MANIFOLD FASTENERS				
REF.	PART NO.	QTY.	PART NAME	WHERE USED
A	F-HNF-05C	4	FLHN 5/16-18 SERR.	SECURES MANIFOLD TO MNT PLT
B	F-SHC-#10C52	4	SHCS 10-24 X 3-1/4	LEVELING SECTION OF MANIFOLD
B	F-LW-#10	4	LW #10	LEVELING SECTION OF MANIFOLD
C	LM-249701	4	HM STUD, MANIFOLD TRIM	TRIM SECTION OF MANIFOLD
D	HC-139871	4	NUT, STUD, 10-24	TRIM SECTION OF MANIFOLD

Model 2950 Hillco Leveling System
For Serial Number 2950-1007
HYDRAULIC PUMP



Model 2950 Hillco Leveling System
For Serial Number 2950-1007

PUMP COMPONENTS				
REF.	PART NO.	QTY.	PART NAME	DESCRIPTION
1	HC-133151	1	PUMP, HYDRAULIC PFC-116	
..	HC-135231	1	SEAL KIT, PUMP	
..	HC-135241	1	SEAK, PUMP MAIN SHAFT	
..	HC-135251	2	SEAL, PINTLE SHAFT	
..	HC-103099	1	COMPENSATOR #2	
..	HC-137061	1	KEY, HYDRAULIC PUMP SHAFT	
2	HC-141531	1	ADAPTER, OVER-HUNG LOAD (300 SERIES)	
NS	LA-259551	1	REBUILD KIT, 300 OHLA	
3	LA-235371	1	HM PUMP DR, ASM MNT	
4	LA-235381	1	HM PUMP DR, PUMP MNT ASM	
5	LM-235821	1	HM PUMP DR, GUSSET	
6	LP-235311	1	HM PUMP DR, SPACER PLT	
7	LM-235831	1	HM PUMP DR,STIFFENER PLT	
8	MC-134331	1	SHIEVE, 2 GROOVE, 8.5"	
9	MC-134341	1	BUSHING, SF 1	
10	LS-235291	1	HM KEY, OHLA	
11	MC-134321	1	SHIEVE, 4 GROOVE, 8"	
12	LM-235281	1	HM PUMP DR, HUB	
13	MC-134351	1	BUSHING, 3-1/2 TAPER LOCK	
14	LM-236611	1	KEY 3-1/2 QD HUB	
15	MC-134361	2	BELT, V C46	
16	MC-136251	2	BUSHING, PLANE OILLITE BRONZE	PUMP DRIVE PIVOT BUSHING
OPTIONAL - OHLA GREASE TO OIL CONVERSION				
NS	LA-262131	1	KIT, LUBRICATION 2960 OHLA	
NS	LA-260401	1	OHLA SYNTHETIC OIL (ISO68) 2.5mL	INCLUDED IN LA-262131
NS	HC-143251	1	METAL FILTER BREATHER, 10 MICRON	INCLUDED IN LA-262131
NS	HC-143231	1	1/8" PIPE X 3" CLOSED NIPPLE	INCLUDED IN LA-262131
NS	HC-143241	1	1/8" FPIPE MERCHANT COUPLER	INCLUDED IN LA-262131
PUMP FASTENERS				
REF.	PART NO.	QTY.	PART NAME	WHERE USED
A	F-HC-10M110E	2	HC-10.9 M10 X 1.50 X 110	PUMP TO ADAPTER MOUNT
A	F-HNF-10ME	2	FLHN-10.9 M10 X 1.50	PUMP TO ADAPTER MOUNT
B	F-HC8-06C20	4	HC8 3/8-16 X 1-1/4	OHLA MOUNT
B	F-LW-06A	4	LW 3/8 HD	OHLA MOUNT
C	F-HC-12M040E	4	HC-10.9 M12 X 1.75 X 40	PUMP MNT TO GRAIN TANK
C	F-HNS-12ME	4	HN-10.9 M12 X 1.75 STOVER	PUMP MNT TO GRAIN TANK
C	F-FWH-08	8	FW 1/2 HD	PUMP MNT TO GRAIN TANK
D	F-EYB-12M100F	1	EYE BOLT-8.8 M12 X 1.75 X 100	BELT TIGHTENER
E	F-HNN-12MF	1	HN-8.8 M12 X 1.75 NYLOCK	BELT TIGHTENER
E	F-FWH-08	1	FW 1/2 HD	BELT TIGHTENER
F	F-HCF-10M040E	1	FLHC-10.9 M10 X 1.50 X 40	GRAINTANK GUSSET
F	F-HNF-10ME	1	FLHN-10.9 M10 X 1.50	GRAINTANK GUSSET
G	F-HC-10M200E	1	HC-10.9 M10 X 1.5 X 200	PUMP MNT SWING BOLT
G	F-HNN-10MF	1	HN-8.8 M10 X 1.5 NYLOCK	PUMP MNT SWING BOLT
H	F-HC-12M060F	1	HC-8.8 M12 X 1.75 X 60	BELT TIGHTENER PIVOT BOLT
H	F-HNN-12MF	1	HN-8.8 M12 X 1.75 NYLOCK	BELT TIGHTENER PIVOT BOLT

Model 2950 Hillco Leveling System
For Serial Number 2950-1007

HYDRAULIC HOSES

MANIFOLD HOSES				
NS	LA-130312	1	3/4" 100R1 50" #10 FORS X #12 FORS	MANIFOLD "T" PORT TO RETURN LINE
NS	LA-130332	1	1/2" 100R2 93" #8 FORS BOTH ENDS	LEVELING VALVE "A" PORT TO BULKHEAD #6
NS	LA-130332	1	1/2" 100R2 93" #8 FORS BOTH ENDS	LEVELING VALVE "B" PORT TO BULKHEAD #5
NS	LA-130342	1	1/4" 100R2 101" #4 FORS BOTH ENDS	TRIM A TO BULKHEAD #4
NS	LA-130342	1	1/4" 100R2 101" #4 FORS BOTH ENDS	TRIM B TO BULKHEAD #3
PUMP HOSES				
NS	LA-133932	1	1/2" 100R2 138" #10 FORS BOTH ENDS	PRESSURE PUMP TO MANIFOLD "P" PORT
NS	LA-133952	1	1/4" 100R2 126" #4 FORS 90 X #6 FORS STR	LOAD SENSE PUMP TO MANIFOLD
NS	LA-133912	1	1" 100R1 96" #16 FORS X #16 FORS 90°	SUCTION RESERVOIR TO PUMP
NS	LA-133922	1	3/8" 100R2 96" #6 FORS X #6 FORS 90°	RESERVOIR TO PUMP CASE DRAIN
NS	LA-133942	1	1/4" 100R2 245" #4 FORS X #6 FORS 90°	PUMP CASE DRAIN TO BULKHEAD #2
BRAKE HOSES				
NS	LA-130371	1	#4 TITE FLEX 31" #4 FORS X #4 MORS	BRAKE LINE LEFT
NS	LA-130371	1	#4 TITE FLEX 31" #4 FORS X #4 MORS	BRAKE LINE RIGHT
FEEDER HOUSE HOSES				
NS	LA-135051	1	1/2" 100R2 30" #8 MORS X #8 FORS	FEEDER HOUSE HOSE EXTENSIONS
NS	LA-135061	1	3/8" 100R2 30" #6 MORS X #6 FORS	FEEDER HOUSE HOSE EXTENSIONS
NS	LA-135071	1	1/2" 100R2 136-3/4" #8 MORB X #8 FORS	FEEDER HOUSE HOSE EXTENSIONS
NS	LA-135081	1	1/2" 100R2 139-3/4" #8 MORB X #10 FORS	FEEDER HOUSE HOSE EXTENSIONS
NS	LA-135091	1	3/8" 100R2 154 #6 FORS X #4 FORS	FEEDER HOUSE HOSE EXTENSIONS
HYDROSTAT HOSES				
NS	LA-130762	1	3/4" 100R1 135" #12 FORS X #12 FORS 45°	HYDROSTAT RETURN HOSE
NS	LA-130771	1	1" 100R15 49" CODE 62 STR X CODE 62 90° (SHORT DROP)	
NS	LA-130881	1	1" 100R15 78" CODE 62 STR X CODE 62 90° (SHORT DROP)	

Model 2950 Hillco Leveling System
For Serial Number 2950-1007

HYDRAULIC HOSES (CONTINUED)

HEADER LIFT CYLINDER HOSES				
NS	LA-136071	1	1/2" 100R2 105" #8 FORS BOTH ENDS	RIGHT HDR LFT CYLINDER TO BULKHEAD #1 RIGHT
NS	LA-136071	1	1/2" 100R2 105" #8 FORS BOTH ENDS	LEFT HDR LFT CYLINDER TO BULKHEAD #1 LEFT
NS	LA-136071	1	1/2" 100R2 105" #8 FORS BOTH ENDS	TEE AT ACCUMULATOR VALVE TO BULKHEAD #1
BULKHEAD HOSES				
NS	LA-136021	1	1/2" 100R2 45" #8 FORS BOTH ENDS	POCV #2 LEFT TO BULKHEAD #6 RIGHT
NS	LA-136021	1	1/2" 100R2 45" #8 FORS BOTH ENDS	POCV #2 RIGHT TO BULKHEAD #5 LEFT
NS	LA-136031	1	1/4" 100R2 42.5" #4 FORS BOTH ENDS	POCV #4 LEFT TO BULKHEAD #2 RIGHT
NS	LA-136031	1	1/4" 100R2 42.5" #4 FORS BOTH ENDS	POCV #4 RIGHT TO BULKHEAD #2 LEFT
NS	LA-136041	1	1/4" 100R2 67" #4 FORS BOTH ENDS	MASTER ROD TO BULKHEAD #4 LEFT
NS	LA-136051	1	1/4" 100R2 80.5" #4 FORS BOTH ENDS	MASTER BASE TO BULKHEAD #3 LEFT
NS	LA-136061	1	1/4" 100R2 49.5" #4 FORS X #4 FORS 90°	BULKHEAD #5 RIGHT REAR TO POCV #3 LEFT
NS	LA-136061	1	1/4" 100R2 49.5" #4 FORS X #4 FORS 90°	BULKHEAD #6 LEFT REAR TO POCV #3 RIGHT
NS	LA-130402	1	1/2" 100R2 54.5" #8 FORS BOTH ENDS	MAIN CYLINDER ROD LEFT TO BULKHEAD #5 RIGHT
NS	LA-130402	1	1/2" 100R2 54.5" #8 FORS BOTH ENDS	MAIN CYLINDER ROD RIGHT TO BULKHEAD #6 LEFT
NS	LA-130462	1	1/4" 100R2 HOSE 180" #4FORS X #6 MORB	BULKHEAD #2 TO SLAVE BASE
NS	LA-130472	1	1/4" 100R2 HOSE 195" #4FORS X #6 MORB	BULKHEAD #3 TO SLAVE ROD
GREASE HOSES & FITTINGS				
NS	LA-136081	1	3/16" 100R7 66.5" 1/8 MP X 1/8 MP	LEFT LEV CYL BASE TO GREASE BULKHEAD #1
NS	LA-136091	1	3/16" 100R7 72" 1/8 MP X 1/8 MP	MASTER ROD TO GREASE BULKHEAD #2
NS	LA-136101	1	3/16" 100R7 30" 1/8 MP X 1/8 MP	MASTER BASE TO GREASE BULKHEAD #3
NS	LA-136111	1	3/16" 100R7 45" 1/8 MP X 1/8 MP	RIGHT LEV CYL BASE TO GREASE BULKHEAD #4
NS	LA-136121	1	3/16" 100R7 60" 1/8 MP X 1/8 MP	MAIN PIVOT PIN TO BULKHEAD #5
NS	HC-138011	5	1/4-28 STRAIGHT ZERK	ALL GREASE LINES
NS	HA-S-2MN2FP	5	1/8 NPSM X 1/8 FPT BULKHEAD CONNECTOR	BULKHEAD CONNECTOR
NS	HA-NJ-2FN	5	1/8 NPSM BULKHEAD LOCKNUT	BULKHEAD CONNECTOR
NS	HA-L-2FP2MP	1	1/8 MPT 90 STREET EL	MAIN PIVOT PIN
NS	HC-135761	1	1/4-28 MALE X 1/8 FPT 45°	LEFT MAIN CYLINDER BASE
NS	HC-135771	1	1/4-28 MALE X 1/8 FPT 90°	RIGHT MAIN CYLINDER BASE
NS	HC-135771	1	1/4-28 MALE X 1/8 FPT 90°	MASTER BASE

Model 2950 Hillco Leveling System
For Serial Number 2950-1007

HYDRAULIC ADAPTERS

REF.	PART NO.	QTY.	PART NAME	NOTES
MANIFOLD ADAPTERS				
NS	HA-S-10MF10MO	1	#10 MORB X #10 MORS STR	PRESSURE IN
NS	HA-L-10FF10MF	1	#10 FORS X #10 MORS 90°	PRESSURE IN
NS	HA-L-4FF4MF	1	#4 FORS X #4 MORS 90°	LOAD SENSE
NS	HA-S-4MF4MO	1	#4 MORB X #4 MORS STR	LOAD SENSE SHUTTLE ON TRIM
NS	HA-T-4MF4MO	1	#4 MORB X #4 MORS STR THREAD RUN TEE	LOAD SENSE SHUTTLE ON LEVELING
NS	HC-139901	2	#4 ORS-TF NUT	STEEL LOAD SENSE LINE
NS	HC-139911	2	#4 ORS-TF FERRULE	STEEL LOAD SENSE LINE
NS	HC-139921	2	#4 ORS-TF SLEEVE	STEEL LOAD SENSE LINE
NS	HA-A-10MO	1	#10 MORB ALLEN HEAD PLUG	"P" PORT
NS	HA-P-6MO	1	#6 MORB HEX PLUG	GAUGE PORT ON MANIFOLD
NS	HA-S-10MF10MO	1	#10 MORB X #10 MORS STR	TANK OUT
NS	HA-L-10FF10MF	1	#10 FORS X #10 MORS 90°	TANK OUT
NS	HA-S-4FP10MO	1	#10 MORB X #4 FNPT STR	PRESSURE GUAGE
NS	HA-L-8MF8MO	2	#8 MORB X #8 MORS 90°	LEV A&B
NS	HA-S-4MF8MO	2	#8 MORB X #4 MORS STR	TRIM A & B
NS	HA-L-4FF4MF	2	#4 FORS X #4 MORS 90°	TRIM A & B
NS	HC-139871	4	NUT, STUD, 10-24	TRIM MANIFOLD TOWER
BULKHEAD MOUNT ADAPTERS				
NS	HA-J-8MF8MF	1	#8 MORS X #8 MORS X #8 MORS BULKHEAD RUN TEE	BULKHEAD #1 POINTED UP
NS	HA-NB-8FF	1	#8 ORS STR THREAD BULKHEAD LOCKNUT	BULKHEAD #1
NS	HA-J-4MF4MF	1	#4 MORS X #4 MORS X #4 MORS BULKHEAD RUN TEE	BULKHEAD #2
NS	HA-NB-4FF	1	#4 ORS STR THREAD BULKHEAD LOCKNUT	BULKHEAD #2
NS	HA-J-4MF4MF	1	#4 MORS X #4 MORS X #4 MORS BULKHEAD RUN TEE	BULKHEAD #3
NS	HA-NB-4FF	1	#4 ORS STR THREAD BULKHEAD LOCKNUT	BULKHEAD #3
NS	HA-J-4MF4MF	1	#4 MORS X #4 MORS X #4 MORS BULKHEAD RUN TEE	BULKHEAD #4
NS	HA-NB-4FF	1	#4 ORS STR THREAD BULKHEAD LOCKNUT	BULKHEAD #4
NS	HA-J-8MF8MF	1	#8 MORS X #8 MORS X #8 MORS BULKHEAD RUN TEE	BULKHEAD #5
NS	HA-NB-8FF	1	#8 ORS STR THREAD BULKHEAD LOCKNUT	BULKHEAD #5
NS	HA-M-8F	1	#8 ORS SWIVEL NUT RUN TEE	BULKHEAD #5 POINTED RIGHT
NS	HA-S-8FF4MF	1	#8 FORS X #4 MORS REDUCER	BULKHEAD #5 RIGHT REAR
NS	HA-J-8MF8MF	1	#8 MORS X #8 MORS X #8 MORS BULKHEAD RUN TEE	BULKHEAD #6
NS	HA-NB-8FF	1	#8 ORS STR THREAD BULKHEAD LOCKNUT	BULKHEAD #6
NS	HA-M-8F	1	#8 ORS SWIVEL NUT RUN TEE	BULKHEAD #6 POINTED LEFT
NS	HA-S-8FF4MF	1	#8 FORS X #4 MORS REDUCER	BULKHEAD #6 LEFT REAR

Model 2950 Hillco Leveling System
For Serial Number 2950-1007

HYDRAULIC ADAPTERS (CONTINUED)

PUMP ADAPTERS				
NS	HA-S-12MO16MF	1	#12 MORB X #16 MORS	PUMP SUCTION
NS	HA-S-10MF10MO	1	#10 MORB X #10 MORS	PUMP PRESSURE
NS	HA-L-6MF4MO	1	#4 MORB X #6 MORS 90°	PUMP LOAD SENSE
NS	HA-Q-6MF6MO	1	#6 MORB X #6 MORS STR THREAD BRANCH TEE	CASE DRAIN AT RESERVOIR
BRAKE LINE ADAPTERS				
NS	HA-133131	2	TEFLON O-RING	LEFT AND RIGHT BRAKE HOSE
RESERVOIR ADAPTERS				
NS	HA-T-6MF6MO	1	#6 MORB X #6 MORS STR THREAD RUN TEE	CASE DRAIN AT RESERVOIR
NS	HA-C-6F	1	#6 FORS CAP	CASE DRAIN AT RESERVOIR
NS	HA-M-16F	1	#16 ORS SWIVEL NUT RUN TEE	SUCTION BY JD FILTER
MASTER CYLINDER ADAPTERS				
NS	HA-L-4MF6MO	1	#4 MORS X #6 MORB 90°	MASTER ROD
NS	HA-L-4MF6MO	1	#4 MORS X #6 MORB 90°	MASTER BASE
SLAVE CYLINDER ADAPTERS				
NS	HA-L-6MF6MO	2	#6 MORS X #6 MORB 90°	SLAVE BASE AND ROD PORTS
MAIN CYLINDER ADAPTERS				
NS	HA-L-8MO8MO	2	#8 MORB X 8 MORB 90°	LEFT AND RIGHT POCV #1
NS	HA-S-8MF8MO	2	#8 MORS X #8 MORB STR	POCV #2
NS	HA-L-4MF8MO	2	#4 MORS X #8 MORB 90°	POCV #3
NS	HA-S-4MF6MO	2	#4 MORS X #6 MORB STR	POCV #4
NS	HA-L-8MF8MO	1	#8 MORS X #8 MORB 90°	RIGHT MAIN CYLINDER ROD END
NS	HA-L-8MF8MO	1	#8 MORS X #8 MORB 90°	RIGHT POCV #2
HEADER LIFT CYLINDER ADAPTERS				
NS	HA-L-8FF8MF	2	#8 FORS X #8 MORS 90°	HEADER LIFT CYLINDERS

Model 2950 Hillco Leveling System
For Serial Number 2950-1007

9 MISCELLANEOUS

DOCUMENTS AND LABELS				
REF.	PART NO.	QTY.	PART NAME	NOTES
NS	LL-133731	5	LABEL, GREASE 10 HR	
NS	LL-138441	1	DECAL, CAB CONTROL BOX	
NS	LL-142091	2	DECAL, JD HILLSIDE LEVELING SYSTEM	
NS	LL20-100782	1	LABEL, SAFETY	CAUTION, LEVELING SYSTEM CAB
NS	LL20-100783	6	LABEL, SAFETY	DANGER, CRUSHING HAZARD
NS	LL20-100784	2	LABEL, SAFETY	DANGER, PINCH POINT
NS	LL20-100785	1	LABEL, SAFETY	CAUTION, MOVING STEP
NS	LL20-100786	1	WARNING ELECTRONIC CRUSHING HAZARD	FRONT OF CONTROL BOX
NS	LL20-100786	1	LABEL, SAFETY	WARNING, ELECTRONIC CRUSHING HAZARD
NS	LL20-100787	2	LABEL, SAFETY	CAUTION, LEVELING SYSTEM HAZARD
NS	LL20-100788	3	LABEL, SAFETY	DANGER, HYDRAULIC HAZARD
NS	LL20-100790	1	SERIAL NUMBER PLATE	
NS	D-020830DJC01	1	MANUAL, INSTALLATION	
NS	D-020903CLA01	1	MANUAL, OPERATORS	
NS	D-060915ADL01	1	MANUAL, PARTS 2950 (1007)	
MISCELLANEOUS HOSE CLAMPS AND FASTENERS				
REF.	PART NO.	QTY.	PART NAME	NOTES
NS	F-HC-08M120F	1	HC-8.8 M8 X 1.25 X 120	TRIM RELIEF VALVE TO BEHRINGER CLAMP
NS	F-HNN-08MF	1	HN-8.8 M08 X 1.25 NYLOCK	TRIM RELIEF VALVE TO BEHRINGER CLAMP
NS	F-HC-08M090F	2	HC-8.8 M8 X 1.25 X 90	BEHRINGER CLAMPS FOR HYDRO HOSES
NS	F-HNF-08MF	2	FLHN-8.8 M8 X 1.25	BEHRINGER CLAMPS FOR HYDRO HOSES
NS	MC-137521	2	BEHRINGER TWIN CLAMP 1.5" DIAMETER	HYDROSTAT HOSES
NS	MC-137531	2	BEHRINGER TWIN COVER PLATE FOR 1.5"	HYDROSTAT HOSES
NS	MC-135781	2	2" R/C HOSE CLAMP 3/8" HOLE	HEADER LIFT CYLINDER HOSES
NS	MC-135791	5	7/8" R/C HOSE CLAMP 3/8" HOLE	HEADER LIFT CYLINDER HOSES
NS	MC-135231	3	1/2" R/C HOSE CLAMP 3/8" HOLE	GREASE HOSE MNTS
NS	MC-135631	1	1-1/2" R/C HOSE CLAMP 3/8" HOLE	GREASE HOSE MNTS

Model 2950 Hillco Leveling System
For Serial Number 2950-1007

10 PART NUMBER INDEX

PART NUMBER	PAGE NUMBER	PART NUMBER	PAGE NUMBER	PART NUMBER	PAGE NUMBER
D-020830DJC01	9-1	F-HC-24M070E	4-2	HA-J-8MF8MF	8-9
D-020903CLA01	9-1	F-HC-24M110E	4-2	HA-L-10FF10MF	8-9
D-060915ADL01	9-1	F-HC5-04C12	7-2	HA-L-2FP2MP	8-8
EC-100557	7-2	F-HC8-06C20	8-6	HA-L-4FF4MF	8-9
EC-100692	7-2	F-HC8-07C44	8-2	HA-L-4MF6MO	8-10
EC-133281	7-4	F-HC8-08F20	2-6	HA-L-4MF8MO	8-10
EC-136621	7-4	F-HC8-12C256	3-4	HA-L-6MF4MO	8-10
EC-136631	7-4	F-HCF-06M045F	5-2	HA-L-6MF6MO	8-10
EC-136651	7-4	F-HCF-10M020E	2-4, 3-4	HA-L-8FF8MF	8-10
EC-136661	7-4	F-HCF-10M020F	2-4	HA-L-8MF8MO	8-9, 8-10
EC-136681	7-4	F-HCF-10M025F	6-2	HA-L-8MO8MO	8-10
EC-136711	7-4	F-HCF-10M040E	8-6	HA-M-16F	8-10
EC-136731	7-4	F-HCF-12M025F	3-4	HA-M-8F	8-9
EC-136741	7-4	F-HCF-12M040E	2-4	HA-NB-4FF	8-9
EC-138781	7-2	F-HCF-12M080E	2-4	HA-NB-8FF	8-9
EC-139631	7-4	F-HCF-16M040E	2-4	HA-NJ-2FN	8-8
EC-139641	7-4	F-HCF-16M080E	3-4	HA-P-6MO	8-9
EC-140891	7-4	F-HN-#10C	7-2	HA-Q-6MF6MO	8-10
EC-141741	7-4	F-HN8-07C	8-2	HA-S-10MF10MO	8-9, 8-10
EC-141751	7-4	F-HNF-#10C	7-2	HA-S-12MO16MF	8-10
EC-141761	7-4	F-HNF-04C	7-2	HA-S-2MN2FP	8-8
EC-141771	7-4	F-HNF-05C	8-4	HA-S-4FP10MO	8-9
EC-141781	7-4	F-HNF-08MF	3-4, 6-2, 9-1	HA-S-4MF4MO	8-9
EC-141791	7-4	F-HNF-10ME	3-4, 8-6	HA-S-4MF6MO	8-10
EC-141801	7-4	F-HNF-10MF	2-4, 3-4, 6-2, 7-2	HA-S-4MF8MO	8-9
EC-141811	7-4	F-HNF-12MF	2-4	HA-S-8FF4MF	8-9
EC-141821	7-4	F-HNJ-05C	6-2	HA-S-8MF8MO	8-10
EC-141831	7-2	F-HNJ-12MF	2-4	HA-T-4MF4MO	8-9
EC-142121	7-2	F-HNN-08MF	9-1	HA-T-6MF6MO	8-10
ET-ST-20#10	7-4	F-HNN-10MF	8-6	HC-100706	2-2, 8-2
ET-ST-2004	7-4	F-HNN-12MF	8-6	HC-100805	8-2
ET-ST-2005	7-4	F-HNS-12C	3-4	HC-101021	8-4
F-CB-10M030F	2-4	F-HNS-12ME	4-2, 6-2, 8-6	HC-101022	8-4
F-CB-12M040F	2-4	F-HNS-16ME	2-4, 3-4, 4-2	HC-101038	8-4
F-EYB-12M100F	8-6	F-HNS-20ME	5-2	HC-101264	8-4
F-FHS-8M015E	2-4	F-HNS-24ME	4-2	HC-101265	3-2, 8-2
F-FWF-06020	3-4	F-HNSF-12ME	2-4	HC-101842	3-2, 8-2
F-FWH-08	2-4, 8-6	F-LW-#10	8-4	HC-101843	8-2
F-FWH-10	3-4, 4-2	F-LW-04	7-2	HC-102068	8-2
F-HC-08M025F	6-2	F-LW-05	6-2	HC-102082	8-4
F-HC-08M035F	6-2	F-LW-06A	8-6	HC-102125	8-2
F-HC-08M090F	3-4, 9-1	F-LW-08A	2-6	HC-103099	8-6
F-HC-08M120F	9-1	F-MB-10NR20	3-4	HC-103228	3-2, 8-2
F-HC-10M025F	3-4, 7-2	F-MB-14NR40	2-4	HC-133151	8-6
F-HC-10M040F	3-4	F-MB-18NR24	4-2	HC-134191	2-2, 8-2
F-HC-10M110E	8-6	F-PCT-05X48	3-4	HC-134201	8-2
F-HC-10M200E	8-6	F-PHM-#10C16	7-2	HC-134251	8-2
F-HC-12M030F	6-2	F-PHM-#10C28	7-2	HC-134911	8-2
F-HC-12M040E	8-6	F-PHM-#6C06	7-2	HC-135231	8-6
F-HC-12M050E	6-2	F-PHM-04C24	7-2	HC-135241	8-6
F-HC-12M060F	8-6	F-PHM-04C36	7-2	HC-135251	8-6
F-HC-12M065F	6-2	F-SHC-#10C52	8-4	HC-135761	8-8
F-HC-12M080E	4-2	F-SHC-10M070F	2-4	HC-135771	8-8
F-HC-16M050E	2-4	F-SSS-04F04	8-2	HC-137061	8-6
F-HC-16M060E	3-4	F-SSS-06C08	2-6	HC-137891	8-2
F-HC-16M120E	2-4	F-UDS-#7X06	3-4	HC-137901	8-2
F-HC-16M140E	4-2	HA-133131	8-10	HC-138011	8-8
F-HC-16M180E	3-4	HA-A-10MO	8-9	HC-138691	8-2
F-HC-20M160E	5-2	HA-C-6F	8-10	HC-138851	8-4
F-HC-20M210E	5-2	HA-J-4MF4MF	8-9	HC-138881	8-4

Model 2950 Hillco Leveling System
For Serial Number 2950-1007

PART NUMBER INDEX (CONTINUED)

PART NUMBER	PAGE NUMBER	PART NUMBER	PAGE NUMBER	PART NUMBER	PAGE NUMBER
HC-138891	8-4	LA-230551	3-2	LM-236473	3-2, 7-2
HC-139871	8-4, 8-9	LA-234952	2-2	LM-236611	8-6
HC-139881	8-4	LA-235371	8-6	LM-236632	6-2
HC-139901	8-9	LA-235381	8-6	LM-238341	2-2
HC-139911	8-9	LA-236542	6-2	LM-241271	6-2
HC-139921	8-9	LA-236552	6-2	LM-249701	8-4
HC-140291	8-4	LA-236563	6-2	LM-249861	2-2
HC-140411	8-4	LA-238691	6-2	LM-250111	8-4
HC-141351	8-2, 8-4	LA-238761	6-2	LM-250121	8-4
HC-141361	8-2	LA-238881	5-2	LM-250131	8-4
HC-141531	8-6	LA-240161	6-2	LM-255331	7-2
HC-142731	8-4	LA-240412	3-2	LM-255341	7-2
HC-142761	8-4	LA-240461	3-2	LP-103871	3-2
HC-143231	8-6	LA-240481	4-2	LP-230241	3-2
HC-143241	8-6	LA-240511	3-2	LP-232162	2-2
HC-143251	8-6	LA-243071	2-2	LP-234572	3-2
HC-143951	8-4	LA-249062	7-6	LP-235311	8-6
HC-143961	8-4	LA-249611	2-2	LP-249871	2-2
HC-143971	8-4	LA-252462	7-6	LP-255131	2-2
LA-130312	8-7	LA-255621	7-6	LS-212701	2-2
LA-130332	8-7	LA-255631	7-6	LS-235291	8-6
LA-130332	8-7	LA-255821	7-2, 7-6	LS-244471	2-2, 2-6
LA-130342	8-7	LA-257231	7-6	LTA- 242281	7-6
LA-130371	8-7	LA-257301	7-6	LTA-242271	7-6
LA-130402	8-8	LA-257311	7-6	LTP-241721	2-2
LA-130462	8-8	LA-257371	7-2	MC-100237	2-2
LA-130472	8-8	LA-259551	8-6	MC-100546	2-2
LA-130762	8-7	LA-259701	7-6	MC-100548	2-2
LA-130771	8-7	LA-259711	8-4	MC-101339	2-2
LA-130881	8-7	LA-260401	8-6	MC-134281	3-2
LA-133912	8-7	LA-262131	8-6	MC-134291	3-2
LA-133922	8-7	LL-133731	9-1	MC-134321	8-6
LA-133932	8-7	LL-138441	9-1	MC-134331	8-6
LA-133942	8-7	LL-142091	9-1	MC-134341	8-6
LA-133952	8-7	LL20-100782	9-1	MC-134351	8-6
LA-135051	8-7	LL20-100783	9-1	MC-134361	8-6
LA-135061	8-7	LL20-100784	9-1	MC-134921	6-2
LA-135071	8-7	LL20-100785	9-1	MC-134931	6-2
LA-135081	8-7	LL20-100786	9-1	MC-134941	6-2
LA-135091	8-7	LL20-100787	9-1	MC-135231	9-1
LA-136021	8-8	LL20-100788	9-1	MC-135431	4-2
LA-136031	8-8	LL20-100790	3-2, 9-1	MC-135491	2-2
LA-136041	8-8	LM-226532	2-2, 2-6	MC-135501	2-2
LA-136051	8-8	LM-226841	2-2	MC-135511	2-2
LA-136061	8-8	LM-229142	2-2	MC-135531	2-2
LA-136071	8-8	LM-229152	2-2	MC-135631	9-1
LA-136081	8-8	LM-229161	2-2	MC-135781	9-1
LA-136091	8-8	LM-229171	2-2	MC-135791	9-1
LA-136101	8-8	LM-229192	2-2	MC-136251	8-6
LA-136111	8-8	LM-229483	3-2	MC-136921	2-2, 2-6
LA-136121	8-8	LM-230611	3-2	MC-137521	9-1
LA-228702	4-2	LM-230621	3-2	MC-137531	9-1
LA-228762	4-2	LM-230631	3-2	MC-139241	2-2
LA-228811	5-2	LM-230641	3-2	MC-139341	2-2
LA-228893	2-2	LM-234101	4-2	MC-139351	2-2
LA-229022	2-2	LM-235281	8-6	MC-139361	2-2
LA-229051	2-2	LM-235821	8-6	MC-139371	2-2
LA-229071	2-2, 3-2	LM-235831	8-6	MC-142001	2-2
LA-229251	3-2	LM-236053	6-2		
LA-229293	8-4	LM-236232	2-2		