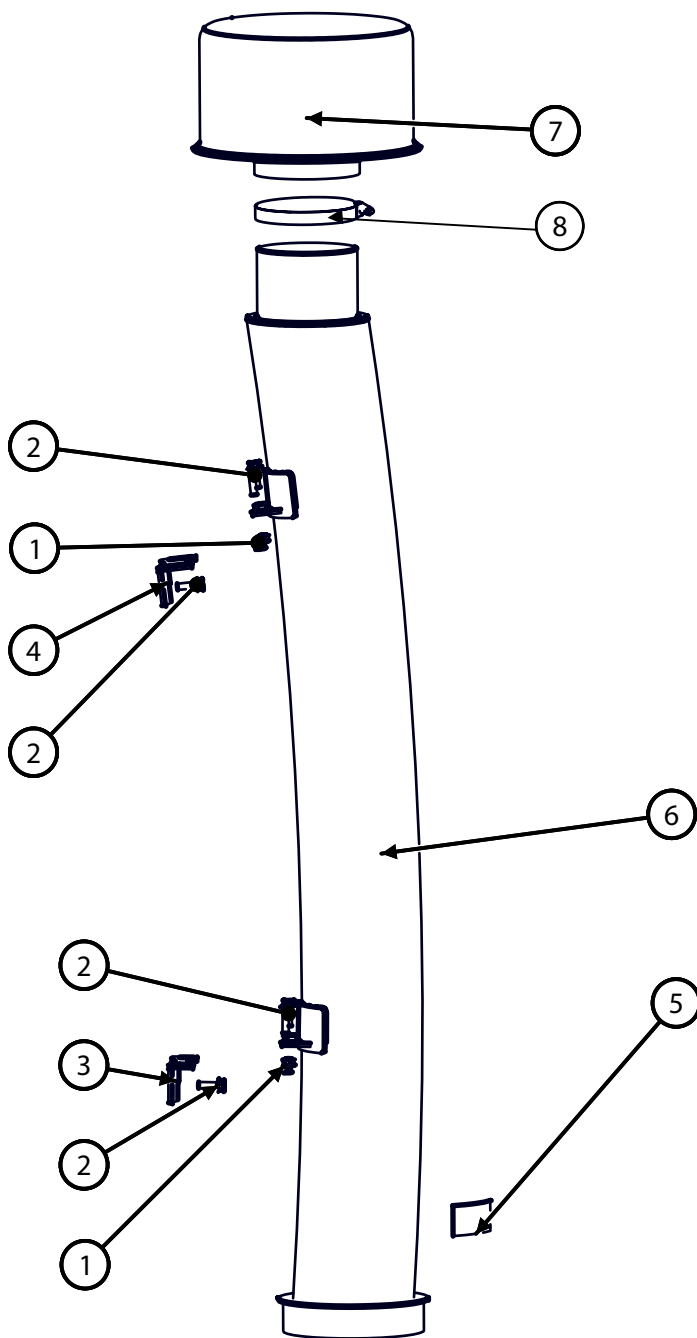




Hillco Air Intake Install Manual

for Magnum Tier4A Tractors
Models 235, 260, 290, 315, 340 & 390

D-151211CMA01
December, 2015

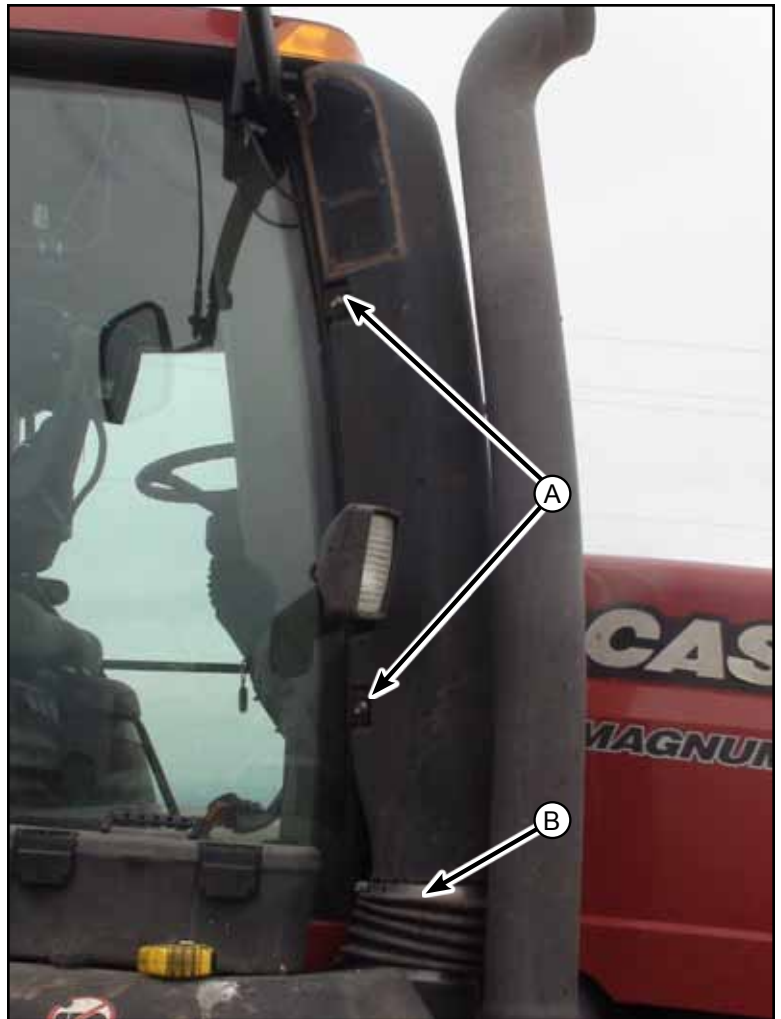


BOM ID	Part Number	Qty	Description
1	123.008	4	NUT HEX FLANGE M8
2	122.008.025	6	BOLT,HX,FL,CL10.9 M8x215
3	1329421	1	MOUNT, CAB, MAGNUM T4A
4	1331161	1	MOUNT, CAB, MAGNUM T4A
5	155516	1	HILLCO LOGO DECAL
6	1329451	1	TUBE, MAGNUM T4A
7	155485	1	EX-50 PRECLEANER, BLACK
8	5" Clamp	1	T-BOLT CLAMP TO FIT 5" OD TUBE

Remove the original pre-cleaner by removing the two sets of bolts that secure the pre-cleaner to the cab (A).

Loosen the clamp (B) at the bottom of the pre-cleaner. Remove pre-cleaner. The clamp will be reused.

Remove the metal mounts from the cab. Discard the mounts. Discard the bolts that secure the metal mounts to the cab. New Bolts are provided.

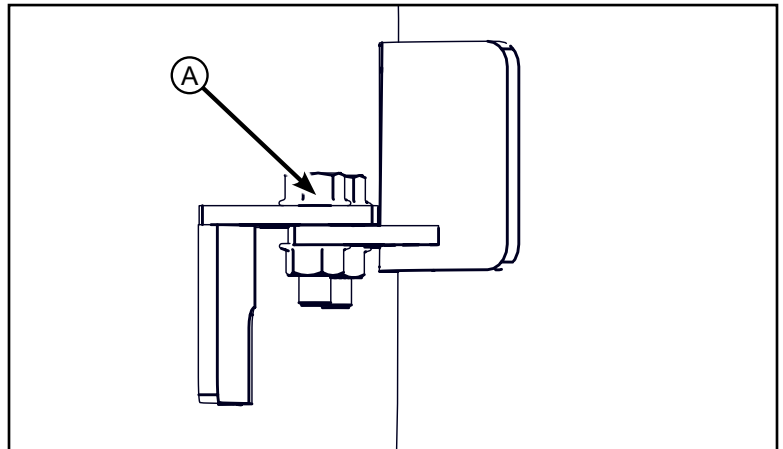


Use a torx screw driver to remove the top mount. You may need to hold the threaded insert with a vice grips to prevent it from turning.



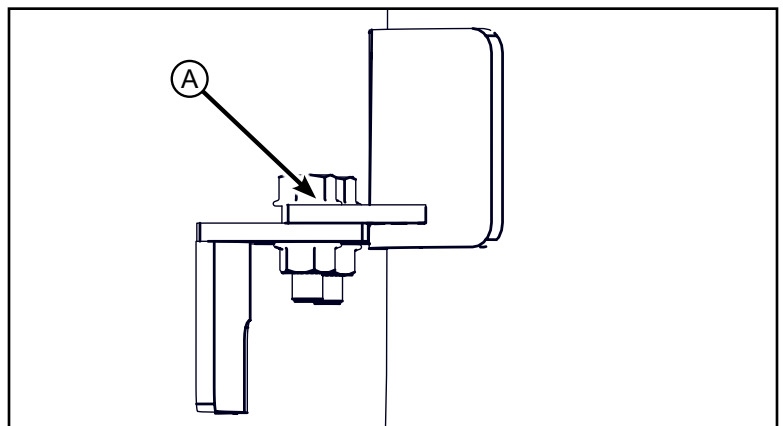
Secure the top mount to the intake tube. Secure it above the bracket as shown. Secure with two M8 x 25 fasteners provided (A). Leave the two bolts in the slotted holes loose so they can be adjusted later.

Top Mount



Secure the Bottom mount to the intake tube. Secure it below the bracket as shown. Secure with two M8 x 25 fasteners provided (A). Leave the two bolts in the slotted holes loose so they can be adjusted later.

Bottom Mount



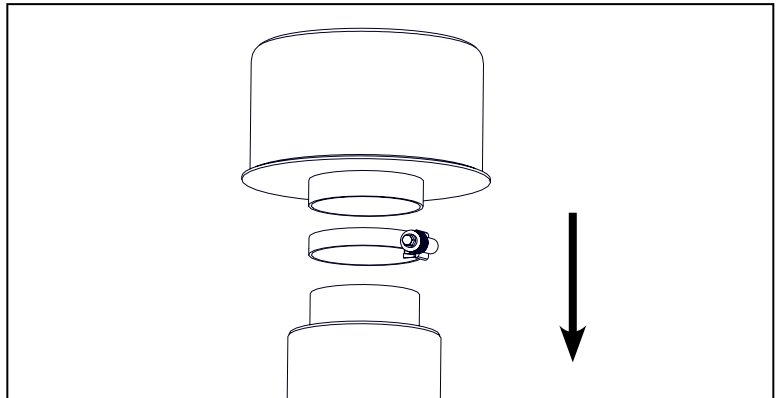
Start a M8 x 25 bolt (b) into the two original mounting locations on the cab cornerpost. Leave the bolts loose.



Hang the intake tube onto the two bolts that were previously installed.

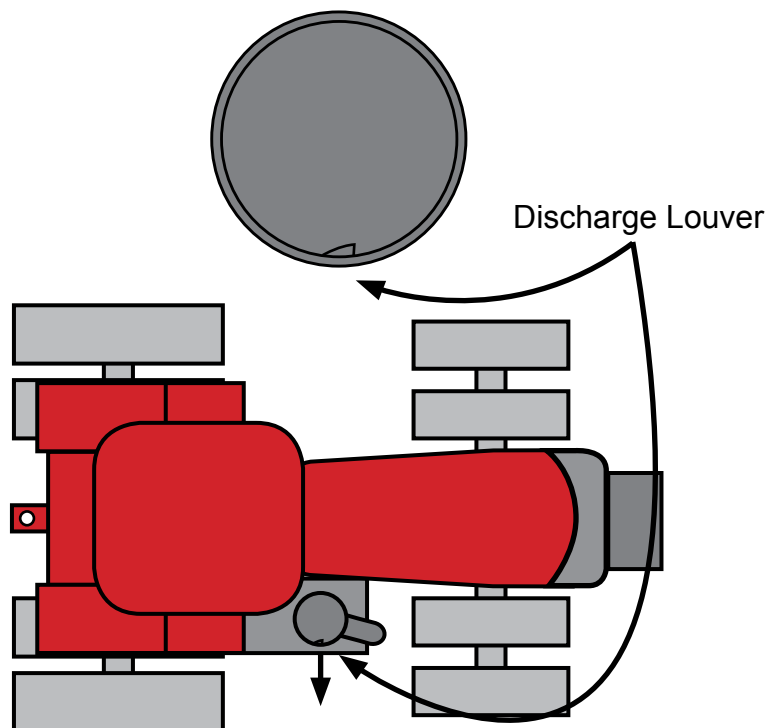


Install the pre-cleaner to the intake tube. Press the intake all the way down onto the tube. Make sure that the slits in the pre-cleaner are covered so that all air entering has to go through the pre-cleaner.

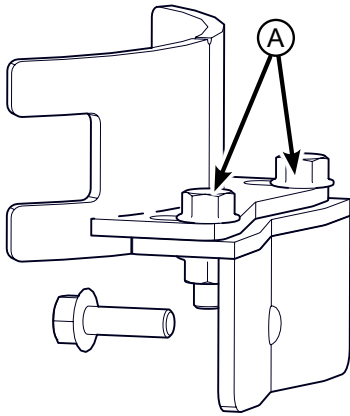


Locate the discharge louver on the side of the pre-cleaner. Rotate the pre-cleaner on the intake tube so that the discharge louver is point to the outside of the tractor.

Secure pre-cleaner to intake with the provided 7" clamp. Tighten to 7.5 ft/lbs (90 in. lbs or 1.0369 kg-m)



Position the air cleaner so that there is 3/8" clearance between the top of the air cleaner and the cab. Tighten the bolts in the slotted holes (A) to secure the intake in position.



Install the intake tube into the rubber boot (A). Tighten the boot with the original clamp.



If the exhaust is closer than 1/2" to the pre-cleaner move it outward. To do this loosen the clamping bolt at the base of the exhaust. Move the exhaust outward and tighten the clamping bolt.

This completes the install.



Hillco Technologies, Inc.
800-937-2461
1010 1st Avenue, Nezperce, Idaho