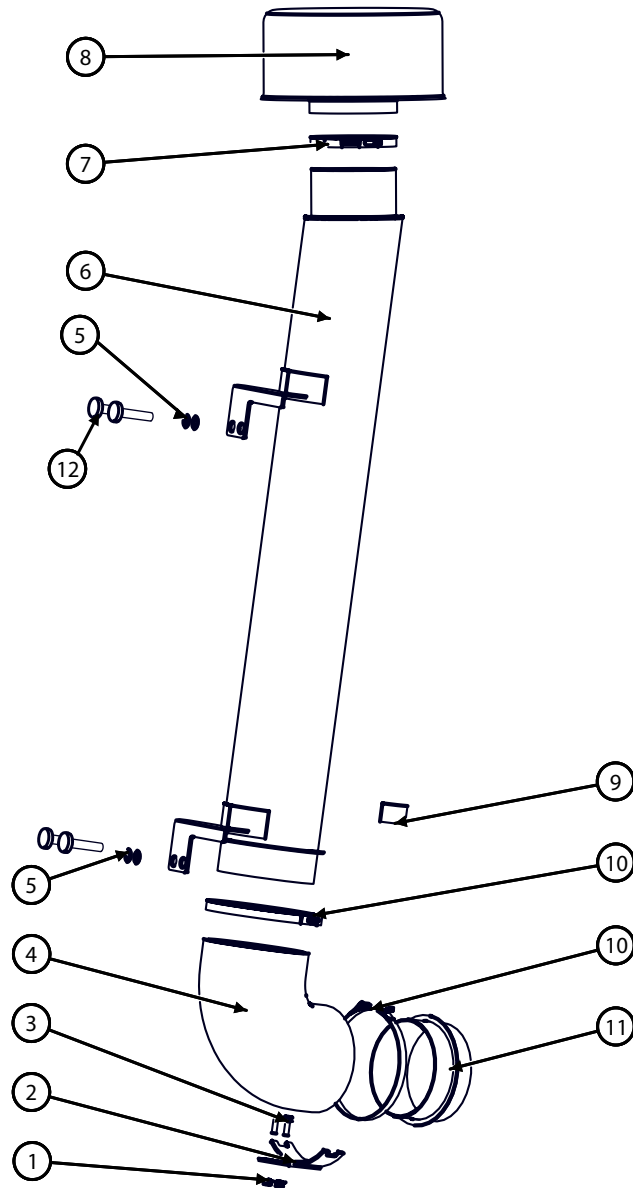




Hillco Air Intake Install Manual

for Steiger Tier4A Tractors
Models 450 QT, 500, 500 QT, 550, 550 QT, 600, & 600

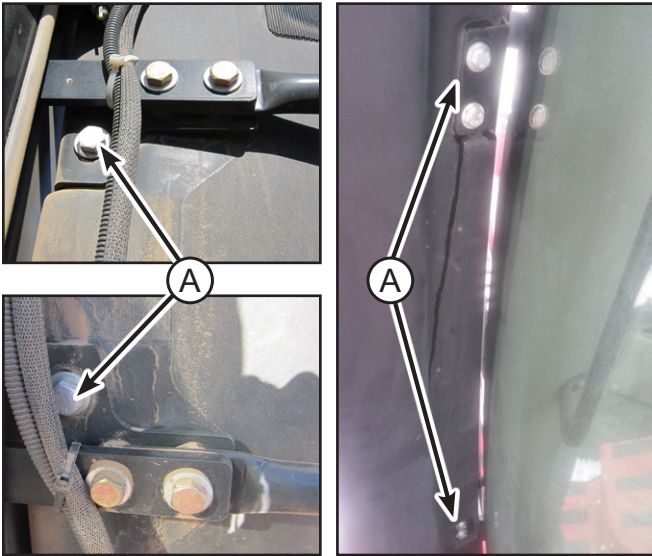
D-151214CMA01
December, 2015



BOM ID	Part Number	Qty	Description
1	123.01	2	NUT,FLANGE,M10
2	1328761	1	MOUNT, ELBOW,
3	122.010.030	2	BOLT,HX,FL,CL10.9 M10X30
4	155490	1	8" 90° ELBOW, RUBBER
5	133.012	4	WASHER,L9,HD 3/4
6	1328661	1	MAIN TUBE,
7	155510	1	T-BOLT CLAMP TO FIT 7" OD TUBE
8	155483	1	EX-70 PRECLEANER, BLACK
9	155516	1	HILLCO LOGO DECAL
10	155512	2	T-BOLT CLAMP TO FIT 9" OD TUBE
11	1328781	1	CONNECTOR, 8 INCH
12	122.010.050	4	BOLT,HX,FL,CL10.9 M10X30

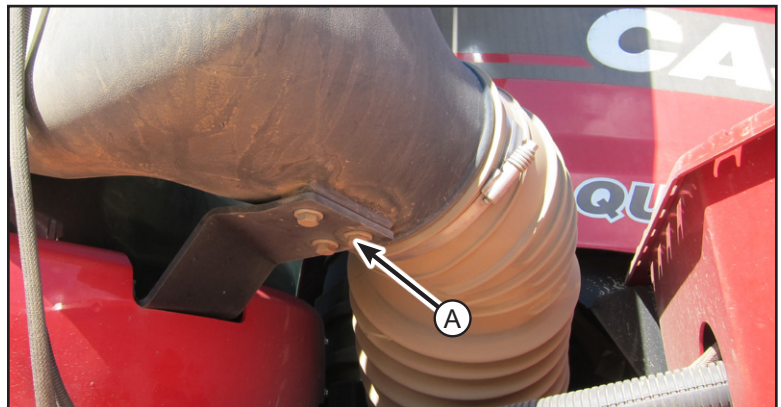
Remove the original plastic air intake tube by removing the bolts that secure the intake to the cab (A). Discard fasteners.

Loosen the clamp at the bottom of the air intake tube. The clamp will be reused.



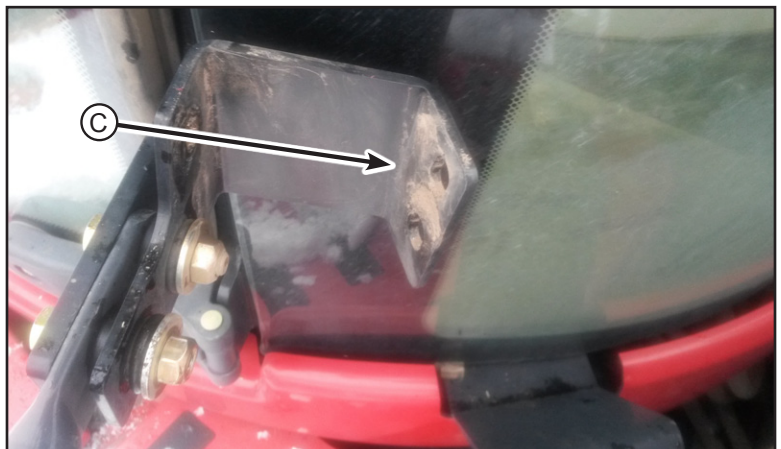
Remove the 3 bolts that secure the bottom of the air intake to the mount.

Remove plastic air intake tube.

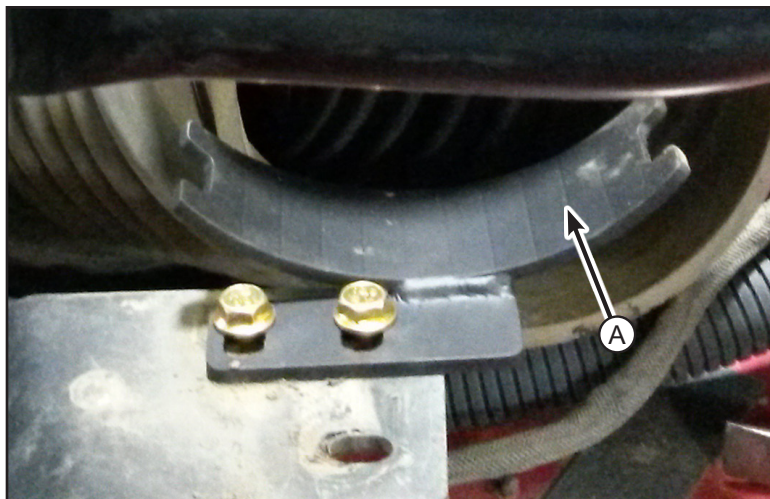
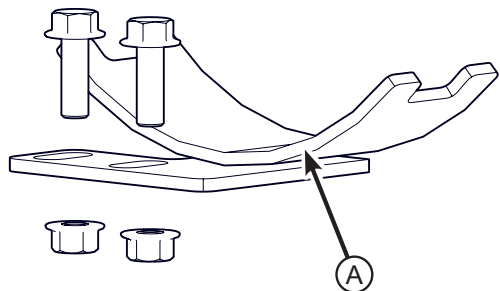


Remove the air intake mounts (C) from the handrail mounts. The mounts may be frozen to the isolators. Use a prybar to remove the mount. The isolator and other fasteners will be reused.

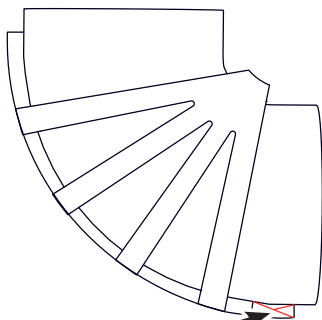
Note: Do not grab onto the handrail as it is not secured.



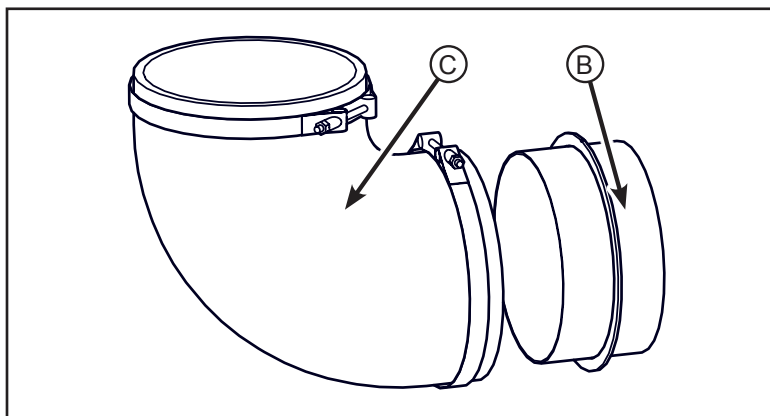
Secure the bottom mount (A) to the original mount using the two M10 x 30 bolts. Do not tighten at this time. The rubber elbow will sit on this mount.



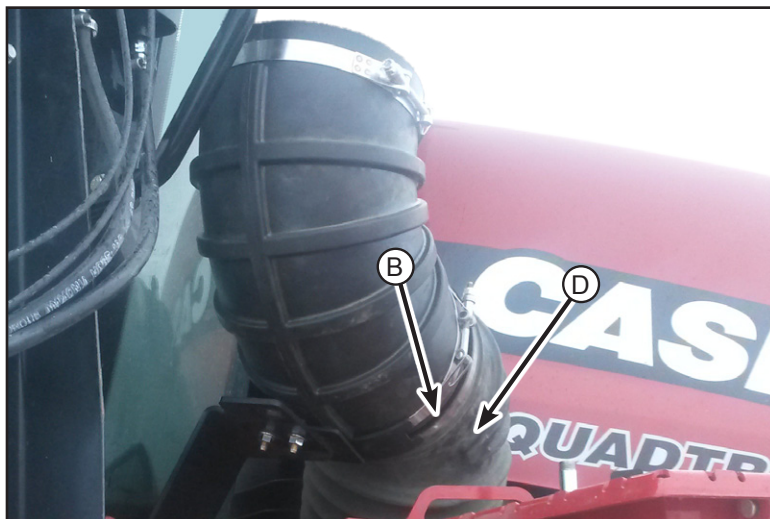
Install the adapter (B) to the elbow (C) with the notched end to the clamp. Install a clamp around the elbow and tighten. The bottom of the rib has been notched to not interfere with the cradle.



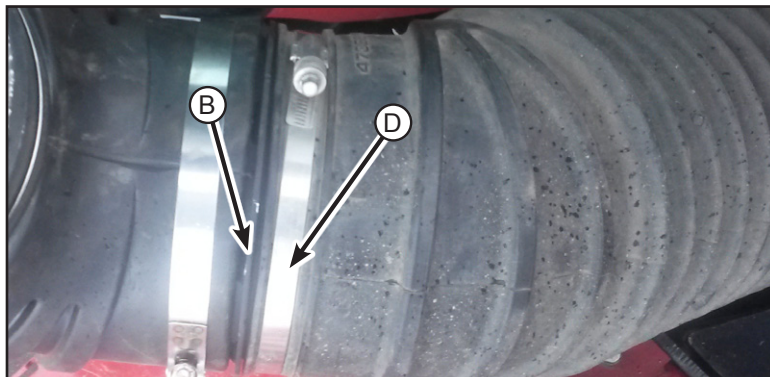
Notched Rib



Install the elbow to the tractor. Insert the adapter (B) into the original intake tube (D) and set the elbow on the bottom mount.



Do not tighten the original clamp (D) because the elbow may need to be rotated when installing the intake tube.



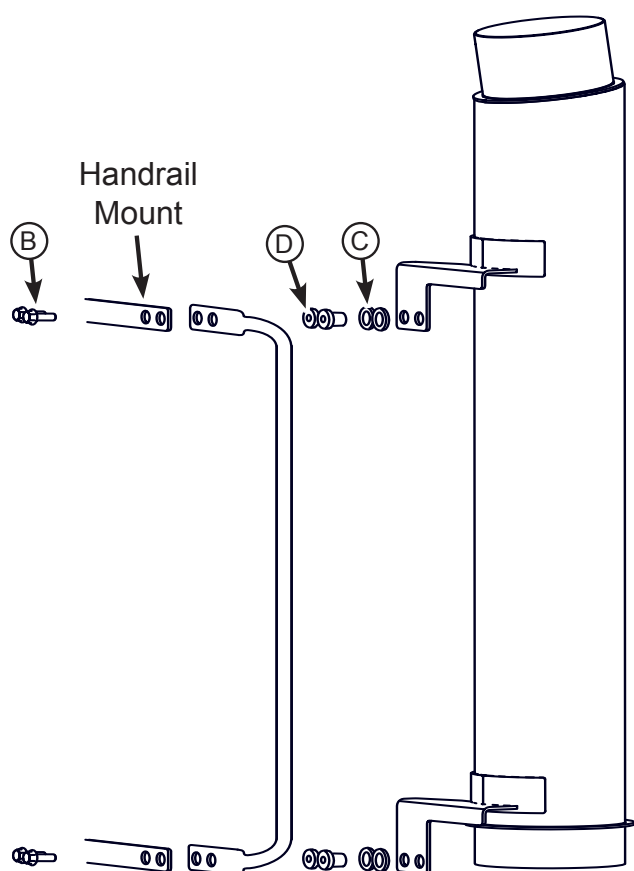
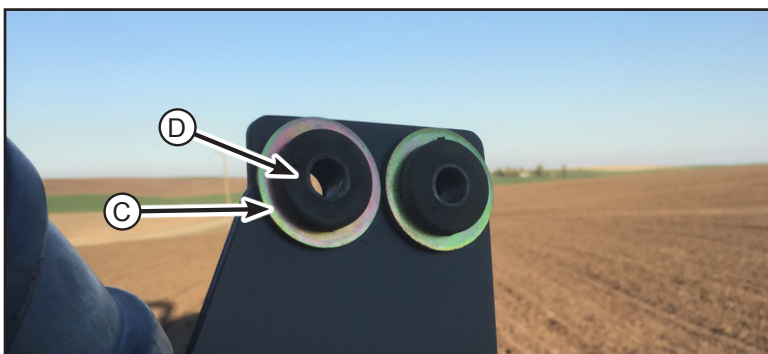
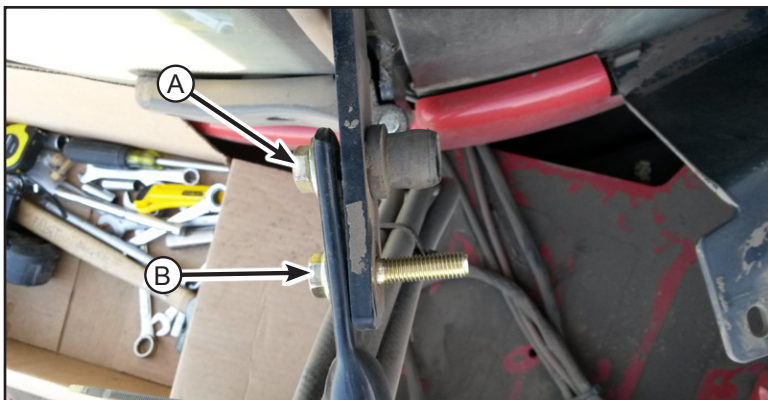
Replace the M10 X 40 bolts (A) on the handle bar bracket with M10 X 50 bolts (B).

Discard M10 X 40 Bolts. Remove the rubber isolators.

Install the 3/4 inch ID washers (C) over isolators (D) and then insert the isolators into the holes in the hillco intake tube. Do this for all 4 isolators. See below diagram

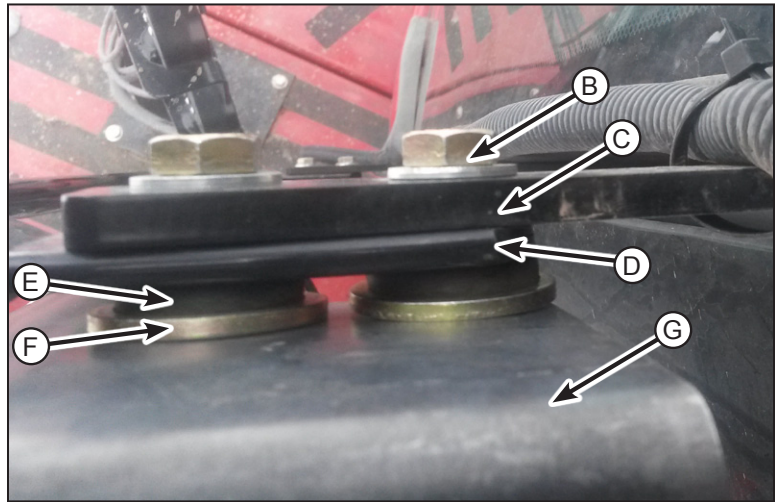
The washers will take up space so that when the Hillco Airflow system is installed it is tightly secured to the handrail mounts.

Install the intake tube into the bottom boot. Then align the four mounting holes on the intake tube to the front side of the four handrail mounting bolts as shown. See pictures on the following page.



This is a view from the back side of the mounts.

- B - Original Bolts and Washers
- C - Cab Mounts
- D - Handrail
- E - Rubber Isolator
- F - Hillco 3/4 inch ID Washer
- G - Hillco Intake Mount

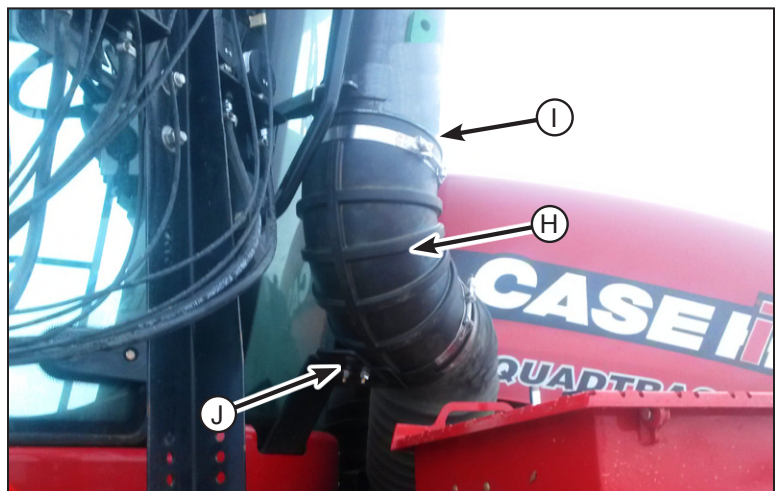
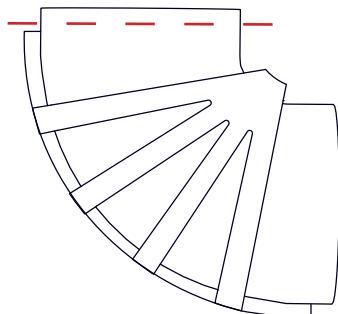


Secure the intake mounts with the original washers and nuts. Tighten to prevailing torque.

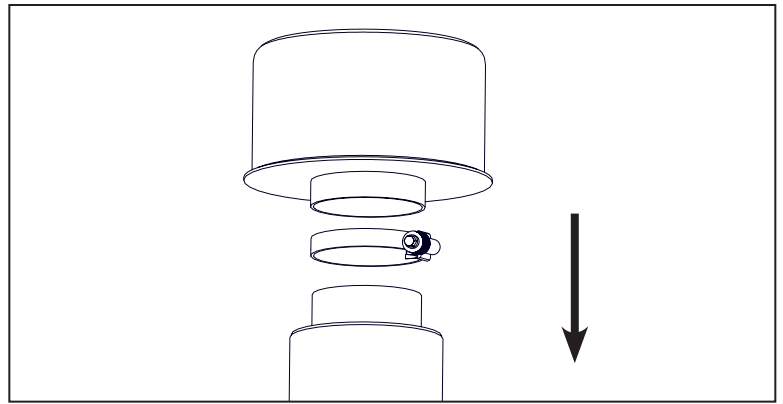
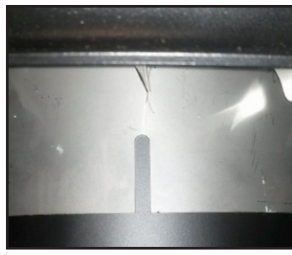


Make sure the rubber elbow (H) is all the way up to the ring on the intake tube (I). Tighten the clamp. Tighten the bolts on the bottom support (J).

It may be necessary to trim part of the top of the rubber boot if it does not fit properly between the intake tube and the bottom support (J).

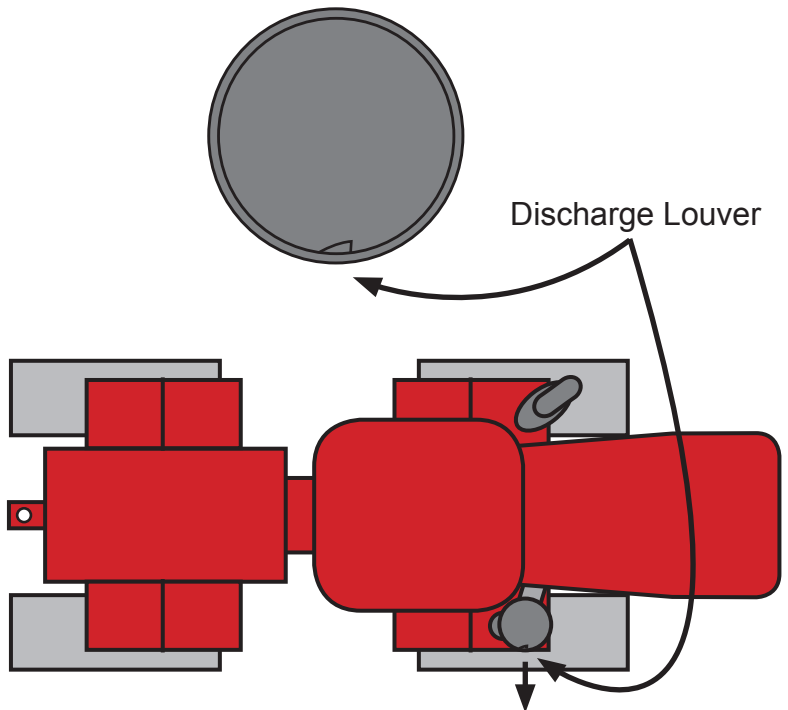


Install the pre-cleaner to the intake tube. Press the intake all the way down onto the tube. Make sure that the slits in the pre-cleaner are covered so that all air entering has to go through the pre-cleaner.



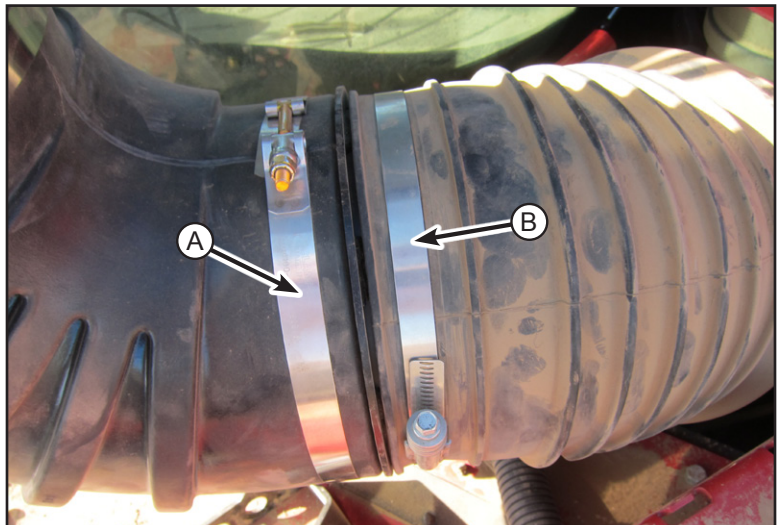
Locate the discharge louver on the side of the pre-cleaner. Rotate the pre-cleaner on the intake tube so that the discharge louver is point to the outside of the tractor.

Secure pre-cleaner to intake with the provided 7" clamp. Tighten to 7.5 ft/lbs (90 in. lbs or 1.0369 kg-m)



Tighten the bottom clamp (A) on the rubber elbow and the original clamp (B) securing the adapter to the intake tube.

For maximum performance with your Hillco Air Flow System, install a new air filter element, check air intake system for leaks or damage and repair as necessary.



This completes the install.

Hillco Technologies, Inc.
800-937-2461
1010 1st Avenue, Nezperce, Idaho