

Model 2810
Hillside Leveling System
Parts Manual

SN 2810-1004 thru 2810-1011

D-050708ADL01A





2810 Leveling System
for AFX 8010 Combines

TABLE OF CONTENTS

1 GENERAL INFORMATION	1-3
Serial Number Location	1-3
Text Format and Illustrations	1-3
Abbreviations.....	1-3
Right and Left Identification	1-3
Parts Orders	1-3
2 TRANSITION	2-1
Radial Pin Slip Clutch.....	2-3
Transition Fasteners.....	2-5
Wheel, Wheel Spacer & Wheel Washer	2-7
3 CARRIAGE	3-1
Carriage Fasteners.....	3-3
4 DROP AXLE	4-1
5 LADDER	5-1
6 ELECTRICAL	6-1
Electrical Connectors and Cables	6-3
7 HYDRAULICS	7-1
Hydraulic Manifold.....	7-3
Hydraulic Hoses	7-5
Hydraulic Adapters	7-6
8 MISCELLANEOUS	8-1
9 PART NUMBER INDEX	9-1
Part Number Index (Continued).....	9-2

Model 2810 Hillco Leveling System
For Serial Numbers 2810-1004 thru 2810-1011

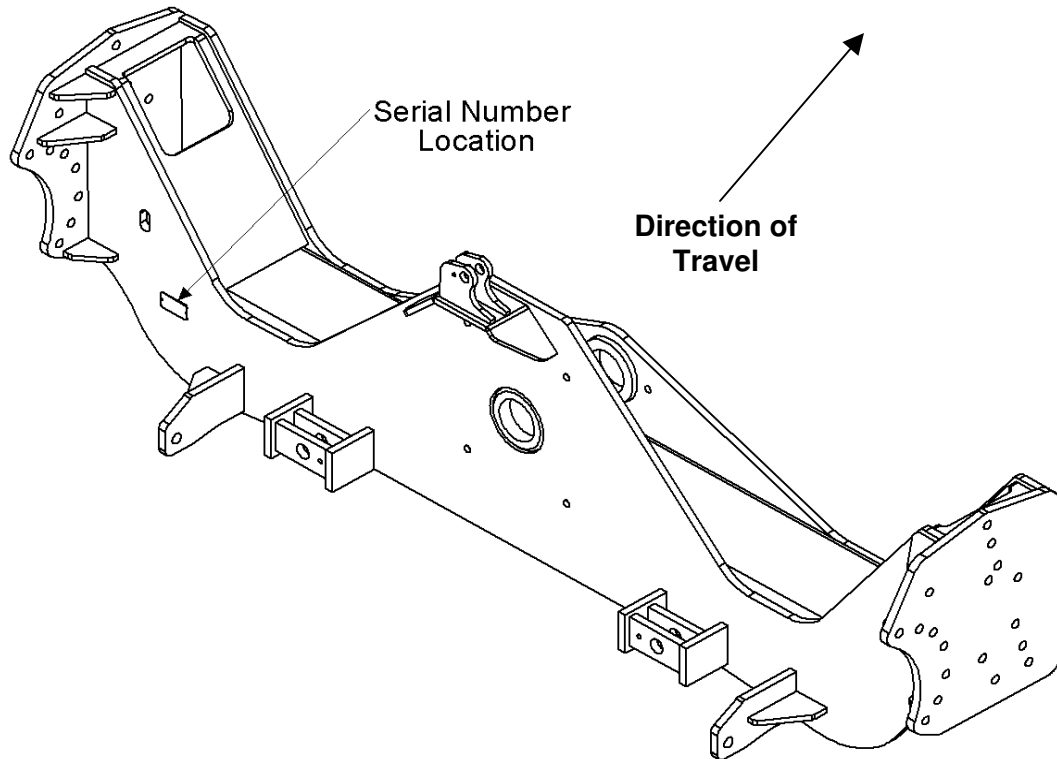
Hillco Technologies, Inc.
107 1st Avenue
Nezperce Id. 83543

Fax	208.937.2280
Phone	208.937.2461
Toll Free	800.937.2461

www.hillcotechnologies.com

1 GENERAL INFORMATION

SERIAL NUMBER LOCATION



TEXT FORMAT AND ILLUSTRATIONS

The arrangement of this parts catalog is for easy identification of parts. All parts are illustrated in exploded views in proper relation to each other. Some diagrams refer to other pages for further information. Reference numbers used in the illustrations refer to line numbers in the part lists. The part lists appear to the right of all diagrams and correspond with those diagrams. Included in the part lists, along with the reference numbers are part numbers, part descriptions and the quantity of the part required per leveling system.

ABBREVIATIONS

SN "Serial Number" The four digits shown in the SN column refer to the last four digits in the Hillco serial number. Each Model 2810 system uses the following format::
2810-XXXX (sequential numbers).

ASM "Assembly" refers to a whole grouping of parts (usually shown in the diagram corresponding with the page where "ASM" is shown).

NS "Not Shown" refers to a part that is not depicted in the illustration.

RIGHT AND LEFT IDENTIFICATION

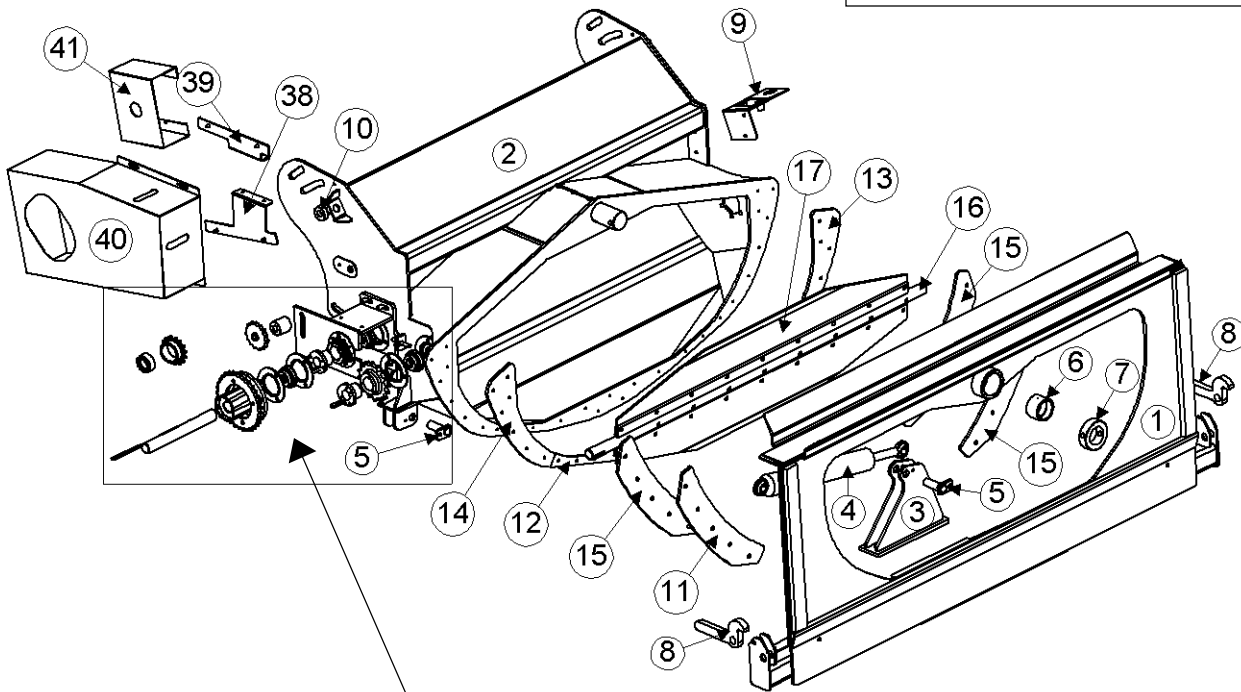
The reference to right-hand and left-hand in this catalog is identified by the operator standing at the rear of the machine looking toward the front of the machine (in normal forward travel).

PARTS ORDERS

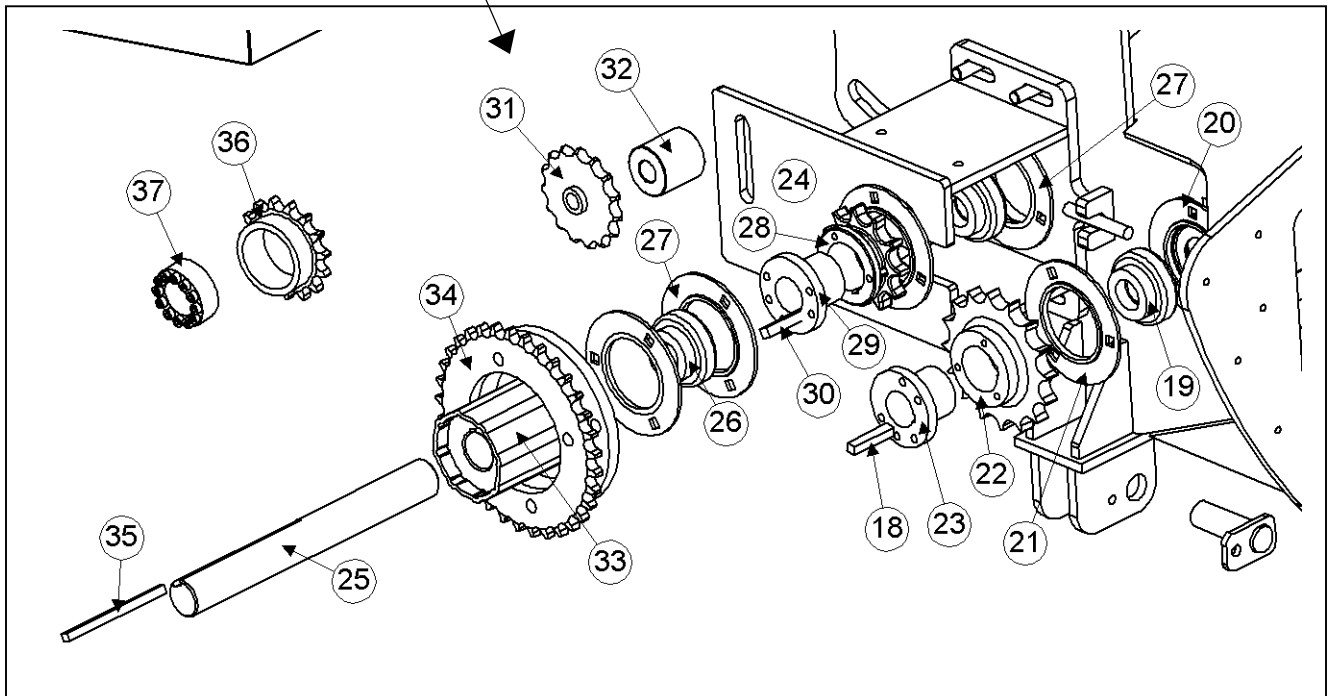
Orders must specify product model, serial number, correct part number, complete description, quantity required, method of shipment, shipping address, and billing address.

2 TRANSITION

SEE PAGE 2-5 FOR
TRANSITION FASTENERS



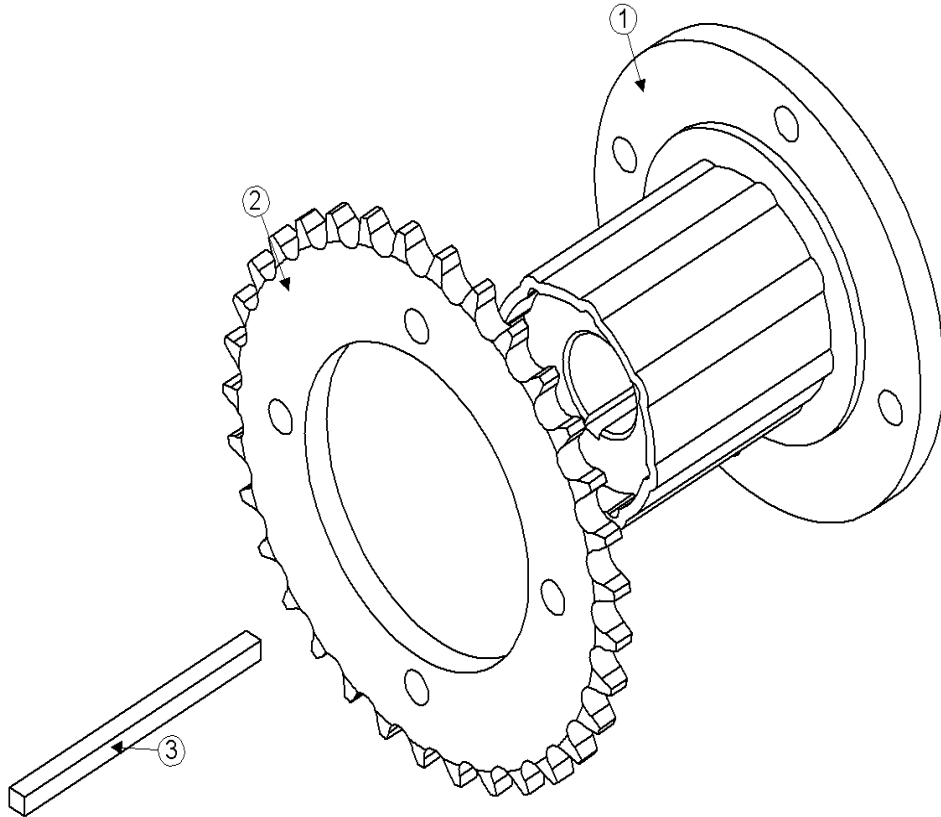
DRIVE COMPONENT DETAIL



Model 2810 Hillco Leveling System
For Serial Numbers 2810-1004 thru 2810-1011

TRANSITION COMPONENTS				
REF.	PART NO.	QTY.	PART NAME	DESCRIPTION
1	LA-251512	1	TA ASM	
2	LA-251622	1	TT ASM	
3	LA-255141	1	TM MOUNT ASM, ROD	
4	HC-100706	1	CYLINDER, SLAVE	<i>SEE HYDRAULICS PAGE 7-1</i>
5	LA-229071	2	TM PIN ASM, TRIM CYLINDER	
6	LTP-241721	1	BUSHING, PIVOT	
7	LM-226841	1	TM COLLAR, PIVOT	
8	LM-250641	2	TM ARM, HEADER LOCK	
9	LA-253621	1	TM ASM, HYDRAULIC COUPLER	
10	LM-251791	2	TM SPACER, EYEBOLT	
11	LP-249871	2	TM UHMW, BACKING	
12	LM-255181	1	TM PLATE, WEAR BOTTOM	
13	LM-255191	1	TM PLATE, WEAR LH	
14	LM-255201	1	TM PLATE, WEAR RH	
15	LM-255121	2	TM PLATE, BACKING	
BEATER SHAFT				
16	LA-251631	1	TB ASM, SHAFT	MUST BE USED WITH METAL PADDLES
17	LM-251001	2	TB PADDLE, METAL	NOT SUITABLE FOR CORN
18	LM-212701	1	TM KEY, BEATER DRIVE	
19	MC-100548	1	INSERT, BEARING, 1-7/16	
20	LA-243691	2	TM ASM, INNER FLANGETTE	
21	MC-101339	1	FLANGETTES, RND BEARING (PAIR)	
22	MC-136151	1	SPROCKET, 80P, 14T TAPER BORE	
23	MC-135511	1	HUB, SPLIT TAPER 1-7/16	
NS	LP-213242	1	TM CHAIN, 30 PIN #80	
NS	MC-139341	1	LINK, CONNECTING, #80	
NS	MC-139351	1	LINK, OFFSET, #80	
TRANSITION THROAT JACK SHAFT				
24	LA-251321	1	TM ASM, JS MOUNTING	
25	LM-251771	1	TT SHAFT, JACK	
26	MC-100548	2	INSERT, BEARING, 1-7/16	
27	MC-101339	2	FLANGETTES, RND BEARING (PAIR)	
28	MC-135491	1	SPROCKET, 80P, 11T TAPER BORE	
29	MC-135511	1	HUB, SPLIT TAPER 1-7/16	
30	LM-212701	1	TM KEY, JACK SHAFT	
31	MC-100237	1	SPROCKET, IDLER, 60P, 15T, 5/8B	
32	LM-251881	1	TM SPACER, 60P IDLER SPROCKET	
33	LA-259821	1	RADIAL PIN SLIP CLUTCH	<i>SEE PAGE 2-5 FOR DETAIL</i>
34	LM-226532	1	TM SPROCKET, RADIAL SLIP CLUTCH	
35	LM-244471	1	TM KEY, RADIAL SLIP CLUTCH	
36	LM-255211	1	TM SPROCKET, POWER LOCK, 18T, 60P	
37	MC-101838	1	HUB, POWER LOCK, 1-3/8B	
NS	LP-251781	1	TM CHAIN, 66 PIN #60	
NS	MC-139361	1	LINK, CONNECTING, #60	
NS	MC-139371	1	LINK, OFFSET, #60	
FEEDER HOUSE BEATER DRIVE				
38	LA-255161	1	TM BRKT ASM, LOWER SHIELD	
39	LA-255171	1	TM BRKT ASM, UPPER SHIELD	
40	LM-253861	1	TM SHIELD, MAIN DRIVE	
41	LM-253851	1	TM SHIELD, INNER DRIVE	

Model 2810 Hillco Leveling System
For Serial Numbers 2810-1004 thru 2810-1011
RADIAL PIN SLIP CLUTCH

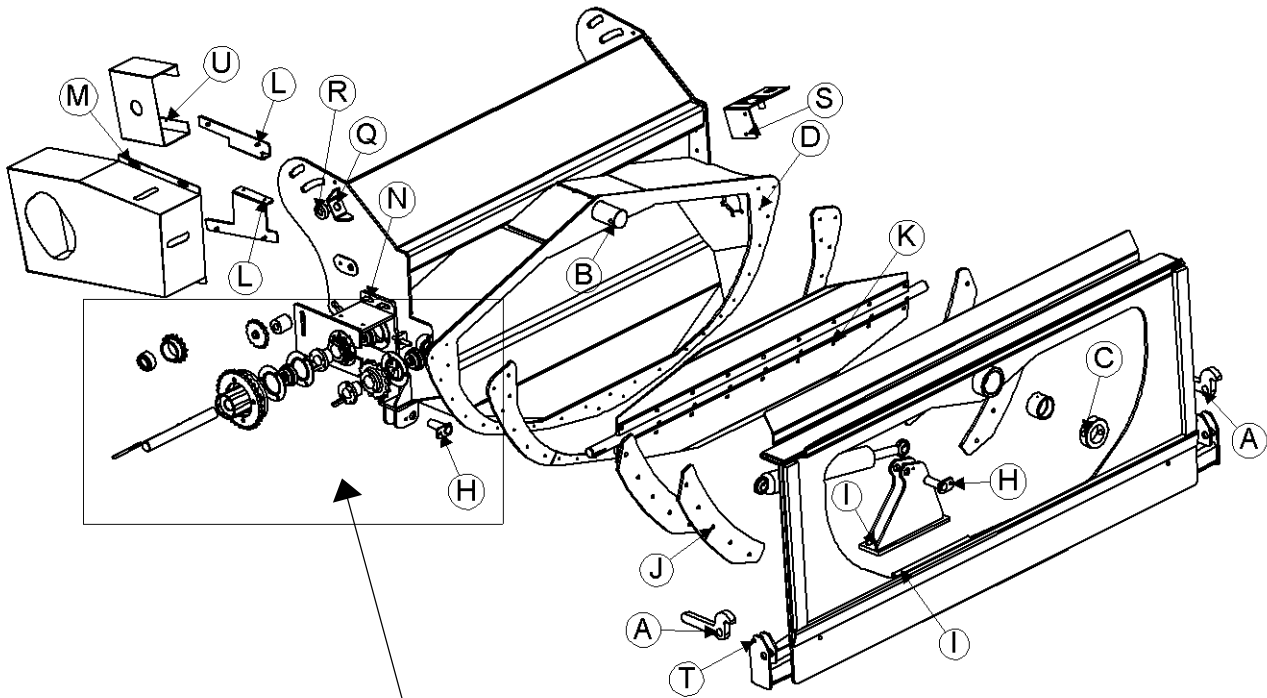


Model 2810 Hillco Leveling System
For Serial Numbers 2810-1004 thru 2810-1011

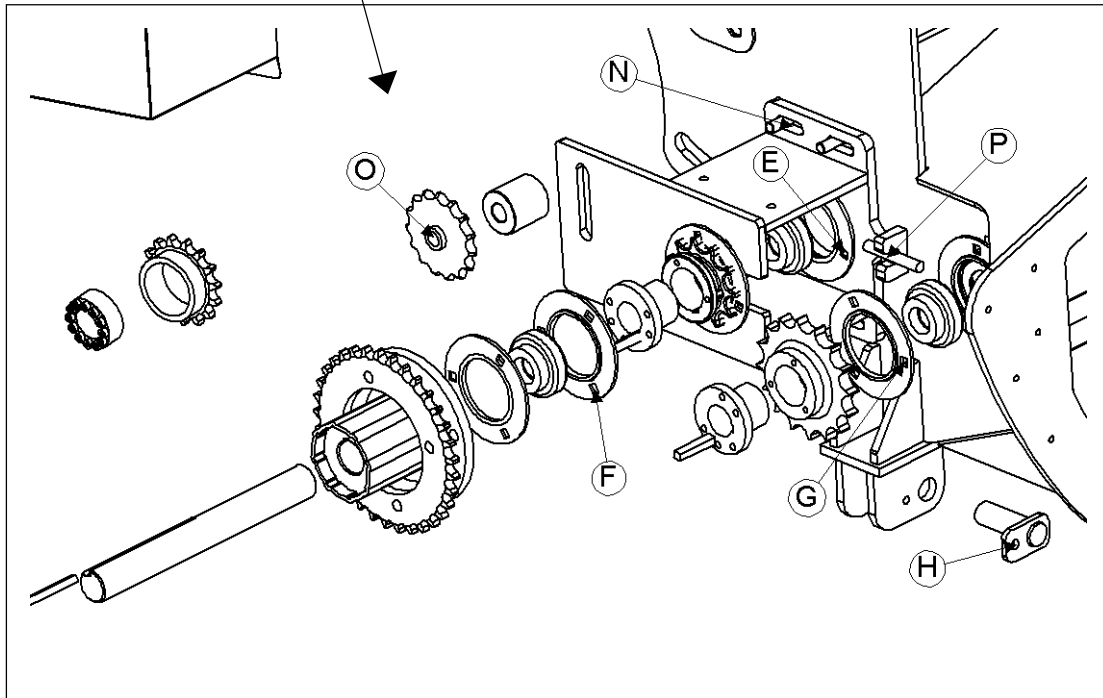
RADIAL PIN SLIP CLUTCH				
REF.	PART NO.	QTY.	PART NAME	DESCRIPTION
1	LA-259821	1	RADIAL PIN SLIP CLUTCH	
2	LM-226532	1	TM SPROCKET, RADIAL SLIP CLUTCH	
3	LM-244471	1	TM KEY, RADIAL SLIP CLUTCH	
RADIAL PIN SLIP CLUTCH FASTENERS				
REF.	PART NO.	QTY.	PART NAME	WHERE USED
NS	F-HC8-08F20	4	HC8 1/2-20 X 1-1/4	
NS	F-LWH-08	4	LW 1/2 HD	
NS	F-SSS-06C08	2	SCREW, SOCKET SET 3/8-16 X 1/2	

Model 2810 Hillco Leveling System
For Serial Numbers 2810-1004 thru 2810-1011

TRANSITION FASTENERS



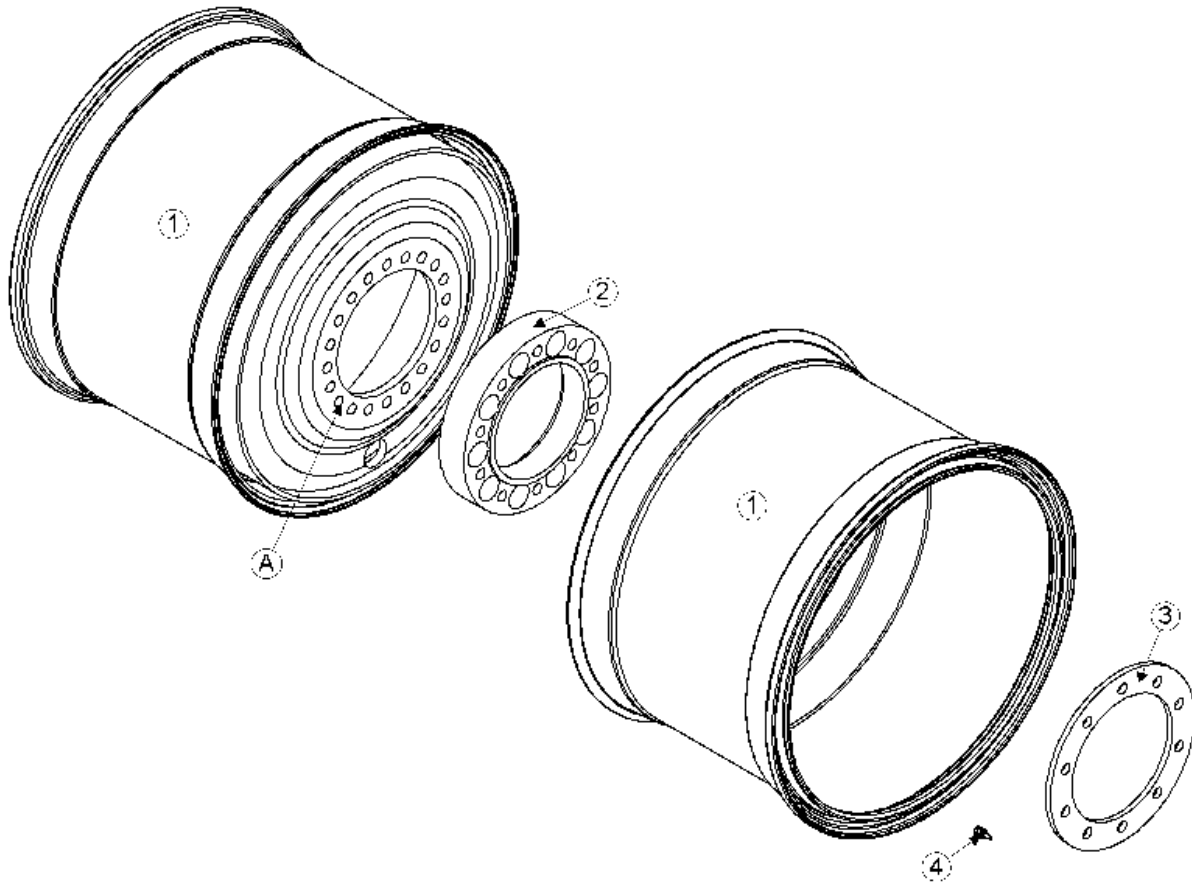
DRIVE COMPONENT FASTENERS DETAIL



Model 2810 Hillco Leveling System
For Serial Numbers 2810-1004 thru 2810-1011

TRANSITION FASTENERS				
REF.	PART NO.	QTY.	PART NAME	WHERE USED
A	F-PCL-16X32	2	PIN, CLEVIS, 1 X 2 PLT	HEADER LOCK ARM
A	F-PCT-03X32	2	PIN, COTTER, 3/16 X 2	HEADER LOCK ARM
B	F-MB-14NR40	3	BUSHING, MACH 14 GA, NR, 2-1/2 ID	TT PIVOT PIN
C	F-HC-16M120E	1	HC-10.9 M16 X 2.00 X 120 PLT	TT PIVOT PIN COLLAR
C	F-HNS-16ME	1	HN-10.9 M16 X 2.00 STOVER PLT	TT PIVOT PIN COLLAR
D	F-FHS-8M016E	29	FHSC-10.9 M8 X 1.25 X 16	TT FACE PLATE
E	F-HCF-10M016F	3	FLHC-8.8 M10 X 1.50 X 16 PLT	INNER JACKSHAFT BEARING
F	F-CB-10M030F	3	CARR-8.8 M10 X 1.50 X 30 PLT	OUTER JACKSHAFT BEARING
F	F-HNF-10MF	3	FLHN-8.8 M10 X 1.50 PLT	OUTER JACKSHAFT BEARING
G	F-CB-10M030F	6	CARR-8.8 M10 X 1.50 X 30 PLT	TT BEATER BRNG
G	F-HNF-10MF	6	FLHN-8.8 M10 X 1.50 PLT	TT BEATER BRNG
H	F-HCF-10M020E	2	FLHC-10.9 M10 X 1.50 X 20 PLT	SLAVE CYLINDER MOUNT PIN
I	F-HC-16M050E	3	HC-10.9 M16 X 2.00 X 50 PLT	ROD MNT
I	F-HNS-16ME	3	HN-10.9 M16 X 2.00 STOVER PLT	ROD MNT
J	F-HCF-12M040E	10	FLHC-10.9 M12 X 1.75 X 40 PLT	BACKING PLATES
K	F-HNF-12ME	18	FLHN-10.9 M12 X 1.75 PLT	STEEL PADDLES
K	F-HCF-12M030E	18	FLHC-10.9 M12 X 1.75 X 30 PLT	STEEL PADDLES
L	F-HC-8M025F	4	HC-8.8 M8 X 1.25 X 25	MAIN BTR DRIVE SHIELD BRKTS
L	F-HNF-8MF	4	FLHN-8.8 M8 X 1.25 PLT	MAIN BTR DRIVE SHIELD BRKTS
M	F-HNF-08MF	4	FLHN-8.8 M8 X 1.25 PLT	MAIN BTR DRIVE SHIELD
N	F-HNF-12ME	4	FLHN-10.9 M12 X 1.75 PLT	TT 80P CHAIN ADJUSTER
O	F-HC-16M110E	1	HC-10.9 M16 X 2.0 X 110 PLT	60P IDLER SPROCKET
O	F-HNS-16ME	1	HN-10.9 M16 X 2.0 STOVER PLT	60P IDLER SPROCKET
O	F-FWH-10	5	FW 5/8 HD	60P IDLER SPROCKET
P	F-FWH-08	2	FW 1/2 HD YELLOW PLT	TT 80P CHAIN ADJUSTER
P	F-HNJ-12MF	2	HN-8.8 M12 X 1.75 JAM PLT	TT 80P CHAIN ADJUSTER
Q	F-EYB-20M150E	2	EYEBOLT M20 X 2.50 X 150	ANGLE ADJUSTMENT
Q	F-HNF-20ME	4	FLHN-10.9 M20 X 2.50 PLT	ANGLE ADJUSTMENT
R	F-CB-12C56	2	CARR-GR. 5 3/4-10 X 3-1/2 PLT	ANGLE ADJUSTMENT
R	F-HNF-12C	2	FLHN-GR. 5 3/4-10 PLT	ANGLE ADJUSTMENT
S	F-HCF-10M025E	2	FLHC-10.9 M10 X 1.50 X 25 PLT	HDR HYDRAULIC COUPLER MNT
S	F-HNF-10ME	2	FLHN-10.9 M10 X 1.50 PLT	HDR HYDRAULIC COUPLER MNT
T	F-PQR-08X32	2	PIN, QUICK RELEASE	HEADER LOCK ARM
U	F-HC-8M025F	2	HC-8.8 M8 X 1.25 X 25	INNER BTR DRIVE SHIELD
U	F-HNF-8MF	2	FLHN-8.8 M8 X 1.25 PLT	INNER BTR DRIVE SHIELD

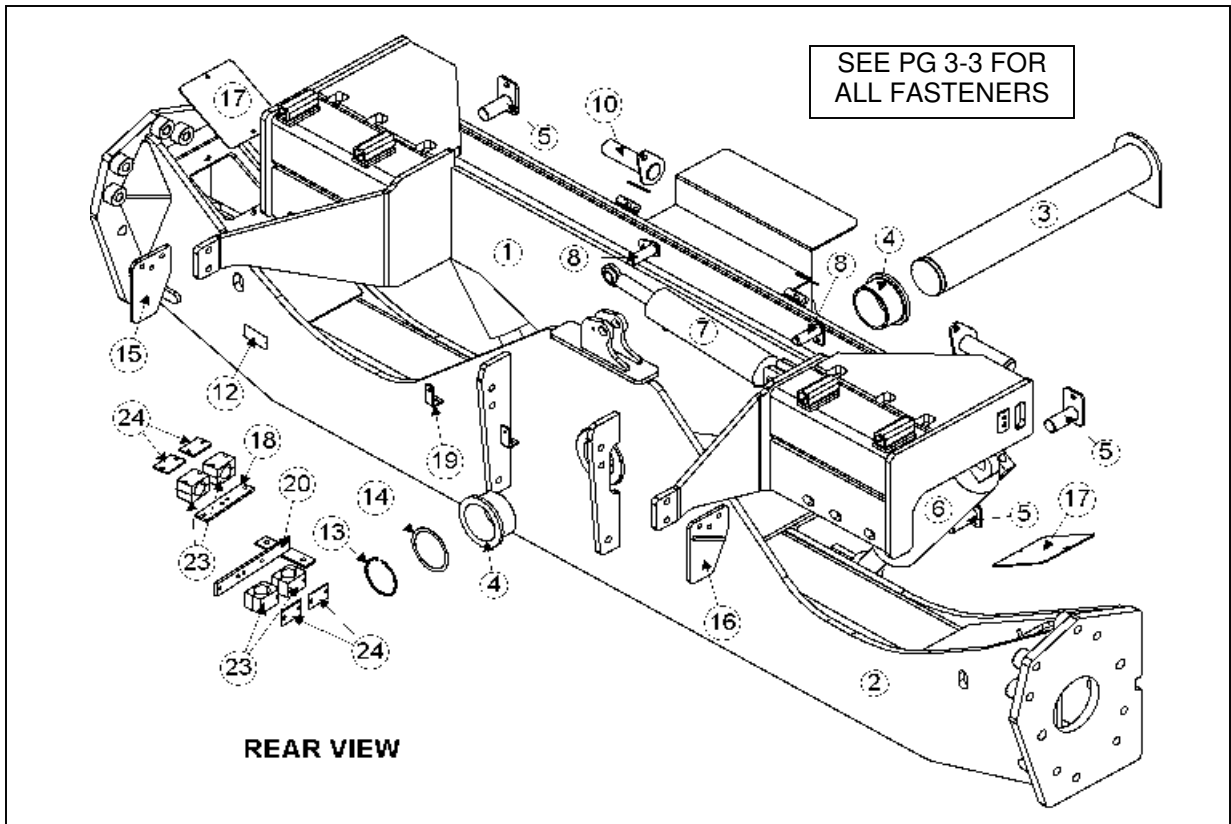
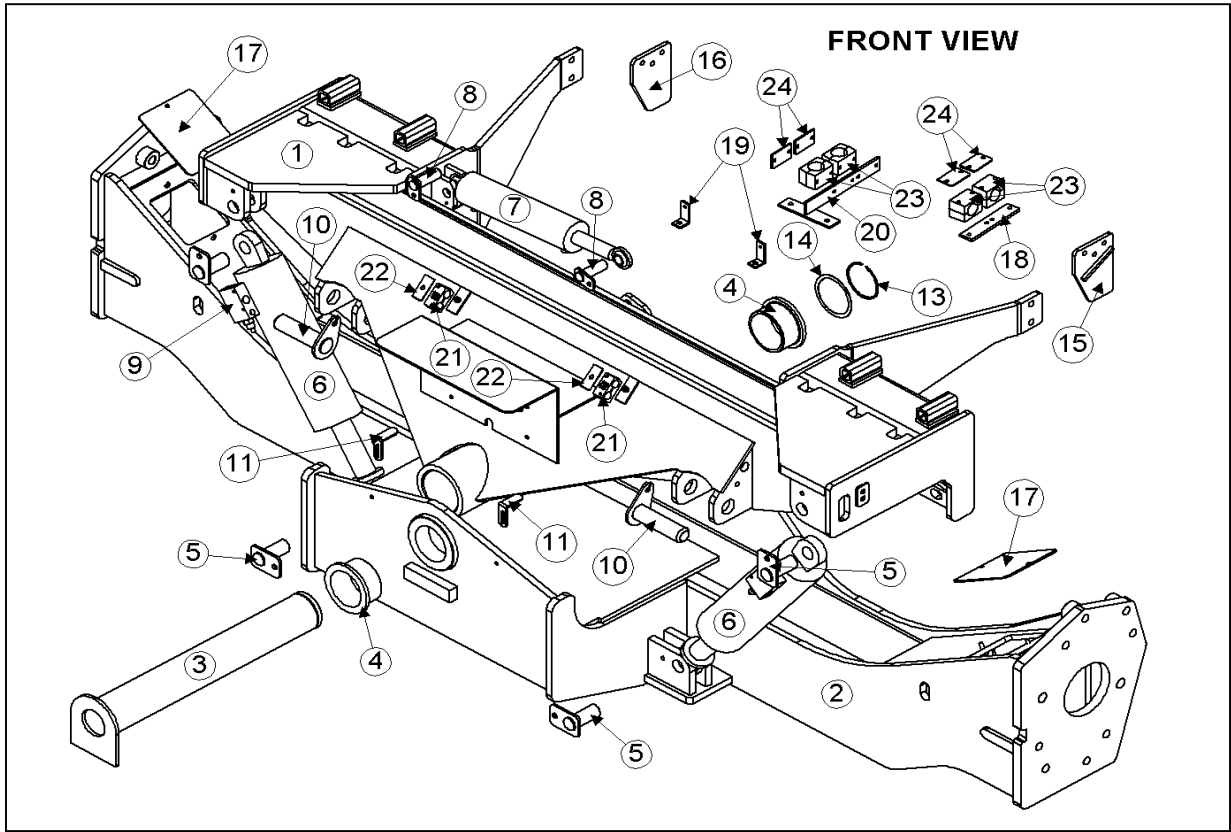
Model 2810 Hillco Leveling System
For Serial Numbers 2810-1004 thru 2810-1011
WHEEL, WHEEL SPACER & WHEEL WASHER



Model 2810 Hillco Leveling System
For Serial Numbers 2810-1004 thru 2810-1011

WHEEL COMPONENTS				
FOR COMBINES WITH 24.5-32 WHEELS AND TIRES				
REF.	PART NO.	QTY.	PART NAME	DESCRIPTION
1	MC-140211	4	WHEEL ASM, 32 X 21.00 COMPLETE	
2	LP-252211	2	LM SPACER, DUAL WHEEL	
3	LM-252231	2	LM WASHER, DUAL WHEEL	
4	MC-141941	4	VALVE STEM	
NS	MC-140231	4	TIRE, RADIAL, AT, DT, TLR1W	
WHEEL FASTENERS				
FOR COMBINES WITH 24.5-32 WHEELS AND TIRES				
REF.	PART NO.	QTY.	PART NAME	WHERE USED
A	F-HC-22M150E	20	HC-10.9 M22 X 1.5 X 150 PLT	HD WHEELS WITH SPACER
A	CNH PART NUMBER: 336945	20	NUTS	

3 CARRIAGE

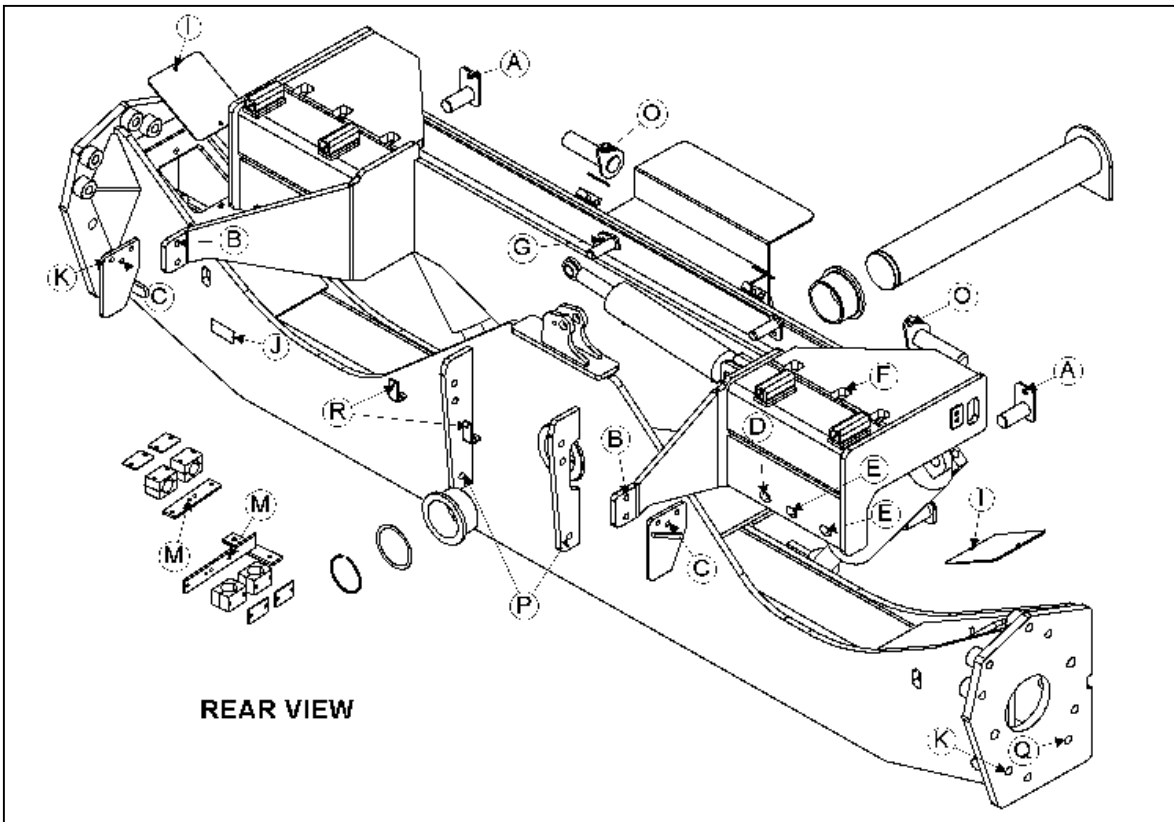
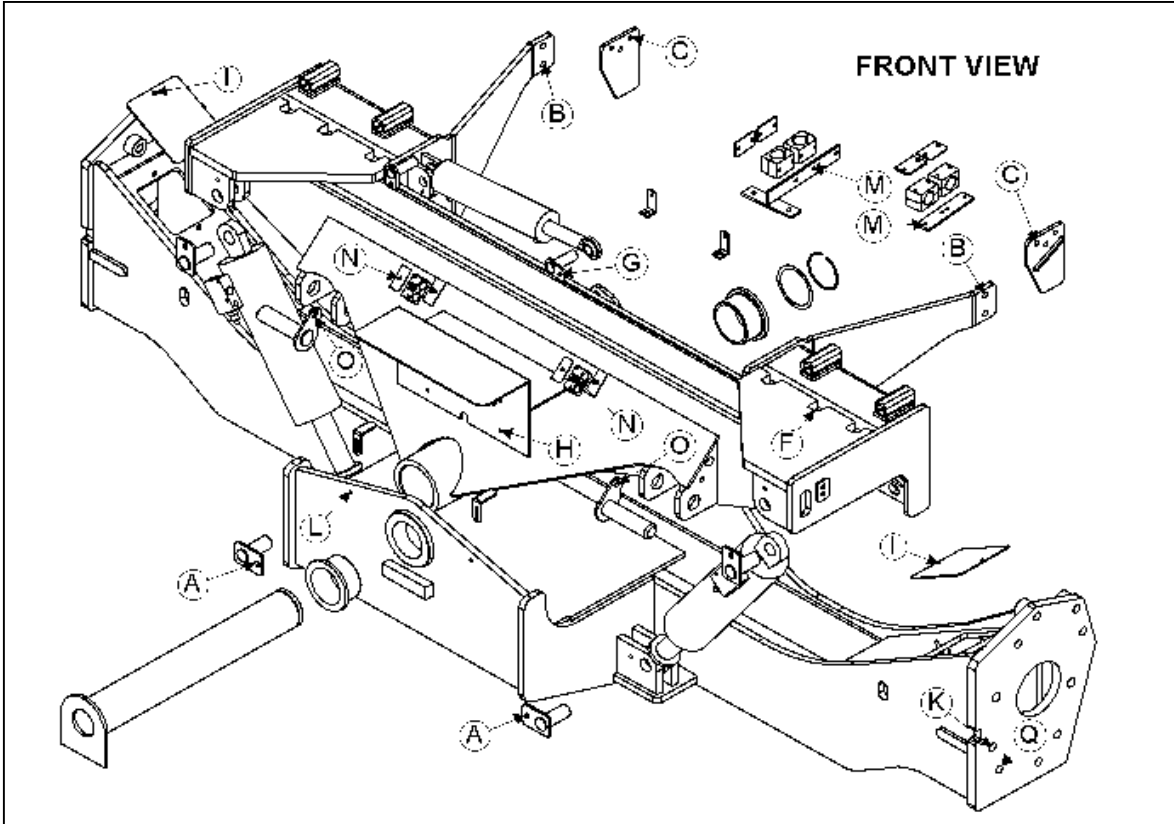


Model 2810 Hillco Leveling System
For Serial Numbers 2810-1004 thru 2810-1011

CARRIAGE COMPONENTS				
REF.	PART NO.	QTY.	PART NAME	DESCRIPTION
1	LA-251491	1	CO ASM	
2	LA-251531	1	CU ASM	
3	LA-247481	1	CM ASM, MAIN PVT PIN	
4	LP-251071	2	CO BUSHING, PIVOT	
5	LA-230551	4	CM PIN ASM, MAIN CYLINDER	
6	HC-102218	2	CYLINDER, MAIN	SEE HYDRAULICS PAGE 7-1
7	HC-101842	1	CYLINDER, MASTER	SEE HYDRAULICS PAGE 7-1
8	LA-229071	2	TM PIN ASM, TRIM CYLINDER	
9	HC-139151	2	VALVE, 3-PORT COUNTERBALANCE	SEE HYDRAULICS PAGE 7-1
10	LM-255301	2	CM PIN, HEADER LIFT CYLINDER	
11	LP-251551	2	EM PLATE, LIMIT STOP	
12	LA-255951	1	PLATE, SERIAL NUMBER	
13	MC-138651	1	SNAP RING 4"	
14	MC-138641	2	WASHER 4.016ID X 4.764OD X .048	
15	LA-251471	1	CM ASM, LEFT SWING ARM MOUNT	
16	LA-251481	1	CM ASM, RIGHT SWING ARM MOUNT	
17	LP-251461	2	CM PLATE, FINAL BOLT COVER	
NS	MC-137501	?	WASHER, QUICK REPAIR 2"	OPTIONAL -- SAFETY STOP
NS	MC-137251	?	COLLAR, 2-PIECE WITH CLAMPING 2" B	OPTIONAL -- SAFETY STOP -- QTY. AS NEEDED
MISCELLANEOUS CARRIAGE COMPONENTS				
REF.	PART NO.	QTY.	PART NAME	DESCRIPTION
18	LM-251861	1	HM FLAT, HYDRO HOSE BRACKET	
19	LM-251871	2	HM MOUNT, BRAKE LINE	
20	LA-251831	1	HM ASM, HYDRO HOSE BRACKET	
21	HC-140461	2	BEHRINGER TWIN CLAMP .875 DIAMETER	ON OC HOSES BETWEEN CYLINDERS
22	HC-139451	2	BEHRINGER TWIN COVER PLATE (FOR .875)	ON OC HOSES BETWEEN CYLINDERS
22	HC-140641	4	BEHRINGER STD. CLAMP 2" DIAMETER	HYDRO HOSES
23	HC-140651	4	BEHRINGER STD. COVER PLATE	HYDRO HOSES

Model 2810 Hillco Leveling System
For Serial Numbers 2810-1004 thru 2810-1011

CARRIAGE FASTENERS

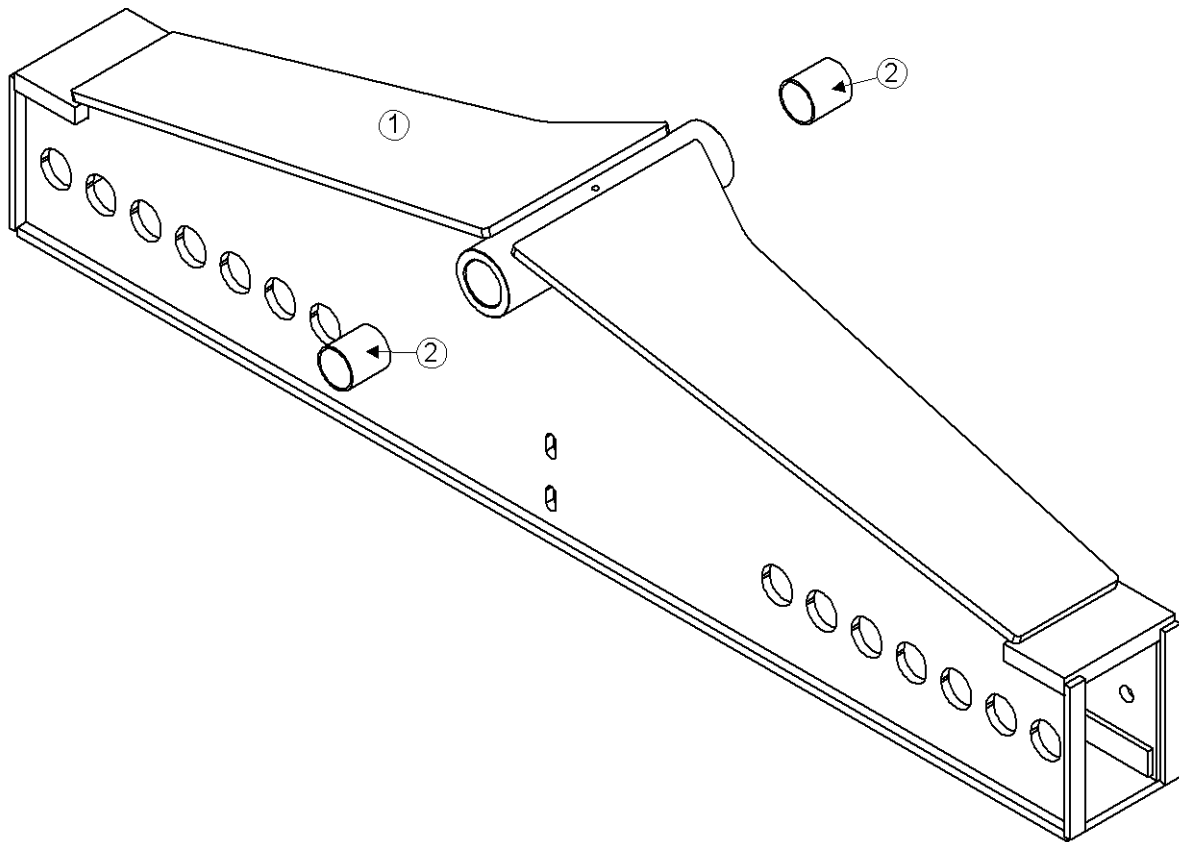


Model 2810 Hillco Leveling System
For Serial Numbers 2810-1004 thru 2810-1011

CARRIAGE FASTENERS				
REF.	PART NO.	QTY.	PART NAME	WHERE USED
A	F-HCF-12M025F	4	FLHC-8.8 M12 X 1.75 X 25 PLT	LEVELING CYL MNT PIN
B	F-HC-16M050E	4	HC-10.9 M16 X 2.00 X 50 PLT	OC SWING ARM PLATE
B	F-HNS-16ME	4	HN-10.9 M16 X 2.00 STOVER PLT	OC SWING ARM PLATE
C	F-HCF-12M030E	6	FLHC-10.9 M12 X 1.75 X 30 PLT	SWING ARM MOUNTING BRACKET
C	F-HNF-12MF	6	FLHN-8.8 M12 X 1.75 PLT	SWING ARM MOUNTING BRACKET
D	F-HC-20M070E	2	HC-10.9 M20 X 2.5 X 70 PLT	OC REAR MOUNTING PLATE
E	F-HC-20M120	4	HC-10.9 M20 X 2.5 X 120 PLT	OC REAR MOUNTING PLATE
F	F-HC-20M280E	6	HC-10.9 M20 X 2.5 X 280 PLT	OC BOTTOM MOUNTING PLATE
G	F-HCF-10M020E	2	FLHC-10.9 M10 X 1.50 X 20 PLT	MASTER CYL MNT PIN
H	F-HCF-08M020E	4	FLHC-10.9 M8 X 1.25 X 20 PLT	ELECTRICAL ASM TO OC
H	F-HNF-08ME	4	FLHN-10.9 M8 X 1.25 PLT	ELECTRICAL ASM TO OC
I	F-HNF-8MF	4	FLHN-10.9 M8 X 1.25 PLT	UC FINAL BOLT COVER PLATES
J	F-UDS-#7X06	2	SCREW, U-DRIVE #7 X 3/8	SERIAL NUMBER PLATE
K	F-SHC-20M060E	4	SHCS-10.9 M20 X 2.50 X 60 PLT	FINAL DRIVES
L	F-HC-8M040F	2	HC-8.8 M8 X 1.25 X 40	LIMIT SWITCH STOPS
L	F-HNF-08MF	2	FLHN-8.8 M8 X 1.25 PLT	LIMIT SWITCH STOPS
M	F-HC-6M090F	8	HC-8.8 M6 X 1.0 X 90 PLT	HYDRO HOSE CLAMPS
M	F-HNF-6MF	8	FLHN-8.8 M6 X 1.0 PLT	HYDRO HOSE CLAMPS
N	HC-139461	2	HC5 5/16-18 X 1-3/4	ON OC HOSES BETWEEN CYLINDERS
O	F-HC-12M040E	2	HC-10.9 M12 X 1.75 X 40	HEADER LIFT CYLINDER PINS
O	F-HNS-12ME	2	HN-10.9 M12 X 1.75 STOVER	HEADER LIFT CYLINDER PINS
P	F-HC-16M050E	6	HC-10.9 M16 X 2.00 X 50 PLT	TRANSMISSION MOUNTING
Q	F-SHC-20M090E	2	SHCS-10.9 M20 X 2.50 X 90	FINAL DRIVES
R	EC-142101	2	CLAMP, HOSE, RC 38	BRAKE HOSES
R	F-HC-06M020F	2	HC- 8.8 M6 X 1.0 X 20	BRAKE HOSES
R	F-HNF-6MF	2	FLHN- 8.8 M6 X 1.0	BRAKE HOSES

Model 2810 Hillco Leveling System
For Serial Numbers 2810-1004 thru 2810-1011

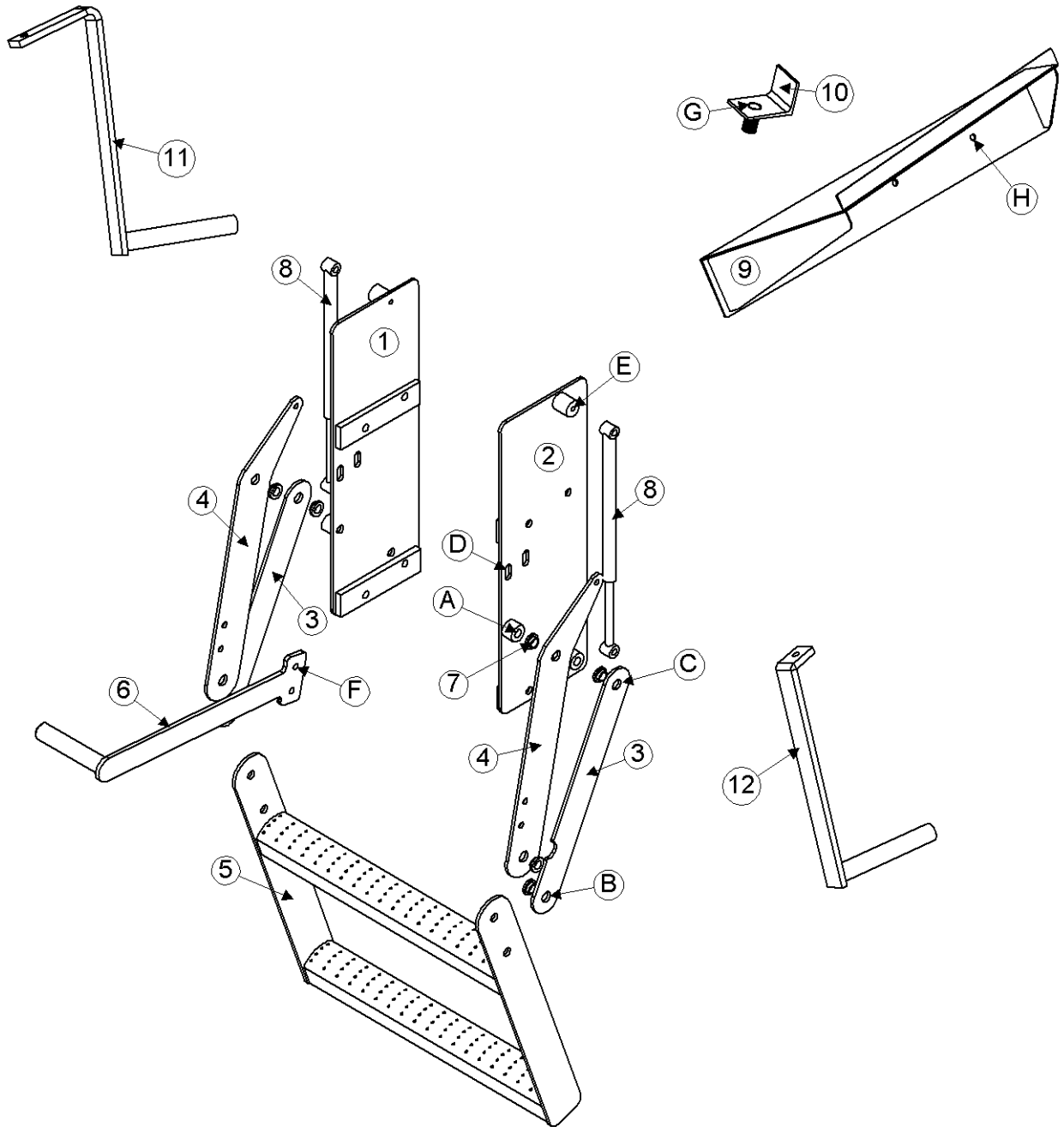
4 DROP AXLE



Model 2810 Hillco Leveling System
For Serial Numbers 2810-1004 thru 2810-1011

DROP AXLE COMPONENTS				
REF.	PART NO.	QTY.	PART NAME	DESCRIPTION
1	LA-252161	1	DA ASM	
2	MC-140791	2	REAR AXLE PIVOT SLEEVE	DROP AXLE PIVOT BUSHING
DROP AXLE FASTENERS				
**ALL FASTENERS USED ON THE DROP AXLE ARE ORIGINAL EQUIPMENT				

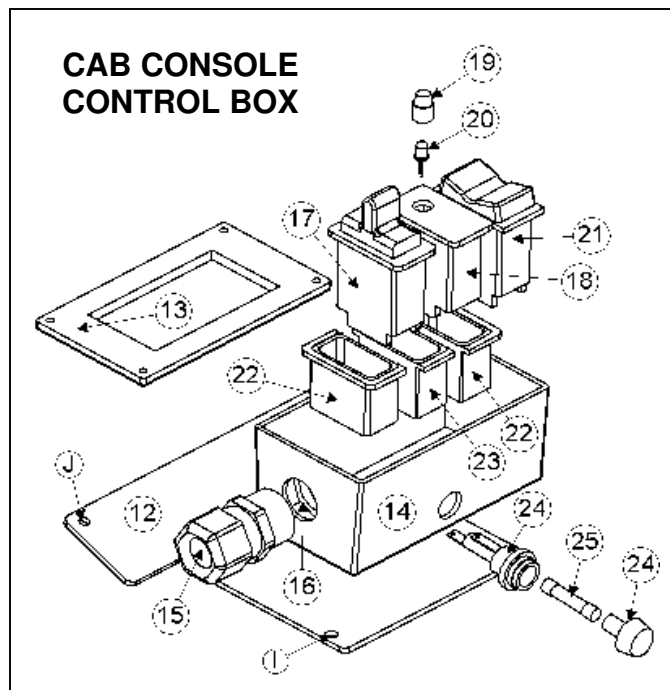
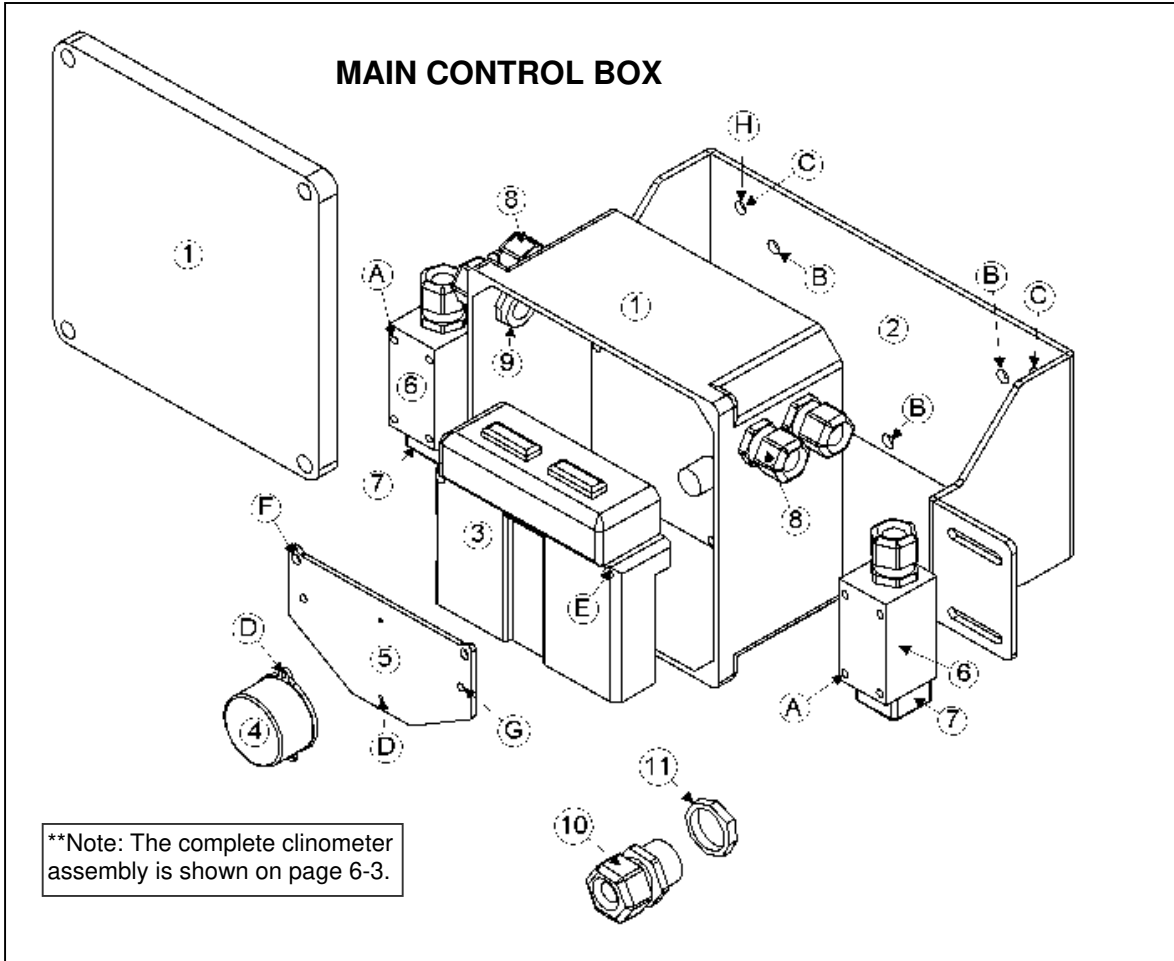
5 LADDER



Model 2810 Hillco Leveling System
For Serial Numbers 2810-1004 thru 2810-1011

LADDER COMPONENTS				
REF.	PART NO.	QTY.	PART NAME	DESCRIPTION
1	LA-252332	1	LM ASM, LEFT LADDER MNT	
2	LA-252342	1	LM ASM, RIGHT LADDER MNT	
3	LM-252262	2	LM PLATE, FOLDING LADDER LINK	
4	LM-252272	2	LM PLATE, UPPER ARM	
5	LA-252322	1	LM STEP ASM, FOLDING LADDER	
6	LA-248861	1	LM ASM, LADDER HANDLE	
7	MC-134941	8	FLANGED BUSHING	
8	MC-139251	2	GAS CHARGED LIFT SUPPORT	
NS	MC-134931	2	LIFT SUPPORT BRACKETS (PAIR)	
9	LA-253901	1	LM ASM, LADDER WEDGE	
10	LA-253961	1	LM ASM, LADDER STOP	
11	LA-251801	1	LM ASM, RH SIDE STEP SUPPORT	
12	LA-255841	1	LM ASM, LH SIDE STEP SUPPORT	
LADDER FASTENERS				
REF.	PART NO.	QTY.	PART NAME	WHERE USED
A	F-HC-12M050F	2	HC-8.8 M12 X 1.75 X 50 PLT	LADDER TOP SIDE PLATE PIVOTS
A	F-HNS-12ME	2	HN-10.9 M12 X 1.75 STOVER PLT	LADDER PIVOTS
B	F-HC-12M030F	4	HC-8.8 M12 X 1.75 X 30 PLT	LADDER MIDDLE PIVOTS
B	F-HNS-12ME	4	HN-10.9 M12 X 1.75 STOVER PLT	LADDER PIVOTS
C	F-HC-12M060F	2	HC-8.8 M12 X 1.75 X 60 PLT	LADDER BOTTOM SIDE PLT PIVOTS
C	F-HNS-12ME	2	HN-10.9 M12 X 1.75 STOVER PLT	LADDER PIVOTS
D	F-HC-10M035F	4	HC-8.8 M10 X 1.50 X 40	LADDER SIDE PLATE MOUNTS
D	F-HNS-10ME	4	HN-10.9 M10 X 1.50 STOVER PLT	LADDER SIDE PLATE MOUNTS
E	F-HNJ-05C	2	HN5 5/16-18 JAM NUT PLT	LADDER BALL STUD
E	F-LW-05	4	LW 5/16	LADDER BALL STUD
F	F-HC-08M025F	2	HC-8.8 M8 X 1.25 X 25 PLT	LADDER HANDLE
F	F-HNF-08MF	2	FLHN-8.8 M8 X 1.25 PLT	LADDER HANDLE
G	F-HN5-12C	1	HN5 3/4-10	LADDER STOP
G	F-LW-12	1	LW 3/4	LADDER STOP
H	F-HCF-8M020E	3	FLHC-10.9 M8 X 1.25 X 20 PLT	LADDER WEDGE
H	F-HNF-08MF	3	FLHN-8.8 M8 X 1.25 PLT	LADDER WEDGE

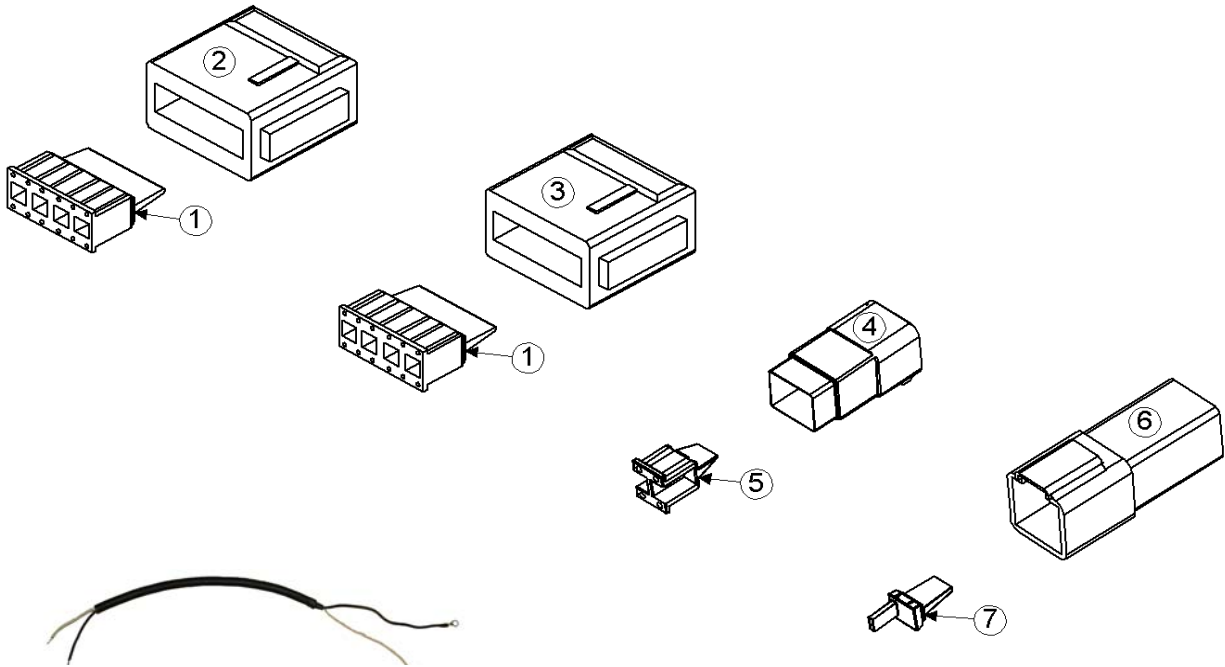
6 ELECTRICAL



Model 2810 Hillco Leveling System
For Serial Numbers 2810-1004 thru 2810-1011

MAIN ELECTRICAL BOX COMPONENTS				
REF.	PART NO.	QTY.	PART NAME	DESCRIPTION
ASM	LA-254472	1	EM ASM, CONTROLLER	
1	LM-255341	1	EM BOX, CONTROLLER MOUNT	
2	LP-251432	1	EM MOUNT, LEVELING BOX	
3	EC-141831	1	CONTROLLER	
4	LA-255821	1	EM ASM, CLINOMETER	<i>*SEE NOTE BELOW DIAGRAM</i>
5	LM-255331	1	EM SHT, CLINOMETER MOUNT	
6	EC-100557	2	BODY, LIMIT SWITCH	
7	EC-100692	2	HEAD, LIMIT SWITCH STR PLUNGER	
8	EC-138781	6	STRAIN RELIEF, NYLON, BLK, 1/2 NPT	
9	EC-142121	4	STRAIN RELIEF NUT, 1/2" NYLON, BLK	
10	EC-141891	1	STRAIN RELIEF, NYLON, BLK	BOTTOM OF CAB
11	EC-141901	1	STRAIN RELIEF NUT, NYLON, BLK	BOTTOM OF CAB
ELECTRICAL BOX FASTENERS				
A	F-PHM-5M050F	8	PHMS M5 X 0.8 X 50 PLT	LIMIT SWITCH MNT
A	F-HNF-5MF	8	FLHN-8.8 M5 X 0.8 PLT	LIMIT SWITCH MNT
B	F-HC5-04C12	3	HC5 1/4-20 X 3/4	PVC BOX TO BRACKET
B	F-LW-04	3	LW 1/4	PVC BOX TO BRACKET
C	F-HCF-08M020E	4	FLHC-10.9 M8 X 1.25 X 20 PLT	ELECTRICAL PLATE TO OC
C	F-HNF-08ME	4	FLHN-10.9 M8 X 1.25 PLT	ELECTRICAL PLATE TO OC
D	F-PHM-#6C06	2	PHMS #6-32 X 3/8	CLINOMETER MOUNT
E	F-PHM-04C24	2	PHMS 1/4-20 X 1-1/2	CONTROLLER TO PVC BOX
E	F-HNF-04C	2	FLHN 1/4-20 SERR.	CONTROLLER TO PVC BOX
F	F-PHM-04C36	2	PHMS 1/4-20 X 2-1/4	GROUNDING PLATE MOUNTING
F	F-HNF-04C	2	FLHN 1/4-20 SERR.	GROUNDING PLATE MOUNTING
G	F-PHM-#10C16	2	PHMS 10-24 X 3/4	GROUNDING PLATE GROUND
G	F-HNF-#10C	2	HN5 10-24, FLNG SERR	GROUNDING PLATE GROUND
G	F-HN-#10C	2	HN5 10-24	GROUNDING PLATE GROUND
H	F-LWE-05	1	LW 5/16, EXTERNAL STAR	EXTERNAL GROUND WIRE
CAB CONSOLE CONTROL BOX COMPONENTS				
REF.	PART NO.	QTY.	PART NAME	DESCRIPTION
ASM	LA-254452	1	EM ASM, CAB CONTROL BOX	
12	LM-251641	1	EM MOUNT, CAB CONSOLE	
13	LM-252611X	1	EM LID, CAB CONTROL BOX	
14	LM-241122X	1	EM, CAB CONTROL BOX	
15	EC-138791	1	STRAIN RELIEF, NYLON, BLK	
16	EC-138801	1	STRAIN RELIEF NUT, NYLON, BLK	
17	LA-259671	1	SWITCH ASM, LEFT-RIGHT	
18	LM-252621	1	EM MOUNT, MAX LEVEL LAMP	
19	EC-140761	1	LENSE, YELLOW	
20	EC-140871	1	LED	
21	LA-259661	1	SWITCH ASM, AUTO-OFF-MANUAL	
22	EC-140751	2	GANG MOUNT	
23	EC-140771	1	BEZEL, CENTER	
24	EC-136211	1	3AG FUSE HOLDER	
25	EC-136221	1	AGC-6A FUSE	
CAB CONSOLE CONTROL BOX FASTENERS				
I	F-PHM-#6C12	2	PHMS 6-32 X 3/4	CONSOLE BOX TO BRACKET
I	F-HNF-#6C	2	FLHN 6-32	CONSOLE BOX TO BRACKET
J	F-PHM-4M030F	2	PHMS M4 X 0.7 X 30	CONSOLE BOX TO BRACKET DASH

Model 2810 Hillco Leveling System
For Serial Numbers 2810-1004 thru 2810-1011
ELECTRICAL CONNECTORS AND CABLES



#8 LA-255631
EM CABLE ASM, LIMIT SWITCH



#9 LA-249102
EM CABLE ASM, BOX TO VALVE



#11 LA-249062
EM CABLE ASM, LEVELING CABLE



#10 LA-255821
EM ASM, CLINOMETER



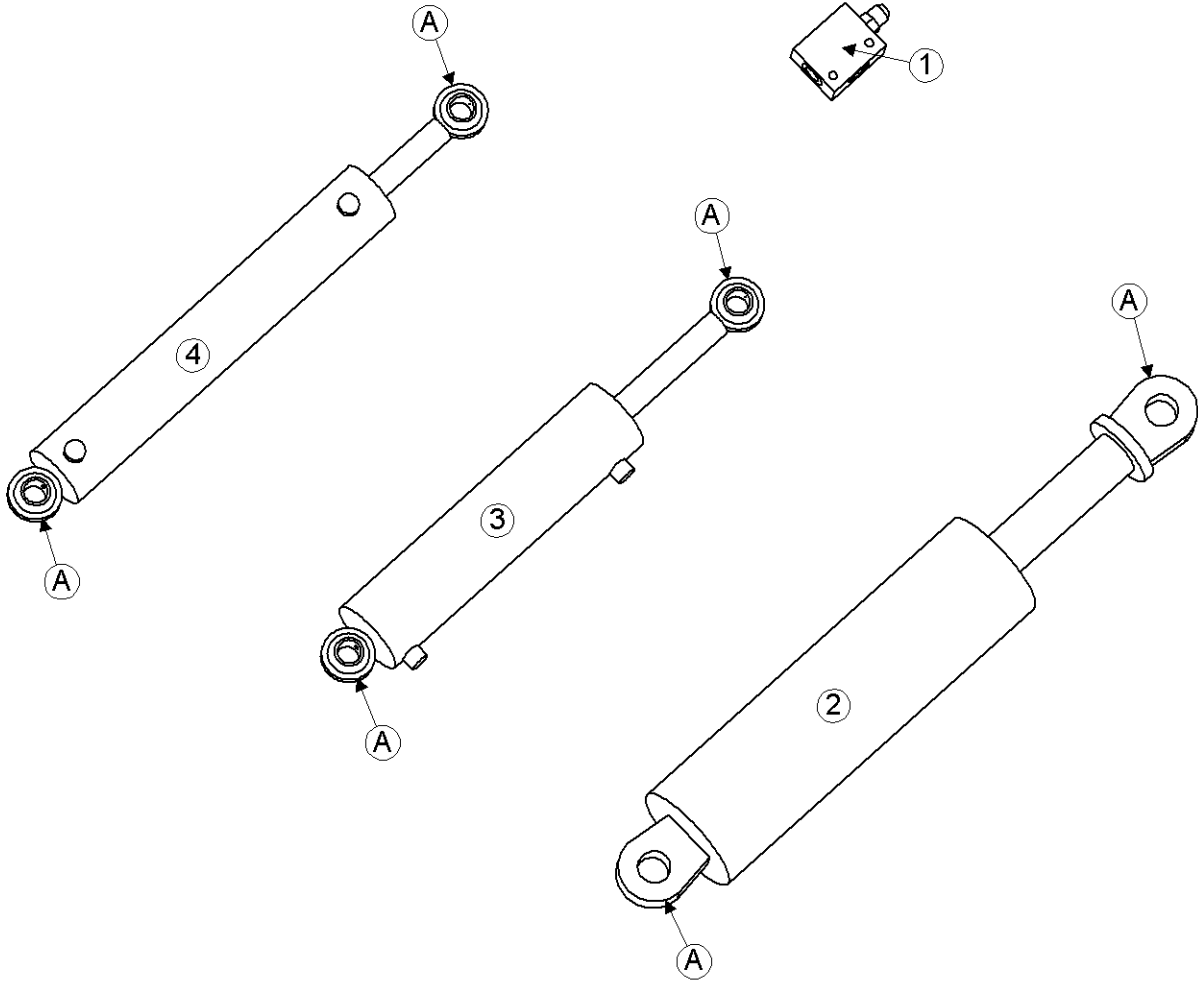
#12 LA-255751
EM CABLE ASM, CAB TO BOX

Model 2810 Hillco Leveling System
For Serial Numbers 2810-1004 thru 2810-1011

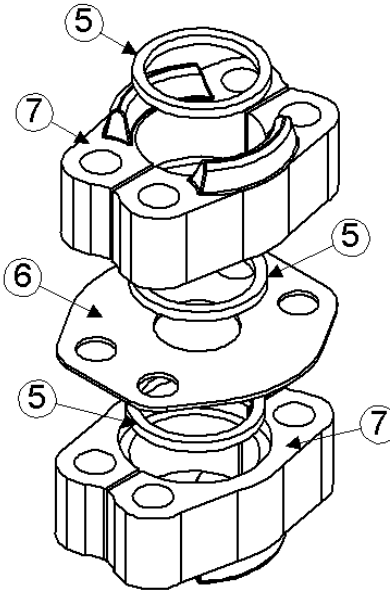
ELECTRICAL CONNECTORS				
REF.	PART NO.	QTY.	PART NAME	DESCRIPTION
1	EC-141741	2	DTM SERIES 12-SOCKET WEDGE	
2	EC-141751	1	DTM SERIES 12-SOCKET PLUG-GRAY	
3	EC-141761	1	DTM SERIES 12-SOCKET PLUG-BLACK	
4	EC-141791	1	DTM SERIES 4-SOCKET PLUG	
5	EC-141801	1	DTM SERIES 4-SOCKET WEDGE	
NS	EC-141771	18	DTM SERIES SOCKET, CONTACT STAMPED	
6	EC-141811	1	DTM SERIES 4-PIN RECEPTACLE	
7	EC-141821	1	DTM SERIES 4-PIN WEDGE	
NS	EC-141781	4	DTM SERIES PIN, CONTACT STAMPED	

CABLE ASSEMBLIES				
8	LA-255631	2	EM CABLE ASM, LIMIT SWITCH	
9	LA-249102	1	EM CABLE ASM, BOX TO VALVE	
10	LA-255821	1	EM ASM, CLINOMETER	
11	LA-249062	1	EM CABLE ASM, LEVELING CABLE	
12	LA-255751	1	EM CABLE ASM, CAB TO BOX	

7 HYDRAULICS



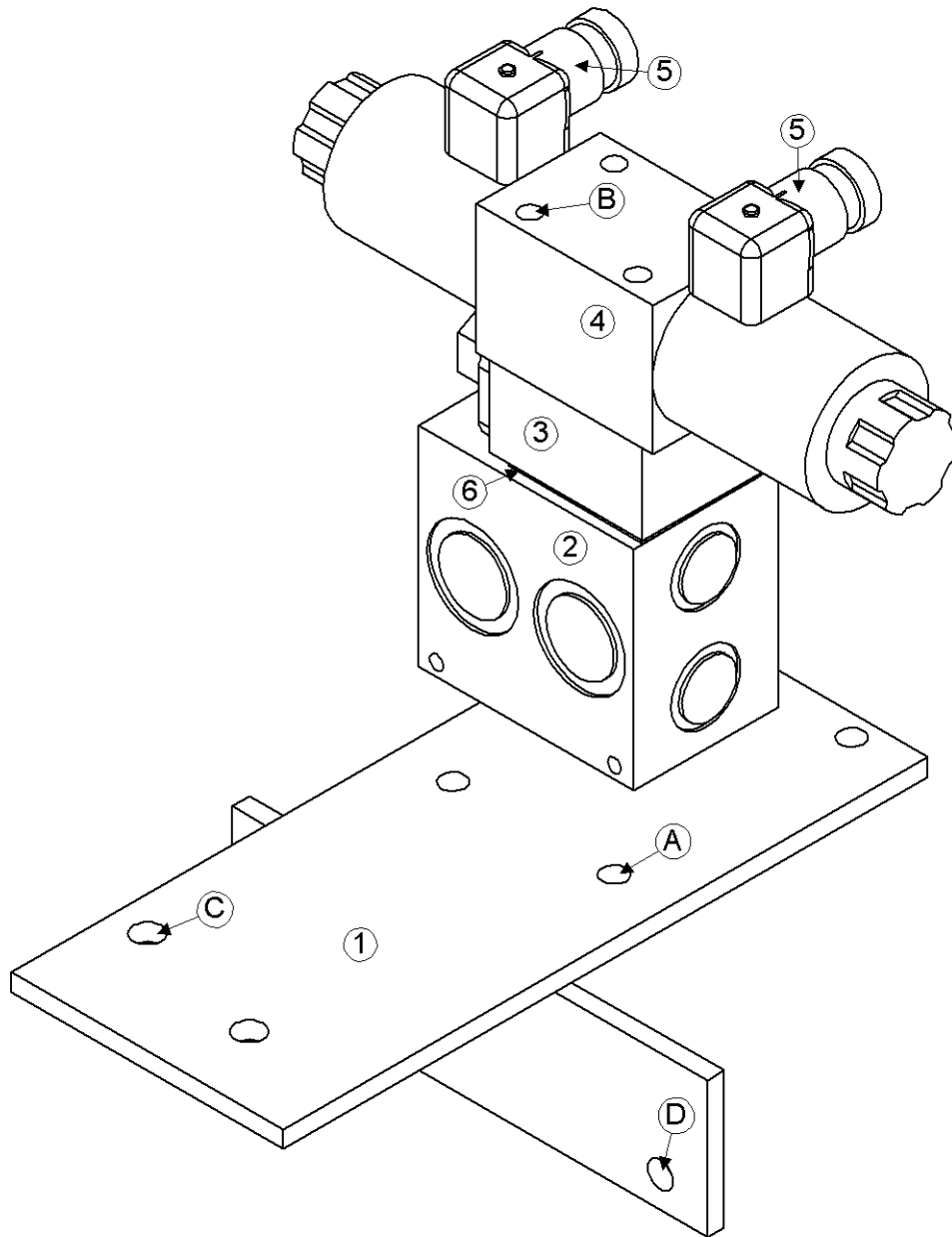
**CODE 62 SPLIT FLANGE
CONNECTOR KIT
ASSEMBLY WITH O-RINGS**



Model 2810 Hillco Leveling System
For Serial Numbers 2810-1004 thru 2810-1011

COUNTERBALANCE VALVE AND CYLINDERS				
REF.	PART NO.	QTY.	PART NAME	DESCRIPTION
1	HC-139151	2	VALVE, 3-PORT COUNTERBALANCE	
..	HC-139181	2	BODY, COUNTERBALANCE VALVE	
..	HC-139161	2	CARTRIDGE, COUNTERBALANCE VALVE	
NS	HC-140361	2	SEAL KIT, COUNTERBALANCE VALVE	
2	HC-102218	2	CYLINDER, MAIN	
NS	HC-135221	2	SEAL KIT, MAIN CYLINDER	
3	HC-101842	1	CYLINDER, MASTER	
NS	HC-134201	1	SEAL KIT, MASTER CYLINDER	
4	HC-100706	1	CYLINDER, SLAVE	
NS	HC-134191	1	SEAL KIT, SLAVE CYLINDER	
CODE 62 SPLIT FLANGE CONNECTOR KIT				
REF.	PART NO.	QTY.	PART NAME	DESCRIPTION
ASM	LA-140421	2	KIT, HOSE COUPLER, 1-1/4" CODE 62	HYDROSTATIC HOSE EXTENSIONS
5	HC-140431	6	O-RING, CODE 62 CONNECTOR (SQUARE) #20	
6	HC-140441	2	PLATE, CODE 62,#20	
7	HC-140451	4	CODE 62, #20 SPLIT FLANGE KIT	
NS	F-HC-12M070E	8	HC-10.9 M12 X 1.75 X 70 PLT	
NS	F-HNS-12ME	8	HN-10.9 M12 X 1.75 STOVER PLT	
HYDRAULIC FASTENERS				
REF.	PART NO.	QTY.	PART NAME	WHERE USED
A	F-SSS-04F04	8	SET SCREW, 1/4-28 X 1/4	ALL CYLINDERS

Model 2810 Hillco Leveling System
For Serial Numbers 2810-1004 thru 2810-1011
HYDRAULIC MANIFOLD



Model 2810 Hillco Leveling System
For Serial Numbers 2810-1004 thru 2810-1011

MANIFOLD COMPONENTS				
REF.	PART NO.	QTY.	PART NAME	DESCRIPTION
1	LA-251611	1	HM PLATE, MANIFOLD MOUNT	
2	HC-138861	1	MANIFOLD, SINGLE STATION	
3	HC-101264	1	SHUTTLE ASM, LOAD SENSE	
..	HC-101021	1	CARTRIDGE, LOAD SENSE VALVE	
..	HC-101022	1	BODY, LOAD SENSE VALVE	
NS	HC-102082	1	SEAL KIT, LOAD SENSE SHUTTLE ASM	
4	HC-140411	1	VALVE, DIRECTIONAL CONTROL, PROPORTIONAL	
NS	LM-250092	1	ORIFICE, .1875, "P" PORT ON DIRECTIONAL CONTROL VALVE	
NS	HC-142731	1	SEAL KIT, DIRECTIONAL CONTROL VALVE	
5	HC-140291	2	PLUG, DIN, LIGHTED	
6	HC-142761	1	SUBPLATE	
MANIFOLD FASTENERS				
REF.	PART NO.	QTY.	PART NAME	WHERE USED
A	F-HCF-08M020E	4	FLHC-10.9 M8 X 1.25 X 20 PLT	SECURES MANIFOLD TO MOUNTING PLATE
A	F-HNF-08ME	4	FLHN-10.9 M8 X 1.25 PLT	SECURES MANIFOLD TO MOUNTING PLATE
B	F-SHC-#10C52	4	SHCS 10-24 X 3-1/4	MANIFOLD ASM
B	F-LW-#10	4	LW #10	MANIFOLD ASM
C	F-HCF-10M025E	2	FLHC-10.9 M10 X 1.50 X 25 PLT	MANIFOLD ASM TO COMBINE
C	F-HNF-10ME	2	FLHN-10.9 M10 X 1.50 PLT	MANIFOLD ASM TO COMBINE
D	F-HCF-08M025E	2	FLHC-10.9 M8 X 1.25 X 25 PLT	MANIFOLD ASM TO COMBINE
D	F-HNF-08ME	2	FLHN-10.9 M8 X 1.25 PLT	MANIFOLD ASM TO COMBINE

Model 2810 Hillco Leveling System
For Serial Numbers 2810-1004 thru 2810-1011

HYDRAULIC HOSES

LEVELING AND TRIM				
REF.	PART NO.	QTY.	PART NAME	WHERE USED
NS	LA-140521	2	1/4" 100R2 HOSE 14" #6 FORS 90 X #6 FORS	INNER MAIN ROD TO COUNTERBALANCE VALVE PORT #3 (LEFT & RIGHT)
NS	LA-140531	1	1/2" 100R2 HOSE 104" #8 FORS 90 X #8 FORS STR.	LEVELING PORT "A" TO COUNTERBALANCE VALVE PORT #2 RIGHT
NS	LA-140541	1	1/2" 100R2 HOSE 184-1/2" #8 FORS 90 X #8 FORS STR.	LEVELING PORT "B" TO COUNTERBALANCE VALVE PORT #2 RIGHT
NS	LA-133631	2	1/2" 100R2 HOSE 82" #8 FORS X #8 FORS	OUTER MAIN ROD TO COUNTERBALANCE VALVE PORT #2 (LEFT & RIGHT)
NS	LA-140561	1	1/4" 100R2 HOSE 116" #6 FORS X #6 FORS	MASTER CYLINDER BASE TO SLAVE CYLINDER BASE
NS	LA-140571	1	1/4" 100R2 HOSE 138" #6 FORS X #6 FORS	MASTER CYLINDER ROD TO SLAVE CYLINDER ROD
NS	LA-140581	1	1/4" 100R2 HOSE 111" #6 FORS X #6 FORS	FIELD TRACKER "HEAD" PORT TO MASTER BASE
NS	LA-140591	1	1/4" 100R2 HOSE 104" #6 FORS X #6 FORS	FIELD TRACKER "ROD" PORT TO MASTER ROD
NS	HC-133541	2	ABRASION SLEEVE, NYLON -- 2.19 ID X 32 IN	HOSES TO TRIM VALVE AND SLAVE CYL
NS	LA-140491	1	1/4" 100R2 HOSE 35-1/2" #6 FORS X #4 FORS	LOAD SENSE LINE
NS	LA-140501	1	5/8" 100R2 HOSE 28" #10 FORS X #10 FORS	LEVELING VALVE PRESSURE HOSE
NS	LA-140511	1	5/8" 100R1 HOSE 26" #10 FORS X #10 FORS	LEVELING VALVE RETURN HOSE
GREASE				
NS	LA-140662	1	3/16 R1 GREASE HOSE 47" 1/8 MPT X 1/8 MPT	MAIN PIVOT PIN TO LH BULKHEAD BTM
NS	LA-141911	1	3/16 R1 GREASE HOSE 25" 1/8 MPT X 1/8 MPT	MASTER BASE TO RH BULKHEAD TOP
NS	LA-141921	1	3/16 R1 GREASE HOSE 70" 1/8 MPT X 1/8 MPT	MASTER ROD TO RH BULKHEAD BTM
BRAKE HOSES				
NS	LA-140602	2	1/4" TITFLEX HOSE 83 IN #3 MINV X #3 MINV WITH M10-1.0 X #3 FINV ADAPTER ON EACH END	LEFT & RIGHT BRAKE HOSES
HYDRO HOSES				
NS	LA-140551	2	1-1/4" 6000 PSI WP 82 IN W/ CODE 62 FLANGE STR. X CODE 62 FLANGE 90 DEG (S)	HYDROSTATIC HOSE EXTENSIONS

Model 2810 Hillco Leveling System
For Serial Numbers 2810-1004 thru 2810-1011

HYDRAULIC ADAPTERS

LEVELING AND TRIM MANIFOLDS				
REF.	PART NO.	QTY.	PART NAME	WHERE USED
NS	HA-M-6MF6FF	1	#6 ORS SWIVEL NUT RUN TEE	LOAD SENSE LINE ON COMBINE
NS	HA-M-16FF16MF	2	#16 ORS SWIVEL NUT RUN TEE	PRESSURE AND TANK LINES ON COMBINE
NS	HA-S-16FF10MF	2	#16 FORS X # 10 MORS REDUCER W/ NUT	PRESSURE AND TANK LINES ON COMBINE
NS	HA-S-4FP10MO	1	#10 MORB X #4 FPIPE STR.	PRESSURE GUAGE
NS	HA-L-4FP4MP	1	#4 PIPE 90 DEG STREET ELBOW	PRESSURE GUAGE
NS	HA-A-10MO	1	#10 MORB ALLEN HEAD PLUG	"T" PORT
NS	HA-L-10MF10MO	1	#10 MORS X #10 MORB 90 DEG	"T" PORT
NS	HA-S-10MF10MO	1	#10 MORS X #10 MORB STR.	"P" PORT
NS	HA-L-10FF10MF	1	#10 FORS X #10 MORS 90 DEG	"P" PORT
NS	HA-L-8MF8MO	1	#8 MORS X #8 MORB 90 DEG	"A" LEVELING PORT
NS	HA-L-8FF8MF	1	#8 MORS X #8 FORS 90 DEG	"B" LEVELING PORT
NS	HA-S-8MF8MO	1	#8 MORS X #8 MORB STR.	"B" LEVELING PORT
NS	HA-S-4MF4MO	1	#4 MORS X #4 MORB STR.	LOAD SENSE SHUTTLE
CASE FIELD TRACKER VALVE				
NS	HA-L-6FF6MF	2	#6 FORS X # 6 MORS 90 DEG	FIELD TRACKER VALVE
MAIN CYLINDER AND COUNTERBALANCE VALVE				
NS	HA-L-8MO8MO	2	#8 MORB X #8 MORB 90 DEG	LEFT AND RIGHT COUNTERBALANCE VALVE PORT #1 TO MAIN CYL BASE
NS	HA-L-8MF8MO	2	#8 MORS X #8 MORB 90 DEG	LEFT & RIGHT OUTER MAIN CYLINDER ROD
NS	HA-L-6MF8MO	2	#6 MORS X #8 MORS 90 DEG	LEFT & RIGHT INNER MAIN CYINDER ROD
NS	HA-T-8MF8MO	2	#8 MORS X #8 MORB STRAIGHT THREAD RUN TEE	LEFT & RIGHT COUNTERBALANCE VALVE PORT #2
NS	HA-L-6MF6MO	2	#6 MORS X # 6 MORB 90 DEG	LEFT & RIGHT COUNTERBALANCE VALVE PORT #3
NS	HC-141931	2	ZERK, GREASE 1/4-28 45 DEG	BASE END OF MAIN LEVELING CYLINDERS
NS	HA-L-8MO8MO	2	#8 MORB X #8 MORB 90 DEG	POCV #1 LEFT AND RIGHT LEV CYL BASE
MASTER AND SLAVE CYLINDERS				
NS	HA-Q-6MF6MO	2	#6MORS X #6MORB STRAIGHT THREAD BRANCH TEE	MASTER BASE AND ROD PORTS
NS	HA-L-6MF6MO	1	#6 MORS X #6 MORB 90 DEG	SLAVE ROD PORT
NS	HA-F-6MF6MO	1	#6 MORS X #6 MORB 45 DEG	SLAVE BASE PORT
NS	HC-135771	1	1/4-28 MALE X 1/8 FPT 90 DEG	BASE END OF MASTER CYLINDER
NS	HC-135881	1	1/4-28 MALE X 1/8 FPT STRAIGHT	ROD END OF MASTER CYLINDER
GREASE				
NS	HA-S-2FP2MN	3	1/8" NPSM X 1/8" FPT BULKHEAD CONNECTOR	GREASE BULKHEAD MOUNT
NS	HA-NJ-2FN	3	1/8 NPSM BULKHEAD LOCKNUT	BULKHEAD CONNECTORS
NS	HA-L-2FP2MP	1	1/8 MPT 90 STREET EL	MAIN PIVOT PIN
NS	HC-138011	1	ZERK, GREASE 1/4-28 STRAIGHT	MAIN PIVOT PIN
NS	HC-141231	1	ZERK, GREASE 1/8 MPT, 45 DEG	DROP AXLE PIVOT PIN

Model 2810 Hillco Leveling System
For Serial Numbers 2810-1004 thru 2810-1011

8 MISCELLANEOUS

DOCUMENTS AND LABELS				
REF.	PART NO.	QTY.	PART NAME	DESCRIPTION
NS	LL20-100773	2	DECAL, GRAY	HILLCO 2000 LEVELING SYSTEM
NS	LL20-100782	1	LABEL, SAFETY	CAUTION LEVELING SYSTEM CAB
NS	LL20-100783	6	DANGER, CRUSHING HAZARD	FRONT & REAR OF UC LEFT & RIGHT
NS	LL20-100784	2	DANGER PINCH POINT	RH & LH UPPER TRANS FACE PLT
NS	LL20-100785	1	LABEL, SAFETY	CAUTION MOVING STEP
NS	LL20-100786	1	WARNING, ELECTRONIC CRUSHING HAZARD	FRONT OF CONTROL BOX
NS	LL20-100787	2	LABEL, SAFETY	CAUTION LEVELING SYSTEM HAZARD
NS	LL20-100788	3	DANGER HYDRAULIC HAZARD	1- EA MAIN CYLINDER
NS	LL-133731	1	LABEL, GREASE 10 HRS	RH OVERCARRIAGE
NS	LL-133731	1	LABEL, GREASE 10 HRS	LH OVERCARRIAGE
NS	LL-133731	1	LABEL, GREASE 10 HRS	REAR AXLE
NS	LL-133731	1	LABEL, GREASE 10 HRS	TT PVT PIN
NS	LL-133731	1	LABEL, GREASE 10 HRS	RH TRANS SIDE PLT
NS	LL-133731	1	LABEL, GREASE 10 HRS	HDR LIFT CYL MNT (MAIN PVT PIN)
NS	LL-133731	2	LABEL, GREASE 10 HRS	MAIN LEV CYL BOTTOM (RH & LH)
NS	LL-133741	2	LABEL, GREASE 50 HRS	MAIN LEV CYL BOTTOM (RH & LH)
NS	LL-133741	1	LABEL, GREASE 50 HRS	BY BASE END OF SLAVE CYLINDER
NS	LL-133741	2	LABEL, GREASE 50 HRS	REAR FACE 12" ON BOTH SIDES OF PIVOT PIN
NS	LL-133741	2	LABEL, GREASE 50 HRS	RH AND LH BULKHEAD MOUNT
NS	LA-255951	1	PLATE, SERIAL NUMBER	LEFT REAR OF UNDERCARRIAGE
NS	D-050708ADL01A	1	MANUAL, PARTS	

Model 2810 Hillco Leveling System
For Serial Numbers 2810-1004 thru 2810-1011

9 PART NUMBER INDEX

PART NUMBER	PAGE NUMBER	PART NUMBER	PAGE NUMBER	PART NUMBER	PAGE NUMBER
CNH PART NUMBER: 336945	2-8	F-HCF-12M040E	2-6	HA-NJ-2FN	7-6
D-050708ADL01A	8-1	F-HCF-8M020E	5-2	HA-Q-6MF6MO	7-6
EC-100557	6-2	F-HN-#10C	6-2	HA-S-10MF10MO	7-6
EC-100692	6-2	F-HN5-12C	5-2	HA-S-16FF10MF	7-6
EC-136211	6-2	F-HNF-#10C	6-2	HA-S-2FP2MN	7-6
EC-136221	6-2	F-HNF-#6C	6-2	HA-S-4FP10MO	7-6
EC-138781	6-2	F-HNF-04C	6-2	HA-S-4MF4MO	7-6
EC-138791	6-2	F-HNF-08ME	3-4, 6-2, 7-4	HA-T-8MF8MO	7-6
EC-138801	6-2	F-HNF-08MF	2-6, 3-4, 5-2	HC-100706	2-2, 7-2
EC-140751	6-2	F-HNF-10ME	2-6, 7-4	HC-101021	7-4
EC-140761	6-2	F-HNF-10MF	2-6	HC-101022	7-4
EC-140771	6-2	F-HNF-12C	2-6	HC-101264	7-4
EC-140871	6-2	F-HNF-12ME	2-6	HC-101842	3-2, 7-2
EC-141741	6-4	F-HNF-12MF	3-4	HC-102082	7-4
EC-141751	6-4	F-HNF-20ME	2-6	HC-102218	3-2, 7-2
EC-141761	6-4	F-HNF-5MF	6-2	HC-133541	7-5
EC-141771	6-4	F-HNF-6MF	3-4	HC-134191	7-2
EC-141781	6-4	F-HNF-8MF	2-6, 3-4	HC-134201	7-2
EC-141791	6-4	F-HNJ-05C	5-2	HC-135221	7-2
EC-141801	6-4	F-HNJ-12MF	2-6	HC-135771	7-6
EC-141811	6-4	F-HNS-10ME	5-2	HC-135881	7-6
EC-141821	6-4	F-HNS-12ME	3-4, 5-2, 7-2	HC-138011	7-6
EC-141831	6-2	F-HNS-16ME	2-6, 3-4	HC-138861	7-4
EC-141891	6-2	F-LW-#10	7-4	HC-139151	3-2, 7-2
EC-141901	6-2	F-LW-04	6-2	HC-139161	7-2
EC-142101	3-4	F-LW-05	5-2	HC-139181	7-2
EC-142121	6-2	F-LW-12	5-2	HC-139451	3-2
F-CB-10M030F	2-6	F-LWE-05	6-2	HC-139461	3-4
F-CB-12C56	2-6	F-LWH-08	2-4	HC-140291	7-4
F-EYB-20M150E	2-6	F-MB-14NR40	2-6	HC-140361	7-2
F-FHS-8M016E	2-6	F-PCL-16X32	2-6	HC-140411	7-4
F-FWH-08	2-6	F-PCT-03X32	2-6	HC-140431	7-2
F-FWH-10	2-6	F-PHM-#10C16	6-2	HC-140441	7-2
F-HC-06M020F	3-4	F-PHM-#6C06	6-2	HC-140451	7-2
F-HC-08M025F	5-2	F-PHM-#6C12	6-2	HC-140461	3-2
F-HC-10M035F	5-2	F-PHM-04C24	6-2	HC-140641	3-2
F-HC-12M040E	3-4	F-PHM-04C36	6-2	HC-140651	3-2
F-HC-12M050F	5-2	F-PHM-4M030F	6-2	HC-141231	7-6
F-HC-12M060F	5-2	F-PHM-5M050F	6-2	HC-141931	7-6
F-HC-12M070E	7-2	F-PQR-08X32	2-6	HC-142731	7-4
F-HC-16M050E	2-6, 3-4	F-SHC-#10C52	7-4	HC-142761	7-4
F-HC-16M110E	2-6	F-SHC-20M060E	3-4	LA-133631	7-5
F-HC-16M120E	2-6	F-SHC-20M090E	3-4	LA-140421	7-2
F-HC-20M070E	3-4	F-SSS-04F04	7-2	LA-140491	7-5
F-HC-20M120	3-4	F-SSS-06C08	2-4	LA-140501	7-5
F-HC-20M280E	3-4	F-UDS-#7X06	3-4	LA-140511	7-5
F-HC-22M150E	2-8	HA-A-10MO	7-6	LA-140521	7-5
F-HC5-04C12	6-2	HA-F-6MF6MO	7-6	LA-140531	7-5
F-HC-6M090F	3-4	HA-L-10FF10MF	7-6	LA-140541	7-5
F-HC8-08F20	2-4	HA-L-10MF10MO	7-6	LA-140551	7-5
F-HC-8M025F	2-6	HA-L-2FP2MP	7-6	LA-140561	7-5
F-HC-8M040F	3-4	HA-L-4FP4MP	7-6	LA-140571	7-5
F-HCF-08M020E	3-4, 6-2, 7-4	HA-L-6FF6MF	7-6	LA-140581	7-5
F-HCF-08M025E	7-4	HA-L-6MF6MO	7-6	LA-140591	7-5
F-HCF-10M016F	2-6	HA-L-6MF8MO	7-6	LA-140602	7-5
F-HCF-10M020E	2-6, 3-4	HA-L-8FF8MF	7-6	LA-140662	7-5
F-HCF-10M025E	2-6	HA-L-8MF8MO	7-6	LA-141911	7-5
F-HCF-12M025F	3-4	HA-L-8MO8MO	7-6	LA-141921	7-5
F-HCF-12M030E	2-6	HA-M-16FF16MF	7-6	LA-229071	2-2, 3-2
F-HCF-12M030E	3-4	HA-M-6MF6FF	7-6	LA-230551	3-2

Model 2810 Hillco Leveling System
 For Serial Numbers 2810-1004 thru 2810-1011
PART NUMBER INDEX (CONTINUED)

PART NUMBER	PAGE NUMBER	PART NUMBER	PAGE NUMBER
LA-243691	2-2	LM-251001	2-2
LA-247481	3-2	LM-251641	6-2
LA-248861	5-2	LM-251771	2-2
LA-249062	6-4	LM-251791	2-2
LA-249102	6-4	LM-251861	3-2
LA-251321	2-2	LM-251871	3-2
LA-251471	3-2	LM-251881	2-2
LA-251481	3-2	LM-252231	2-8
LA-251491	3-2	LM-252262	5-2
LA-251512	2-2	LM-252272	5-2
LA-251531	3-2	LM-252611X	6-2
LA-251611	7-4	LM-252621	6-2
LA-251622	2-2	LM-253851	2-2
LA-251631	2-2	LM-253861	2-2
LA-251801	5-2	LM-255121	2-2
LA-251831	3-2	LM-255181	2-2
LA-252161	4-2	LM-255191	2-2
LA-252322	5-2	LM-255201	2-2
LA-252332	5-2	LM-255211	2-2
LA-252342	5-2	LM-255301	3-2
LA-253621	2-2	LM-255331	6-2
LA-253901	5-2	LM-255341	6-2
LA-253961	5-2	LP-213242	2-2
LA-254452	6-2	LP-249871	2-2
LA-254472	6-2	LP-251071	3-2
LA-255141	2-2	LP-251432	6-2
LA-255161	2-2	LP-251461	3-2
LA-255171	2-2	LP-251551	3-2
LA-255631	6-4	LP-251781	2-2
LA-255751	6-4	LP-252211	2-8
LA-255821	6-2, 6-4	LTP-241721	2-2
LA-255841	5-2	MC-100237	2-2
LA-255951	3-2, 8-1	MC-100548	2-2
LA-259661	6-2	MC-101339	2-2
LA-259671	6-2	MC-101838	2-2
LA-259821	2-2, 2-4	MC-134931	5-2
LL-133731	8-1	MC-134941	5-2
LL-133741	8-1	MC-135491	2-2
LL20-100773	8-1	MC-135511	2-2
LL20-100782	8-1	MC-136151	2-2
LL20-100783	8-1	MC-137251	3-2
LL20-100784	8-1	MC-137501	3-2
LL20-100785	8-1	MC-138641	3-2
LL20-100786	8-1	MC-138651	3-2
LL20-100787	8-1	MC-139251	5-2
LL20-100788	8-1	MC-139341	2-2
LM-212701	2-2	MC-139351	2-2
LM-226532	2-2, 2-4	MC-139361	2-2
LM-226841	2-2	MC-139371	2-2
LM-241122X	6-2	MC-140211	2-8
LM-244471	2-2, 2-4	MC-140231	2-8
LM-250092	7-4	MC-140791	4-2
LM-250641	2-2	MC-141941	2-8